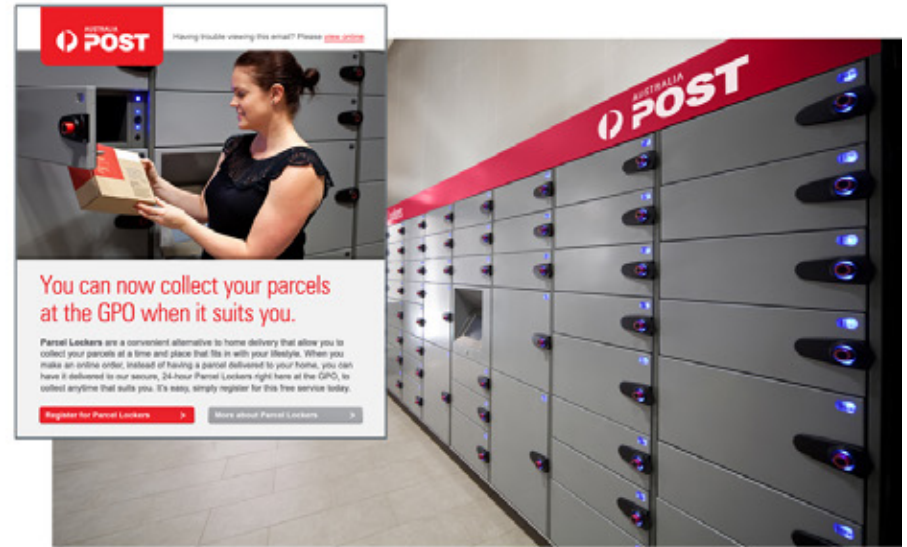


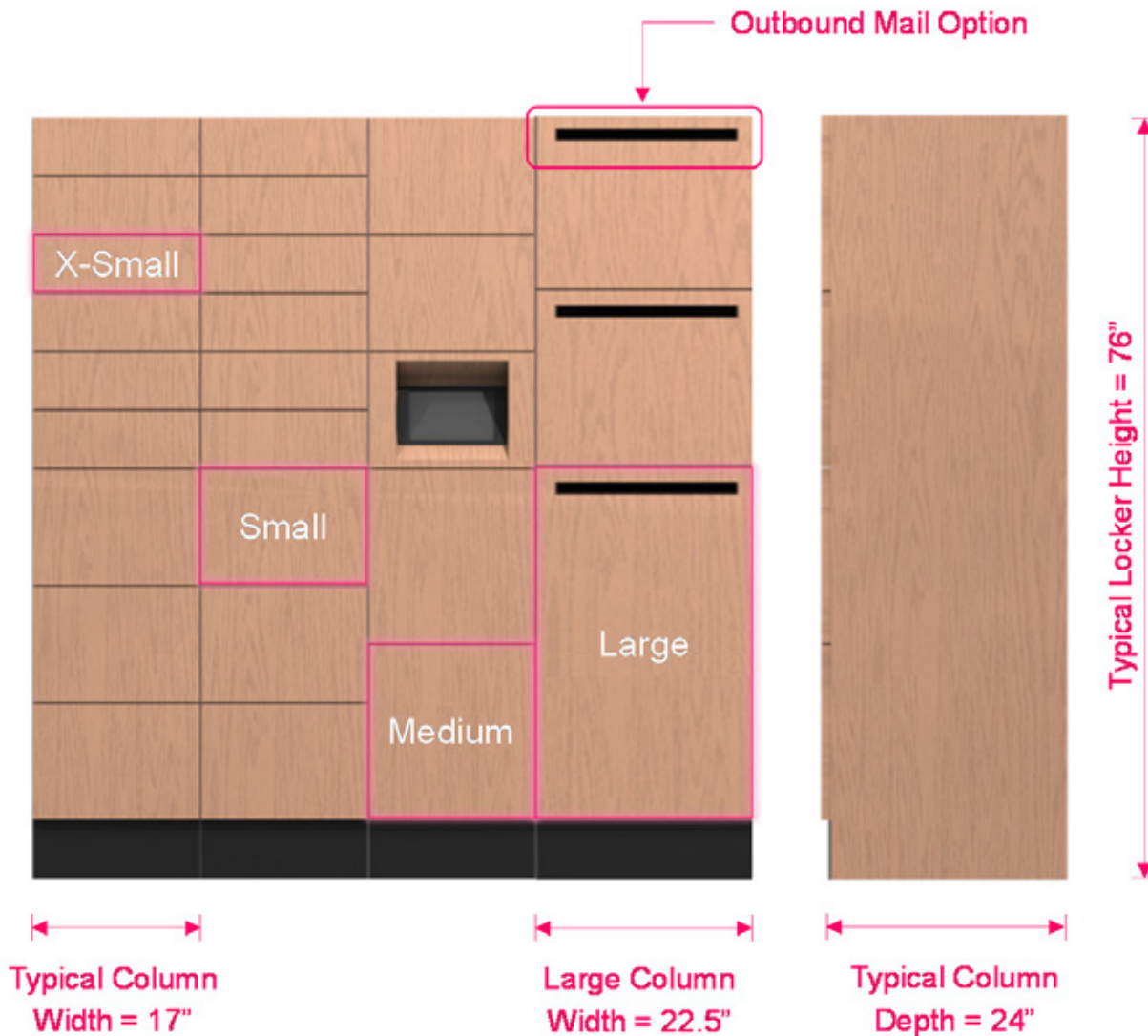
Millwork ... Metalwork

It's about the intelligence!



TYPICAL LOCKER CONFIGURATION:

Toll Free 1-800-803-1083



INTERNAL LOCKER DIMENSIONS:

Locker Size	Internal Locker Dimension			Max # Lockers per Column
	Height	Width	Depth	
X-Small	5"	13.5"	22.5"	12
Small	10"	13.5"	22.5"	6
Medium	16.25"	13.5"	22.5"	4
Large	33.25"	22.5"	22.5"	2

NOTES:

- Lockers are provided in a modular column format
- Locker Banks comprise multiple columns and one end panel.
- To calculate Locker Bank width, sum all column widths and add 0.75" for the end panel
- Outbound Mail option also available
- Locker Banks can be customized to order in millwork or metalwork finishes



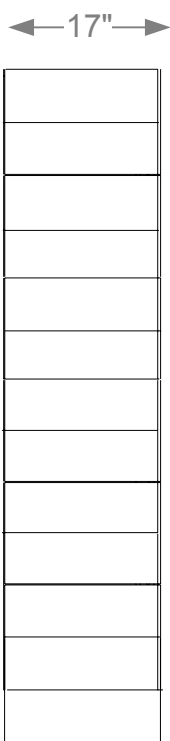
SOUTHWEST SOLUTIONS GROUP

business organization systems

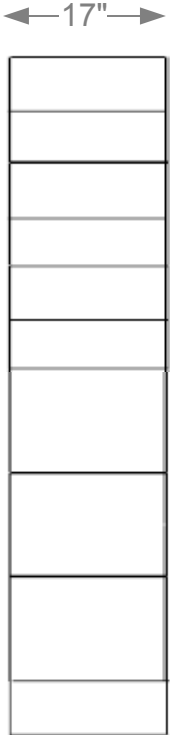
www.southwestsolutions.com

PAD LOCKER DIMENSIONS

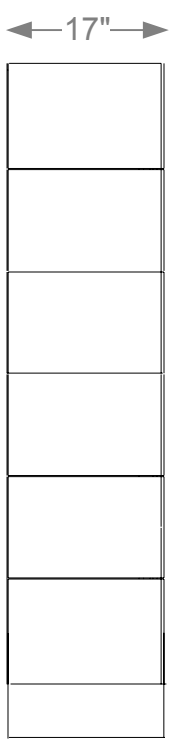
Toll Free 1-800-803-1083



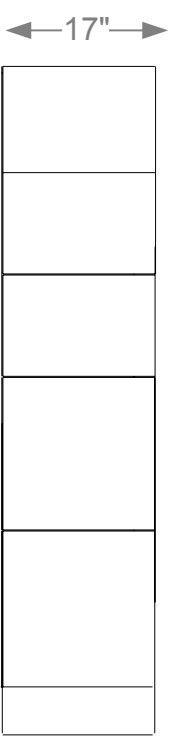
12 EXTRA-SMALL DOORS



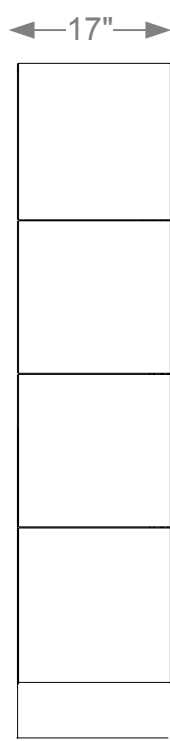
9 DOORS
(6 EXTRA-SMALL, 3 SMALL)



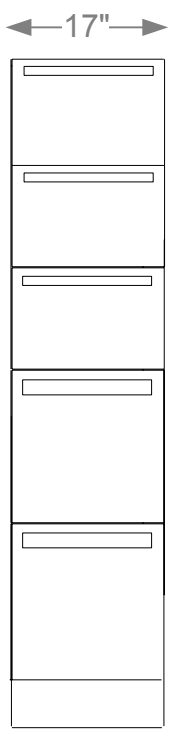
6 SMALL DOORS



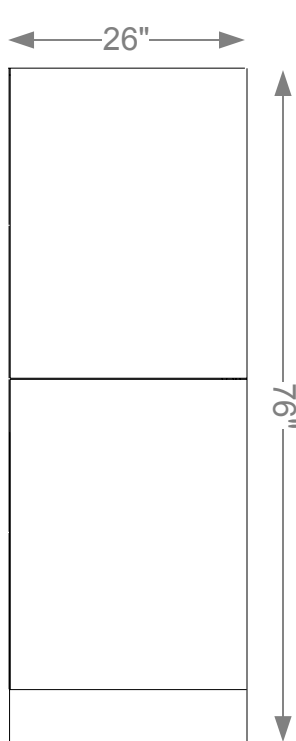
5 DOORS
(3 SMALL, 2 MEDIUM)



4 MEDIUM DOORS



5 DOORS
(3 SMALL, 2 MEDIUM)
OUTBOUND



2 LARGE DOORS

LOCKER INTERNAL DIMENSIONS:

- XS: 13.5" X 4.9"
- S: 13.5" X 10.5"
- M: 13.5" X 16.25"
- L: 22.5" X 33.25"

ALL LOCKERS INTERNAL DEPTH 22.5"

COLUMN EXTERNAL DIMENSIONS:

- ALL EXCEPT 2-DOOR: 17" WIDE
- 2-DOOR: 26" WIDE

- ALL 76" TALL
- ALL 24" DEEP

A LOCKER BANK CONSISTS OF MULTIPLE COLUMNS AND ONE END PANEL.
TO CALCULATE BANK WIDTH, INCLUDE ALL COLUMN WIDTHS PLUS 0.75" FOR END PANEL.

NOT TO SCALE