



SOUTHWEST**SOLUTIONS**GROUP

business organization systems

STORAGE AND TRANSPORT SOLUTIONS FOR THE HEALTHCARE MARKET

www.southwestsolutions.com

Toll Free 1-800-803-1083

Technibilt and its family of companies have been in the healthcare storage and transport equipment business for over 20 years, with more than 40 years combined experience in the field.

TABLE OF CONTENTS

SHELVING UNITS

pages 3 - 15

BASKET BULK STORAGE:

pages 16 - 17

SLOPED SHELF STORAGE CARTS

pages 18 - 19

BIN CARTS STORAGE:

pages 20

SECURITY CAGES:

pages 21 - 22

STORAGE, APPAREL WORKSTATION CARTS:

pages 23 - 24

UTILITY, TRANSPORT SUPPLY CARTS:

pages 25 - 26

CART COVER & ACCESSORIES:

pages 27 - 33

TSS HD SYSTEM:

pages 34 - 35

We are committed to providing customers with the highest quality products and understand that our customers are the driving force behind our business. We strive to provide not only the best products but also the best customer service. Our 1-2 day turnaround on shipments ARO and less than 24 hour response time to RFQ's, is a testament to our customer focused beliefs. Our quality program consists of a team of experienced people who work together to make sure that the end product meets and even exceeds the requirements of our customers. ***Our team constantly works to supply our customers with an improved product, that's built to last, while meeting the stringent needs of today's healthcare facility.***

In addition, we believe hospitals never have enough of three main resources...time, money and space. By offering creative storage and distribution solutions for our customers, we can reduce capital expenditures, maximize available space and lessen non-value added movement of people and equipment. ***Whatever storage challenges lie ahead, our goal is to streamline the process from planning to purchasing and installation.***

Whether it's one cart or a new hospital construction project, contact us today to further discuss your storage and space management needs. Afterall, it's most likely time for a ***CHANGE OF SPACE!***

IS RECOGNIZED FOR QUALITY AND HIGH STRENGTH. ALL WELDED CONSTRUCTION AND TRUSS CONFIGURATION ADDS SIGNIFICANT STRENGTH CHARACTERISTICS TO EACH SHELF SIZE.

- + No tool assembly is required with our Split Conical Adapters
- + Posts are numbered for quick field assembly
- + Durable finishes and a complete line of accessories complement any application

NO TOOL ASSEMBLY

The Assembly process is simplified with the Split Conical Adapters which snap into the grooves on the post. The shelf slips over the top surface securing the shelf and adapter to the post. 4 corner adapters are included with each shelf.

CAPACITIES

Weight Capacities Per Shelf (Evenly Distributed)

<u>Length</u>	<u>Capacity</u>
24" - 48"	850 Lbs.
54"	800 Lbs.
60"	750 Lbs.
72"	700 Lbs.

FINISHES

Chrome Plus (CH) - Our answer to high visibility and dry storage areas. The heavy nickel plate process features a hard chromium finish with special brighteners to enhance and increase the life of the shelving. This finish is a replacement for zinc and standard chrome products. (1 year warranty against rust - pro-rated)



Duro Seal (PW) - The process provides a metalized zinc chromate plating with a special formulated hard hybrid silver/gray finish which is bonded to the plated metal surface. Duro Seal can be used in high humidity storage applications such as walk-in coolers and freezers. (16 year warranty against rust - pro-rated)

WIRE STORAGE vs. PLASTIC BIN STORAGE

Over the last 10 years plastic bin storage has become increasingly popular, with a wide range of options to choose from. These items may be suitable for a few applications, but leading hospitals around the country are opting for a superior, wire based storage system. The reasons are many, but the main concerns are addressed below.

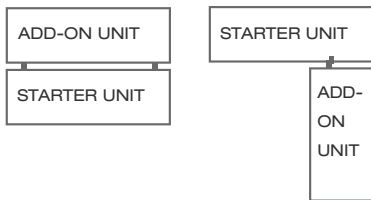
- 1. DUST COLLECTION** Plastic is a magnet for dust! The accumulation of dust, leads to poor aseptic practices and increases the likelihood of Hospital Acquired Infections. A major concern with today's healthcare professional.
- 2. FIXED SPACES / LOST SPACE** Plastic bins are fixed spaces. Even if products fit perfectly in a plastic bin, there is still lost space between the bins. Wire storage is 100% adjustable and provides the end user with the flexibility to adapt their storage.
- 3. DURABILITY** Plastic deteriorates over time and becomes brittle and greasy. TSS wire storage is metal and with proper care, can last for decades.
- 4. LIGHT PENETRATION** Plastic bins are solid; not only do they occlude light, but they also impede efficiency.

63" Height



W x L x H	Starter Wt.(lbs)	Add-On Wt.(lbs)	Chrome Plus Starter	Duro Seal Starter	Chrome Plus Add-on	Duro-Seal Add-On
18" x 24" x 63"	42	35	816CH	816PW	A816CH	A816PW
18" x 30" x 63"	47	40	826CH	826PW	A826CH	A826PW
18" x 36" x 63"	53	46	836CH	836PW	A836CH	A836PW
18" x 42" x 63"	57	50	846CH	846PW	A846CH	A846PW
18" x 48" x 63"	63	56	856CH	856PW	A856CH	A856PW
18" x 60" x 63"	82	75	866CH	866PW	A866CH	A866PW
18" x 72" x 63"	94	89	876CH	876PW	A876CH	A876PW
21" x 24" x 63"	46	39	116CH	116PW	A116CH	A116PW
21" x 30" x 63"	52	45	126CH	126PW	A126CH	A126PW
21" x 36" x 63"	59	52	136CH	136PW	A136CH	A136PW
21" x 42" x 63"	65	58	146CH	146PW	A146CH	A146PW
21" x 48" x 63"	71	64	156CH	156PW	A156CH	A156PW
21" x 60" x 63"	88	81	166CH	166PW	A166CH	A166PW
21" x 72" x 63"	98	92	176CH	176PW	A176CH	A176PW
24" x 24" x 63"	50	43	416CH	416PW	A416CH	A416PW
24" x 30" x 63"	57	50	426CH	426PW	A426CH	A426PW
24" x 36" x 63"	65	58	436CH	436PW	A436CH	A436PW
24" x 42" x 63"	72	65	446CH	446PW	A446CH	A446PW
24" x 48" x 63"	79	72	456CH	456PW	A456CH	A456PW
24" x 60" x 63"	98	91	466CH	466PW	A466CH	A466PW
24" x 72" x 63"	120	113	476CH	476PW	A476CH	A476PW

ADD ON OPTIONS



EASY ASSEMBLY & ADJUSTMENTS



1. Snap plastic sleeve around post



2. Slide shelf over sleeve for secure locking



3. Two "S-Hooks" per shelf are required to connect add-on units to starter units

74" Height

W x L x H	Starter Wt.(lbs)	Add-On Wt.(lbs)	Chrome Plus Starter	Duro Seal Starter	Chrome Plus Add-on	Duro-Seal Add-On
18" x 24" x 74"	44	36	817CH	817PW	A817CH	A817PW
18" x 30" x 74"	50	42	827CH	827PW	A827CH	A827PW
18" x 36" x 74"	56	48	837CH	837W	A837CH	A837PW
18" x 42" x 74"	64	51	847CH	847PW	A847CH	A847PW
18" x 48" x 74"	66	53	857CH	857PW	A857CH	A857PW
18" x 60" x 74"	85	76	867CH	867PW	A867CH	A867PW
18" x 72" x 74"	97	88	877CH	877PW	A877CH	A877PW
21" x 24" x 74"	49	40	117CH	117PW	A117CH	A117PW
21" x 30" x 74"	55	47	127CH	127PW	A127CH	A127PW
21" x 36" x 74"	62	54	137CH	137PW	A137CH	A137PW
21" x 42" x 74"	69	61	147CH	147PW	A147CH	A147PW
21" x 48" x 74"	74	66	157CH	157PW	A157CH	A157PW
21" x 60" x 74"	91	83	167CH	167PW	A167CH	A167PW
21" x 72" x 74"	98	89	177CH	177PW	A177CH	A177PW
24" x 24" x 74"	53	44	417CH	417PW	A417CH	A417PW
24" x 30" x 74"	60	51	427CH	427PW	A427CH	A427PW
24" x 36" x 74"	68	60	437CH	437PW	A437CH	A437PW
24" x 42" x 74"	74	66	447CH	447PW	A447CH	A447PW
24" x 48" x 74"	88	74	457CH	457PW	A457CH	A457PW
24" x 60" x 74"	101	92	467CH	467PW	A467CH	A467PW
24" x 72" x 74"	123	115	477CH	477PW	A477CH	A477PW

74" Height

W x L x H	Starter Wt. (lbs)	Add-On Wt. (lbs)	Chrome Plus Starter	Duro Seal Starter	Chrome Plus Add-on	Duro-Seal Add-On
18" x 24" x 74"	42	35	815CH	815PW	A815CH	A815PW
18" x 30" x 74"	47	40	825CH	825PW	A825CH	A825PW
18" x 36" x 74"	53	46	835CH	835PW	A835CH	A835PW
18" x 42" x 74"	57	50	845CH	845PW	A845CH	A845PW
18" x 48" x 74"	63	56	855CH	855PW	A855CH	A855PW
18" x 60" x 74"	82	75	865CH	865PW	A865CH	A865PW
18" x 72" x 74"	94	89	875CH	875PW	A875CH	A875PW
21" x 24" x 74"	46	39	115CH	115PW	A115CH	A115PW
21" x 30" x 74"	52	45	125CH	125PW	A125CH	A125PW
21" x 36" x 74"	59	52	135CH	135PW	A135CH	A135PW
21" x 42" x 74"	65	58	145CH	145PW	A145CH	A145PW
21" x 48" x 74"	71	64	155CH	155PW	A155CH	A155PW
21" x 60" x 74"	88	81	165CH	165PW	A165CH	A165PW
21" x 72" x 74"	98	92	175CH	175PW	A175CH	A175PW
24" x 24" x 74"	50	43	415CH	415PW	A415CH	A415PW
24" x 30" x 74"	57	50	425CH	425PW	A425CH	A425PW
24" x 36" x 74"	65	58	435CH	435PW	A435CH	A435PW
24" x 42" x 74"	72	65	445CH	445PW	A445CH	A445PW
24" x 48" x 74"	79	72	455CH	455PW	A455CH	A455PW
24" x 60" x 74"	98	91	465CH	465PW	A465CH	A465PW
24" x 72" x 74"	120	113	475CH	475PW	A475CH	A475PW



86" Height

W x L x H	Starter Wt. (lbs)	Add-On Wt. (lbs)	Chrome Plus Starter	Duro Seal Starter	Chrome Plus Add-on	Duro-Seal Add-On
18" x 24" x 86"	55	45	818CH	818PW	A818CH	A818PW
18" x 30" x 86"	62	52	828CH	828PW	A828CH	A828PW
18" x 36" x 86"	69	59	838CH	838PW	A838CH	A838PW
18" x 42" x 86"	74	64	848CH	848PW	A848CH	A848PW
18" x 48" x 86"	88	72	858CH	858PW	A858CH	A858PW
18" x 60" x 86"	106	95	868CH	868PW	A868CH	A868PW
18" x 72" x 86"	121	110	878CH	878PW	A878CH	A878PW
21" x 24" x 86"	61	50	118CH	118PW	A118CH	A118PW
21" x 30" x 86"	68	58	128CH	128PW	A128CH	A128PW
21" x 36" x 86"	77	67	138CH	138PW	A138CH	A138PW
21" x 42" x 86"	85	75	148CH	148PW	A148CH	A148PW
21" x 48" x 86"	92	82	158CH	158PW	A158CH	A158PW
21" x 60" x 86"	113	103	168CH	168PW	A168CH	A168PW
21" x 72" x 86"	126	115	178CH	178PW	A178CH	A178PW
24" x 24" x 86"	66	55	418CH	418PW	A418CH	A418PW
24" x 30" x 86"	75	64	428CH	428PW	A428CH	A428PW
24" x 36" x 86"	85	75	438CH	438PW	A438CH	A438PW
24" x 42" x 86"	93	83	448CH	448PW	A448CH	A448PW
24" x 48" x 86"	102	92	458CH	458PW	A458CH	A458PW
24" x 60" x 86"	126	115	468CH	468PW	A468CH	A468PW
24" x 72" x 86"	153	143	478CH	478PW	A478CH	A478PW

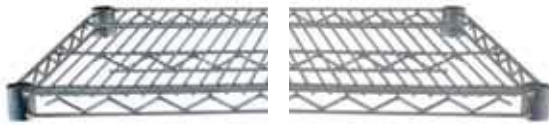
CHROME FINISH



DURO-SEAL FINISH



STANDARD SHELVES AND POST



W x L	Wt (lbs.)	Chrome Plus	Duro-Seal
-------	-----------	-------------	-----------

14" x 24"	6	1424CH	1424PW
14" x 30"	7	1430CH	1430PW
14" x 36"	8	1436CH	1436PW
14" x 42"	10	1442CH	1442PW
14" x 48"	11	1448CH	1448PW
14" x 54"	12	1454CH	1454PW
14" x 60"	14	1460CH	1460PW
14" x 72"	17	1472CH	1472PW
18" x 24"	7	1824CH	1824PW
18" x 30"	8	1830CH	1830PW
18" x 36"	10	1836CH	1836PW
18" x 42"	11	1842CH	1842PW
18" x 48"	14	1848CH	1848PW
18" x 54"	15	1854CH	1854PW
18" x 60"	17	1860CH	1860PW
18" x 72"	20	1872CH	1872PW
21" x 24"	8	2124CH	2124PW
21" x 30"	9	2130CH	2130PW
21" x 36"	11	2136CH	2136PW
21" x 42"	12	2142CH	2142PW
21" x 48"	14	2148CH	2148PW
21" x 54"	16	2154CH	2154PW
21" x 60"	18	2160CH	2160PW
21" x 72"	24	2172CH	2172PW
24" x 24"	9	2424CH	2424PW
24" x 30"	11	2430CH	2430PW
24" x 36"	13	2436CH	2436PW
24" x 42"	15	2442CH	2442PW
24" x 48"	16	2448CH	2448PW
24" x 54"	18	2454CH	2454PW
24" x 60"	21	2460CH	2460PW
24" x 72"	26	2472CH	2472PW
30" x 48"	22	3048CH	
30" x 60"	27	3060CH	



SUTURE SHELF

Gravity feed shelves increase functionality in the stocking process. Dividers can also be added to separate mixed shelf contents.

SL1824CH	18" x 24"	7
SL1836CH	18" x 36"	10
SL1848CH	18" x 48"	13

CHROME STANDARD POST



DURO-SEAL STANDARD POST



W x L	Wt (lbs.)	Chrome Plus	Duro-Seal
-------	-----------	-------------	-----------

14"	1	P14CH	P14PW
27"	1.5	P27CH	P27PW
34"	2	P34CH	P34PW
43"	3	P43CH	P43PW
54"	3.5	P54CH	P54PW
63"	4	P63CH	P63PW
74"	4.5	P74CH	P74PW
86"	5.5	P86CH	P86PW

*Note - Special post lengths are available. They will be priced at the next higher length and will include an additional \$2.00 cut charge. Posts can also be adjointed together with a TRBCON (page 33) for lengths higher than 86". Posts higher than 86" should not be used with shelves less than 24" deep.



SOLID SHELF

SLD1836GV	18 x 36 Galvanized Shelf	16
SLD1848GV	18 x 48 Galvanized Shelf	20
SLD1860GV	18 x 60 Galvanized Shelf	24
SLD2436GV	24 x 36 Galvanized Shelf	19
SLD2448GV	24 x 48 Galvanized Shelf	24
SLD2460GV	24 x 60 Galvanized Shelf	31
SLD2460SS	24 x 60 Stainless Steel Shelf	31



BASKET SHELF / IV SOLUTION SHELF

Shallow front opening allows for easy access to items. Dividers can be added (adjust horizontally) to house various sizes of IV solution bags and other materials.

BSK1824CH	18" X 24"	10
BSK1836CH	18" x 36"	15
BSK1848CH	18" x 48"	20
BSK1860CH	18" x 60"	25



DOUBLE SUTURE SHELF

STR24	24" X 24"	5
STR36	24" X 36"	7
STR48	24" X 48"	9

MB SERIES

Standard Units Include:

- + 4 or 5 Wire shelves and split sleeve adapters.
- + 4 Posts – available in 63" or 74".
- + 5" Non-marking swivel caster, 2 with total lock brakes.
- + 4 Donut bumpers to prevent damage to walls and other equipment.
- + Load capacity up to 1,200 lbs.

See pages 28 - 33 for a full line of accessories.

Additional Shelves page 6

**4 SHELF**

PART #	DIMENSIONS	WEIGHT (lbs)
MB836CH	18" x 36" x 69"	66
MB856CH	18" x 48" x 69"	76
MB866CH	18" x 60" x 69"	95
MB436CH	24" x 36" x 69"	78
MB456CH	24" x 48" x 69"	98
MB466CH	24" x 60" x 69"	111
MB837CH	18" x 36" x 80"	63
MB857CH	18" x 48" x 80"	73
MB867CH	18" x 60" x 80"	92
MB437CH	24" x 36" x 80"	75
MB457CH	24" x 48" x 80"	89
MB467CH	24" x 60" x 80"	108

5 SHELF

PART #	DIMENSIONS	WEIGHT (lbs)
MB836CH-5	18" x 36" x 69"	73
MB856CH-5	18" x 48" x 69"	85
MB866CH-5	18" x 60" x 69"	109
MB436CH-5	24" x 36" x 69"	88
MB456CH-5	24" x 48" x 69"	105
MB466CH-5	24" x 60" x 69"	129
MB835CH	18" x 36" x 80"	75
MB855CH	18" x 48" x 80"	88
MB865CH	18" x 60" x 80"	112
MB435CH	24" x 36" x 80"	91
MB455CH	24" x 48" x 80"	108
MB465CH	24" x 60" x 80"	132

ME SERIES



Standard Units Include:

- + 4 or 5 Wire shelves and split sleeve adapters.
- + 4 Posts – available in 63” or 74”.
- + 2 End screens and 1 back screen with screen clips.
- + 5” Non-marking swivel Caster, 2 with total lock brakes.
- + 4 Donut bumpers to prevent damage to walls and other equipment.
- + Load Capacity up to 1,200 lbs.

See pages 28 - 33 for a full line of accessories.

Additional Shelves page 6

4 SHELF

PART #	DIMENSIONS	WEIGHT (lbs)
ME836CH	18” X 36” X 69”	90
ME856CH	18” X 48” X 69”	104
ME866CH	18” X 60” X 69”	130
ME436CH	24” X 36” X 69”	108
ME456CH	24” X 48” X 69”	124
ME466CH	24” X 60” X 69”	150
ME837CH	18” X 36” X 80”	106
ME857CH	18” X 48” X 80”	124
ME867CH	18” X 60” X 80”	150
ME437CH	24” X 36” X 80”	126
ME457CH	24” X 48” X 80”	154
ME467CH	24” X 60” X 80”	174

5 SHELF

PART #	DIMENSIONS	WEIGHT (lbs)
ME836CH-5	18” X 36” X 69”	100
ME856CH-5	18” X 48” X 69”	116
ME866CH-5	18” X 60” X 69”	147
ME436CH-5	24” X 36” X 69”	121
ME456CH-5	24” X 48” X 69”	140
ME466CH-5	24” X 60” X 69”	171
ME835CH	18” X 36” X 80”	115
ME855CH	18” X 48” X 80”	136
ME865CH	18” X 60” X 80”	167
ME435CH	24” X 36” X 80”	139
ME455CH	24” X 48” X 80”	164
ME465CH	24” X 60” X 80”	195

MD SERIES

Standard Units Include:

- + 4 or 5 Wire shelves and split sleeve adapters.
- + 4 Posts – available in 63” or 74”.
- + Dolly base for added strength and stability(includes corner bumpers).
- + 5” Non-marking swivel caster, 2 with total lock brakes (larger casters available).
- + Load capacity up to 2,000 lbs.

See pages 28 - 33 for a full line of accessories.

Additional Shelves page 6



4 SHELF

PART #	DIMENSIONS	WEIGHT (lbs)
MD836CH	18" X 36" X 70"	73
MD856CH	18" X 48" X 70"	85
MD866CH	18" X 60" X 70"	106
MD436CH	24" X 36" X 70"	88
MD456CH	24" X 48" X 70"	104
MD466CH	24" X 60" X 70"	126
MD837CH	18" X 36" X 81"	85
MD857CH	18" X 48" X 81"	100
MD867CH	18" X 60" X 81"	126
MD437CH	24" X 36" X 81"	104
MD457CH	24" X 48" X 81"	123
MD467CH	24" X 60" X 81"	150

5 SHELF

PART #	DIMENSIONS	WEIGHT (lbs)
MD836CH-5	18" X 36" X 70"	83
MD856CH-5	18" X 48" X 70"	97
MD866CH-5	18" X 60" X 70"	123
MD436CH-5	24" X 36" X 70"	101
MD456CH-5	24" X 48" X 70"	120
MD466CH-5	24" X 60" X 70"	147
MD835CH	18" X 36" X 81"	85
MD855CH	18" X 48" X 81"	100
MD865CH	18" X 60" X 81"	126
MD435CH	24" X 36" X 81"	104
MD455CH	24" X 48" X 81"	123
MD465CH	24" X 60" X 81"	150

MED SERIES



Standard Units Include:

- + 4 or 5 Wire shelves and split sleeve adapters.
- + 4 Posts – available in 63" or 74".
- + Dolly base for added strength and stability(includes corner bumpers).
- + 2 End screens and 1 back screen with screen clips.
- + 5" Non-marking swivel caster, 2 with total lock brakes(larger casters available).
- + Load capacity up to 2,000 lbs.

See pages 28 - 33 for a full line of accessories.

Additional Shelves page 6

4 SHELF

PART #	DIMENSIONS	WEIGHT (lbs)
MED836CH	18" X 36" X 70"	100
MED856CH	18" X 48" X 70"	116
MED866CH	18" X 60" X 70"	144
MED436CH	24" X 36" X 70"	121
MED456CH	24" X 48" X 70"	139
MED466CH	24" X 60" X 70"	168
MED837CH	18" X 36" X 81"	116
MED857CH	18" X 48" X 81"	136
MED867CH	18" X 60" X 81"	164
MED437CH	24" X 36" X 81"	139
MED457CH	24" X 48" X 81"	169
MED467CH	24" X 60" X 81"	192

5 SHELF

PART #	DIMENSIONS	WEIGHT (lbs)
MED836CH-5	18" X 36" X 70"	110
MED856CH-5	18" X 48" X 70"	128
MED866CH-5	18" X 60" X 70"	161
MED436CH-5	24" X 36" X 70"	134
MED456CH-5	24" X 48" X 70"	155
MED466CH-5	24" X 60" X 70"	189
MED835CH	18" X 36" X 81"	125
MED855CH	18" X 48" X 81"	148
MED865CH	18" X 60" X 81"	181
MED435CH	24" X 36" X 81"	152
MED455CH	24" X 48" X 81"	179
MED465CH	24" X 60" X 81"	213

M-SD SERIES

Standard Units Include:

- + 3 or 4 Wire shelves, 1 solid bottom shelf and Split Sleeve Adapters.
 - + 4 Posts – available in 63” or 74”.
 - + 5” Non-marking swivel caster, 2 with total lock brakes.
 - + 4 Donut bumpers to prevent damage to walls and other equipment.
 - + Load capacity up to 1,200 lbs.
- See pages 28 - 33 for a full line of accessories.
- Additional Shelves page 6



4 SHELF

PART #	DIMENSIONS	WEIGHT (lbs)
M-SD836CH	18" X 36" X 69"	67
M-SD856CH	18" X 48" X 69"	77
M-SD866CH	18" X 60" X 69"	96
M-SD436CH	24" X 36" X 69"	79
M-SD456CH	24" X 48" X 69"	93
M-SD466CH	24" X 60" X 69"	112
M-SD837CH	18" X 36" X 80"	70
M-SD857CH	18" X 48" X 80"	80
M-SD867CH	18" X 60" X 80"	99
M-SD437CH	24" X 36" X 80"	82
M-SD457CH	24" X 48" X 80"	102
M-SD467CH	24" X 60" X 80"	115

5 SHELF

PART #	DIMENSIONS	WEIGHT (lbs)
M-SD836CH-5	18" X 36" X 69"	77
M-SD856CH-5	18" X 48" X 69"	89
M-SD866CH-5	18" X 60" X 69"	113
M-SD436CH-5	24" X 36" X 69"	92
M-SD456CH-5	24" X 48" X 69"	109
M-SD466CH-5	24" X 60" X 69"	133
M-SD835CH	18" X 36" X 80"	79
M-SD855CH	18" X 48" X 80"	92
M-SD865CH	18" X 60" X 80"	116
M-SD435CH	24" X 36" X 80"	95
M-SD455CH	24" X 48" X 80"	112
M-SD465CH	24" X 60" X 80"	136

ME-SD SERIES



Standard Units Include:

- + 3 or 4 Wire shelves, 1 solid bottom shelf and Split Sleeve Adapters.
- + 4 Posts – available in 63” or 74”.
- + 2 End screens and 1 back screen with screen clips.
- + 5” Non-marking swivel caster, 2 with total lock brakes.
- + 4 Donut bumpers to prevent damage to walls and other equipment.
- + Load capacity up to 1,200 lbs.

See pages 28 - 33 for a full line of accessories.

Additional Shelves page 6

4 SHELF

PART #	DIMENSIONS	WEIGHT (lbs)
ME-SD836CH	18" X 36" X 69"	96
ME-SD856CH	18" X 48" X 69"	112
ME-SD866CH	18" X 60" X 69"	137
ME-SD436CH	24" X 36" X 69"	114
ME-SD456CH	24" X 48" X 69"	132
ME-SD466CH	24" X 60" X 69"	160
ME-SD837CH	18" X 36" X 80"	112
ME-SD857CH	18" X 48" X 80"	132
ME-SD867CH	18" X 60" X 80"	157
ME-SD437CH	24" X 36" X 80"	132
ME-SD457CH	24" X 48" X 80"	162
ME-SD467CH	24" X 60" X 80"	184

5 SHELF

PART #	DIMENSIONS	WEIGHT (lbs)
ME-SD836CH-5	18" X 36" X 69"	106
ME-SD856CH-5	18" X 48" X 69"	124
ME-SD866CH-5	18" X 60" X 69"	154
ME-SD436CH-5	24" X 36" X 69"	127
ME-SD456CH-5	24" X 48" X 69"	148
ME-SD466CH-5	24" X 60" X 69"	181
ME-SD835CH	18" X 36" X 80"	121
ME-SD855CH	18" X 48" X 80"	144
ME-SD865CH	18" X 60" X 80"	174
ME-SD435CH	24" X 36" X 80"	145
ME-SD455CH	24" X 48" X 80"	172
ME-SD465CH	24" X 60" X 80"	205

MED-SD SERIES

Standard Units Include:

- + 3 or 4 Wire shelves, 1 solid bottom shelf and Split Sleeve Adapters.
- + 4 Posts – available in 63” or 74”.
- + 2 End screens and 1 back screen with screen clips.
- + Dolly base for added strength and stability(includes corner bumpers).
- + 5” Non-marking swivel caster, 2 with total lock brakes(larger casters available).
- + Load capacity up to 2,000 lbs.

See pages 28 - 33 for a full line of accessories.

Additional Shelves page 6



4 SHELF

PART #	DIMENSIONS	WEIGHT (lbs)
MED-SD836CH	18" X 36" X 70"	106
MED-SD856CH	18" X 48" X 70"	124
MED-SD866CH	18" X 60" X 70"	151
MED-SD436CH	24" X 36" X 70"	127
MED-SD456CH	24" X 48" X 70"	147
MED-SD466CH	24" X 60" X 70"	178
MED-SD837CH	18" X 36" X 81"	122
MED-SD857CH	18" X 48" X 81"	144
MED-SD867CH	18" X 60" X 81"	171
MED-SD437CH	24" X 36" X 81"	145
MED-SD457CH	24" X 48" X 81"	177
MED-SD467CH	24" X 60" X 81"	202

5 SHELF

PART #	DIMENSIONS	WEIGHT (lbs)
MED-SD836CH-5	18" X 36" X 70"	116
MED-SD856CH-5	18" X 48" X 70"	136
MED-SD866CH-5	18" X 60" X 70"	168
MED-SD436CH-5	24" X 36" X 70"	140
MED-SD456CH-5	24" X 48" X 70"	163
MED-SD466CH-5	24" X 60" X 70"	199
MED-SD835CH	18" X 36" X 81"	131
MED-SD855CH	18" X 48" X 81"	156
MED-SD865CH	18" X 60" X 81"	188
MED-SD435CH	24" X 36" X 81"	158
MED-SD455CH	24" X 48" X 81"	187
MED-SD465CH	24" X 60" X 81"	223

SOLID SHELVING



Solid Shelving is used when containment issues are present. The raised “marine” edge on all four sides and at the corners contains spills and minimizes contamination to lower storage levels. This raised “marine” edge with two-fold thickness, also provide additional rigidity to the shelving unit. Additional shelves may be purchased separately on page 6.

Standard Units Include:

- + 4 or 5 Solid galvanized shelves.
- + 4 Posts – available in 63” or 74”.

Leveling Bolts to adjust for uneven surfaces

See pages 28 - 33 for a full line of accessories.

Additional Shelves page 6

4 SHELF

PART #	DIMENSIONS	WEIGHT (lbs)
836SLD	18” X 36” X 69”	78
856SLD	18” X 48” X 69”	94
866SLD	18” X 60” X 69”	110
436SLD	24” X 36” X 69”	90
456SLD	24” X 48” X 69”	110
466SLD	24” X 60” X 69”	138
837SLD	18” X 36” X 80”	80
857SLD	18” X 48” X 80”	96
867SLD	18” X 60” X 80”	112
437SLD	24” X 36” X 80”	92
457SLD	24” X 48” X 80”	112
467SLD	24” X 60” X 80”	140

5 SHELF

PART #	DIMENSIONS	WEIGHT (lbs)
836SLD-5	18” X 36” X 69”	94
856SLD-5	18” X 48” X 69”	114
866SLD-5	18” X 60” X 69”	134
436SLD-5	24” X 36” X 69”	109
456SLD-5	24” X 48” X 69”	134
466SLD-5	24” X 60” X 69”	169
835SLD	18” X 36” X 80”	96
855SLD	18” X 48” X 80”	116
865SLD	18” X 60” X 80”	136
435SLD	24” X 36” X 80”	111
455SLD	24” X 48” X 80”	136
465SLD	24” X 60” X 80”	171

MB SOLID SERIES

Standard Units Include:

- + 4 or 5 Solid galvanized shelves.
- + 4 Posts – available in 63” or 74”.
- + 5” Non-marking swivel caster, 2 with total lock brakes.
- + 4 Donut bumpers to prevent damage to walls and other equipment.
- + Load capacity up to 1,200 lbs.

See pages 28 - 33 for a full line of accessories.

Additional Shelves page 6



4 SHELF

PART #	DIMENSIONS	WEIGHT (lbs)
MB836SLD	18" X 36" X 69"	82
MB856SLD	18" X 48" X 69"	98
MB866SLD	18" X 60" X 69"	114
MB436SLD	24" X 36" X 69"	94
MB456SLD	24" X 48" X 69"	114
MB466SLD	24" X 60" X 69"	142
MB837SLD	18" X 36" X 80"	84
MB857SLD	18" X 48" X 80"	100
MB867SLD	18" X 60" X 80"	116
MB437SLD	24" X 36" X 80"	96
MB457SLD	24" X 48" X 80"	116
MB467SLD	24" X 60" X 80"	144

5 SHELF

PART #	DIMENSIONS	WEIGHT (lbs)
MB836SLD-5	18" X 36" X 69"	98
MB856SLD-5	18" X 48" X 69"	118
MB866SLD-5	18" X 60" X 69"	138
MB436SLD-5	24" X 36" X 69"	113
MB456SLD-5	24" X 48" X 69"	138
MB466SLD-5	24" X 60" X 69"	173
MB835SLD	18" X 36" X 80"	100
MB855SLD	18" X 48" X 80"	120
MB865SLD	18" X 60" X 80"	140
MB435SLD	24" X 36" X 80"	115
MB455SLD	24" X 48" X 80"	140
MB465SLD	24" X 60" X 80"	175

Basket / IV Bulk Storage



Are adjustable on 1" increments and can be utilized with shelves and other accessories to create a custom storage unit. Shallow front opening allows for easy access to items. Dividers can be added (adjust horizontally) to house various sizes of IV solution bags and other materials. Accessories on page 28-33.

Ideal Solution for:

- Exchange System
- Central Supply Bulk Storage
- Par Level/KanBan Storage

Optional Handle



PART #	DIMENSIONS	WEIGHT (lbs)
MBSK1824CH	18" X 24" X 69"	71
MBSK1836CH	18" X 36" X 69"	93.5
MBSK1848CH	18" X 48" X 69"	116
MBSK1860CH	18" X 60" X 69"	141

PART #	DIMENSIONS	WEIGHT (lbs)
MBSK1824CH-5	18" X 24" X 69"	81
MBSK1836CH-5	18" X 36" X 69"	108.5
MBSK1848CH-5	18" X 48" X 69"	136
MBSK1860CH-5	18" X 60" X 69"	166

Basket / IV Bulk Storage



Increase infection control and aseptic practices with the addition of a solid bottom shelf.

PART #	DIMENSIONS	WEIGHT (lbs)
MBSK1836CH.SLD	18 x 36 x 69"	93.5
MBSK1848CH.SLD	18 x 48 x 69"	116
MBSK1860CH.SLD	18 x 60 x 69"	141
MBSK1836CH-5.SLD	18 x 36 x 69"	108.5
MBSK1848CH-5.SLD	18 x 48 x 69"	136.5
MBSK1860CH-5.SLD	18 x 60 x 69"	166.5

Combo IV Carts

Unit comes with 7 shelves (2 large and 5 small) and 5 baskets. Dividers can be added to compartmentalize storage area. See pages 28-33 for additional accessories.

PART #	DIMENSIONS	WEIGHT (lbs)
COM24-24CH	18" X 48" X 69"	145
COM24-36CH	18" X 60" X 69"	160
COM36-24CH	18" X 60" X 69"	170



DV1810

COM24-36CH has 24" baskets and 36" shelves
 COM36-24CH has 36" baskets and 24" shelves



Sloped Shelf Storage Carts



Sloped Shelf / Suture Carts

Offer an easily identifiable and accessible storage solution. Simplifies the replenishment process, in PAR level and KanBan systems.

PART #	DIMENSIONS	WEIGHT (lbs)
SL424	18" x 24" x 69"	52
SL436	18" x 36" x 69"	64
SL448	18" x 48" x 69"	76
SL524	18" x 24" x 69"	59
SL536	18" x 36" x 69"	74
SL548	18" x 48" x 69"	89



SL-DIV

Double Sided Sloped Shelf / Double Sided Suture Carts

Similar to our single sided sloped shelf, the double sided sloped shelf offers easily accessible storage. These units are ideal for high density applications, where both sides of the unit are accessible.

PART #	DIMENSIONS	WEIGHT (lbs)
STR424	24" X 24" X 69"	71
STR436	24" X 36" X 69"	84
STR448	24" X 48" X 69"	95
STR524	24" X 24" X 69"	77
STR536	24" X 36" X 69"	91
STR548	24" X 48" X 69"	104



STR-DIV



Sloped Shelf Storage Carts

Combo Suture Carts

SUT2-48-4B includes 4- 18" x 48" shelves, 2- 18" x 48" sloped shelves, 4 drawers/bins, 4 sets of bin rails, 4 posts, 4 donut bumpers and 4 casters

SUT3-48-2B includes 3- 18" x 48" shelves, 3- 18" x 48" sloped shelves, 2 drawers/bins, 2 sets of bin rails, 4 posts, 4 donut bumpers and 4 casters

PART #	DIMENSIONS	WEIGHT (lbs)
SUT2-48-4B	18" x 48" x 69"	108
SUT3-48-2B	18" x 48" x 69"	102



Open Top Cart

Allows for additional vertical storage space for odd shaped items. The three sided frame is utilized when the highest shelf level is more than 24" from the top of the unit. Additional accessories found on pages 28-33.

PART #	DIMENSIONS	WEIGHT (lbs)
OT1848	18" x 48" x 69"	100
OT1860	18" x 60" x 69"	121
OT2448	24" x 48" x 69"	116
OT2460	24" x 60" x 69"	137

BIN CARTS STORAGE

These carts utilize a combination of wire shelves and/or plastic bins to provide a variety of storage solutions.



PART #	DIMENSIONS	WEIGHT (lbs)
CVTU	24" X 60" X 69"	201



PART #	DIMENSIONS	WEIGHT (lbs)
ORVTU	24" X 72" X 69"	265



PART #	DIMENSIONS	WEIGHT (lbs)
DRAW-4	24" X 24" X 49"	58



PART #	DIMENSIONS	WEIGHT (lbs)
DRAW-7	24" X 24" X 69"	84



PART #	DIMENSIONS	WEIGHT (lbs)
DRAW-14	24" X 42" X 69"	130



Solid Shelf Security Cages

Security cages are an ideal method for storing and transferring costly materials and items subject to pilferage. Open wire construction (2" x 2") allows for visibility into the unit, so items can be checked at any time. Casters can be added for mobile applications. A dolly base and plate casters are available for heavy-duty transport applications.



Security Cages (Solid Interior Shelves)

PART #	DIMENSIONS	WEIGHT (lbs)
SEC363F-SLD	24X36X60 3 SHF TSS	216.0
SEC364F-SLD	24X36X60 4 SHF TSS	228.0
SEC365F-SLD	24X36X60 5 SHF TSS	240.0
SEC483F-SLD	24X48X60 3 SHF TSS	262.0
SEC484F-SLD	24X48X60 4 SHF TSS	278.0
SEC485F-SLD	24X48X60 5 SHF TSS	294.0
SEC603F-SLD	24X60X60 3 SHF TSS	296.0
SEC604F-SLD	24X60X60 4 SHF TSS	315.5
SEC605F-SLD	24X60X60 5 SHF TSS	335.0

MINI SECURITY CAGE

PART #	DIMENSIONS	WEIGHT
MB1836-2	18 x 36 x 40	56
MB1836-3	18 x 36 x 40	65.5
MB1836-3	18 x 36 x 40	75



Mobile Security Cages

PART #	DIMENSIONS	WEIGHT (lbs)
MSEC363F-SLD	24" x 36" x 69"	224
MSEC364F-SLD	24" x 36" x 69"	236
MSEC365F-SLD	24" x 36" x 69"	248
MSEC483F-SLD	24" x 48" x 69"	270
MSEC484F-SLD	24" x 48" x 69"	286
MSEC485F-SLD	24" x 48" x 69"	302
MSEC603F-SLD	24" x 60" x 69"	304
MSEC604F-SLD	24" x 60" x 69"	324
MSEC605F-SLD	24" x 60" x 69"	343



Dolly Base Security Cages (Solid Interior Shelves)

PART #	DIMENSIONS	WEIGHT (lbs)
RDSEC363F-SLD	24" x 36" x 70"	264
RDSEC364F-SLD	24" x 36" x 70"	276
RDSEC365F-SLD	24" x 36" x 70"	288
RDSEC483F-SLD	24" x 48" x 70"	323
RDSEC484F-SLD	24" x 48" x 70"	339
RDSEC485F-SLD	24" x 48" x 70"	355
RDSEC603F-SLD	24" x 60" x 70"	371
RDSEC604F-SLD	24" x 60" x 70"	391
RDSEC605F-SLD	24" x 60" x 70"	410

Wire Shelf Security Cages



Security Cages (Wire Interior Shelves)

PART #	DIMENSIONS	WEIGHT (lbs)
SEC363F	24X36X60 3 SHF TSS	216.0
SEC364F	24X36X60 4 SHF TSS	228.0
SEC365F	24X36X60 5 SHF TSS	240.0
SEC483F	24X48X60 3 SHF TSS	262.0
SEC484F	24X48X60 4 SHF TSS	278.0
SEC485F	24X48X60 5 SHF TSS	294.0
SEC603F	24X60X60 3 SHF TSS	296.0
SEC604F	24X60X60 4 SHF TSS	315.5
SEC605F	24X60X60 5 SHF TSS	335.0



Mobile Security Cages (Wire Interior Shelves)

PART #	DIMENSIONS	WEIGHT (lbs)
MSEC363F	24" x 36" x 69"	224
MSEC364F	24" x 36" x 69"	236
MSEC365F	24" x 36" x 69"	248
MSEC483F	24" x 48" x 69"	270
MSEC484F	24" x 48" x 69"	286
MSEC485F	24" x 48" x 69"	302
MSEC603F	24" x 60" x 69"	304
MSEC604F	24" x 60" x 69"	324
MSEC605F	24" x 60" x 69"	343

Dolly Base Security Cages (Wire Interior Shelves)

PART #	DIMENSIONS	WEIGHT (lbs)
RDSEC363F	24" x 36" x 70"	264
RDSEC364F	24" x 36" x 70"	276
RDSEC365F	24" x 36" x 70"	288
RDSEC483F	24" x 48" x 70"	323
RDSEC484F	24" x 48" x 70"	339
RDSEC485F	24" x 48" x 70"	355
RDSEC603F	24" x 60" x 70"	371
RDSEC604F	24" x 60" x 70"	391
RDSEC605F	24" x 60" x 70"	410

*Not Pictured.

Catheter Storage Carts

Our various catheter storage/procedure carts are capable of holding a variety of catheter packages. Based on a modular design, all components are adjustable. Add slides, bins, hooks and wire ledges as needed to customize your cart. See pages 34 - 39 for additional accessories.

PART #	DIMENSIONS	WEIGHT (lbs)
CRS48CH	24" x 48" x 69"	82
CRS60CH	24" x 60" x 69"	101

*Note: 48" Unit includes 8 Catheter Hooks per bar.
60" Unit includes 10 Catheter Hooks per bar.



Sterile Wrap Cart

Designed for use with both reusable and disposable linen wraps. Each cart comes with 4 hanging bars of square tubular construction that can be placed at varying heights on the cart. Additional bars allow for added wrap capacity.

PART #	DIMENSIONS	WEIGHT (lbs)
WC48CH	24" x 48" x 69"	103
WC60CH	24" x 60" x 69"	114
WC48B	Extra bar for 48" Wrap Cart	
WC60B	Extra bar for 60" Wrap Cart	

Combo Catheter Storage Carts

Add slides, bins, hooks and wire ledges as needed to customize your cart. See pages 28 - 33 for additional accessories.

PART #	DIMENSIONS	WEIGHT (lbs)
CRS60CH-24B	24" x 60" x 69"	146
CRS60CH-36B	24" x 60" x 69"	149

*Note: 24" Unit includes 4 Catheter Hooks per bar.
36" Unit includes 6 Catheter Hooks per bar.





Patient Apparel Cart

Allows for efficient distribution of folded clothing in individual compartments and hanging garments in a separate area. Additional accessories available on pages 28 - 33

*Note- Comes with 8 dividers, only 6 shown.

PART #	DIMENSIONS	WEIGHT (lbs)
AP48CH	24" x 48" x 69"	131
AP60CH	24" x 60" x 69"	146

Small Workstation Cart

TSS workstation cart allows operator to position totes, bins, cartons or sub-assemblies for pick and place operations.

PART #	DIMENSIONS	WEIGHT (lbs)
WS1824SL	18" x 24" x 40"	30
WS1836SL	18" x 36" x 40"	36
WS1848SL	18" x 48" x 40"	41



Large Workstation Cart

Type 304 stainless steel work surface allows for clean, obstruction free surface for the preparation of surgical packs. Includes an additional 14" deep shelf for added storage and quick access to required tools or materials.

PART #	DIMENSIONS	WEIGHT (lbs)
WS2460SS	24" x 60" x 69"	67



Utility Carts

TSS Utility Carts offer a highly effective way to create mobile space. These carts are designed to handle and distribute a large volume of materials safely and efficiently. Select from any combination of solid or wire shelves to best suit your needs.

*Contact us for custom configurations with solid shelves.



*Shown with Option solid shelf

PART #	DIMENSIONS		WEIGHT (lbs)
RD243CH	2 SHELF UTL	24X30	45
RD244CH	2 SHELF UTL	24X36	47
RD246CH	2 SHELF UTL	24X48	53
RD282CH	2 SHELF UTL	18X24	34
RD283CH	2 SHELF UTL	18X30	37
RD284CH	2 SHELF UTL	18X36	40

PART #	DIMENSIONS		WEIGHT (lbs)
RD343CH	3 SHELF UTL	24X30	52
RD344CH	3 SHELF UTL	24X36	60
RD382CH	3 SHELF UTL	18X24	39
RD383CH	3 SHELF UTL	18X30	43
RD384CH	3 SHELF UTL	18X36	47



Single Sided Utility Cart

PART #	DIMENSIONS	WEIGHT (lbs)
S-RD243CH	24" X 30" X 40"	43
S-RD244CH	24" X 36" X 40"	45
S-RD246CH	24" X 48" X 40"	51
S-RD282CH	18" X 24" X 40"	32
S-RD283CH	18" X 30" X 40"	35
S-RD284CH	18" X 36" X 40"	38
S-RD343CH	24" x 30" x 40"	50
S-RD344CH	24" X 36" X 40"	58
S-RD382CH	18" X 24" X 40"	37
S-RD383CH	18" X 30" X 40"	41
S-RD384CH	18" X 36" X 40"	45

*Note - RD2 carts are two shelves and RD3 carts are 3 shelves.



Bulk Transport Cart

Tubular steel bulk transport cart is a versatile method for transporting large loads. Center casters create cantilever action promoting easier transport of heavy loads. Comes with a quantity of 6 - 5" casters.

PART #	DIMENSIONS	WEIGHT (lbs)
FC1837	18" x 44" x 37"	38



Stock Cart Open Mesh Top

Provides versatile method for transporting and storing supplies. Open mesh top shelf and tubular steel base, allow for loads up to 250 lbs.

PART #	DIMENSIONS	WEIGHT (lbs)
20.435	18.5" x 43.5" x 40"	47.5



SUPPLY CART

PART #	DIMENSIONS	WEIGHT (lbs)
MC24.1	18 X 42 X 40	36
MC24.2	18 X 42 X 40	34.5



Pick Cart

Utilizes two-tier self contained storage to quickly and efficiently pick and deliver required materials. Short wheel base and "nesting" ability conserves space. Handles and bumpers available in black, blue or red.

PART #	DIMENSIONS	WEIGHT (lbs)
5141-D	27.25 x 39.5 x 20.5	37
Top Basket	17.5 x 10 x 16	
Bottom Basket	17.5 x 8 x 16	

Our covers are offered in a variety of materials including: Tech-Chek Vinyl, ESD Vinyl, 400 & 200 Denier Nylon, Spun-Filament Polyester, 12 Gauge Clear Vinyl and 20 Gauge Clear Vinyl.



FEATURES / OPTIONS

Standard Features Include: Full Flaps, Reinforced Corners, Velcro® Tab or Zipper Closures, 12 Point Inspection, and Double Needle Construction.

Available Options: Hand Hole(s), Handle Hole(s), Velcro® Strip Closures, Clear Vinyl Front Flap, 9" x 12" Clear Routing Pocket, Top & Bottom Tie Tapes, Side Flaps, Linen Pocket, Clear Vinyl Windows, Custom Screen Printing and Stenciling.

CART COVER MATERIAL

Tech-Chek Vinyl	10 oz. per square yard reinforced Vinyl. Fabric Qualities include: Flame Resistant, Stain/Tear Resistant, Antistatic, Odor Resistant, Fluidproof, Antimicrobial, Easy to Maintain.
12 Gauge Clear Vinyl	12 Gauge Clear Vinyl is marine grade, mildew resistant and UV stabilized. Allows for easy viewing of cart's contents.
ESD Vinyl	10 oz. per square yard reinforced Vinyl with special anti-conductive properties. Fabric Qualities include: Fluidproof, Antimicrobial, Flame Resistant, Stain/Tear Resistant, Electrically Conductive, Hypoallergenic, Self-Deodorizing, Easy to Maintain.
400 Denier Nylon	Heavy weight alternative to 200 Denier. Colors include: White, Royal, Navy, Red, Yellow, and Forest Green. Good for stationary or moving carts.
200 Denier Nylon	Medium weight, flexible. Best for stationary carts. Colors include: White, Royal, Navy, Red, Yellow, Kelly, & Forest Green.

How to Design Your Cart Cover

1. Accurately measure width, length and height (do not allow for clearance, give exact measurements, height to above casters.)
2. Determine corner style. (round end, round front or square)
3. Determine fabric and color.
4. Determine flap closure. (velcro or zippered)
5. Indicate any special options.
6. Make a simple illustration, if needed.

****To be priced per application on cart covers**

ACCESSORIES



WIRE LEDGES

Can be used in static or mobile applications to prevent stored contents from protruding or falling off the shelf.

PART #	DIMENSIONS	WEIGHT (lbs)
L141CH	14 X 1" CHROME	0.50
L144CH	14 X 4" CHROME	1.00
L181CH	18 X 1" CHROME	0.50
L184CH	18 X 4" CHROME	1.00
L211CH	21 X 1" CHROME	1.00
L214CH	21 X 4" CHROME	2.00
L241CH	24 X 1" CHROME	1.00
L244CH	24 X 4" CHROME	2.00
L301CH	30 X 1" CHROME	1.00
L304CH	30 X 4" CHROME	2.00
L361CH	36 X 1" CHROME	1.50
L364CH	36 X 4" CHROME	2.50
L421CH	42 X 1" CHROME	1.50
L424CH	42 X 4" CHROME	2.50
L481CH	48 X 1" CHROME	2.00
L484CH	48 X 4" CHROME	3.00
L541CH	54 X 1" CHROME	2.00
L544CH	54 X 4" CHROME	3.00
L601CH	60 X 1" CHROME	2.50
L604CH	60 X 4" CHROME	3.50
L721CH	72 X 1" CHROME	3.00
L724CH	72 X 4" CHROME	4.00

DIVIDERS

Allow you to quickly and easily organize the contents of your shelving unit. At 8" high, this divider boasts a unique pressure-fit design that allows it to attach to the top or bottom of your shelf.



PART #	DIMENSIONS	WEIGHT (lbs)
D148CH	14 X 8	1
D188CH	18 X 8	1
D218CH	21 X 8	1.5
D248CH	24 X 8	1.5



Cantilever Brackets-Direct Wall Mount

Turn unused wall area into overhead or above work surfaces storage space. Use double supports to mount adjacent shelves, single supports at ends. Capacity is dictated by wall construction and anchor type. Let Tec nibilit help design your wall mounted storage. Call us today for assistance!

PART #	DIMENSIONS	WEIGHT (lbs)
DMB14CH	14"	2
DMB18CH	18"	3
DMB21CH	21"	3.5
DMB24CH	24"	4
DMB14CH.2	14"	3
DMB18CH.2	18"	4
DMB21CH.2	21"	4.5
DMB24CH.2	24"	5



Cantilever Brackets-Post Mount

PART #	DIMENSIONS	WEIGHT (lbs)
SMB14CH	14"	2
SMB18CH	18"	3
SMB21CH	21"	3.5
SMB24CH	24"	4
SMB14CH.2	14"	3
SMB18CH.2	18"	4
SMB21CH.2	21"	4.5
SMB24CH.2	24"	5

WALL MOUNT BRACKET

Secures free standing and cantilever post mount shelving to wall. Capacity is dictated by wall construction and anchor type. Anchor bolts not included. Sold individually.



PART #	DIMS	WEIGHT
WMB	3.5" x 1"	1

ACCESSORIES



Screen Clip
pg.33

END/BACK SCREEN

All welded wire construction (3" x 3" mesh), offers an effective way to keep contents from moving or falling off during transportation. Screen hangs from top shelf level and fastens with screen clips.

END SCREEN

PART #	DIMENSIONS	WEIGHT (lbs)
PEC1460CH	14 X 60 - CHROME	6.00
PEC1472CH	14 X 72 - CHROME	8.00
PEC1860CH	18 X 60 - CHROME	7.5
PEC1872CH	18 X 72 - CHROME	9
PEC2160CH	21 X 60 - CHROME	10
PEC2172CH	21 X 72 - CHROME	10
PEC2460CH	24 X 60 - CHROME	12
PEC2472CH	24 X 72 - CHROME	13.5

BACK SCREEN

BRD3660CH	36 X 63 - CHROME	16.5
BRD4260CH	42 X 63 - CHROME	20.5
BRD4860CH	48 X 63 - CHROME	24
BRD5460CH	54 X 63 - CHROME	27
BRD6060CH	60 X 63 - CHROME	30
BRD7260CH	72 X 63 - CHROME	35
BRD3672CH	36 X 74 - CHROME	20
BRD4272CH	42 X 74 - CHROME	24.5
BRD4872CH	48 X 74 - CHROME	28
BRD5472CH	54 X 74 - CHROME	32
BRD6072CH	60 X 74 - CHROME	35
BRD7272CH	72 X 74 - CHROME	41



ALUMINUM DUNNAGE RACK

PART #	DIMENSIONS	WEIGHT (lbs)
AL1836	18 X 36 X 8	16
AL1848	18 X 48 X 8	19
AL2436	24 X 36 X 8	18
AL2448	24 X 48 X 8	22
AL2460	24 X 60 X 8	26



COAT ROD / HANG BAR

Can be added to any shelving unit, to accommodate patient or staff apparel. Specify size of shelf when ordering.

PART #	DIMENSIONS	WEIGHT (lbs)
HBAR36	36" X 4"	3
HBAR48	48" X 4"	4
HBAR60	60" X 4"	5



SUPPLY / ACCESSORY BASKET

Small basket can be added to existing shelving, to create an additional storage compartment. Ideal for latex gloves and other small boxed articles.

PART #	DIMENSIONS	WEIGHT (lbs)
HB715	7 X 15 X 7	2



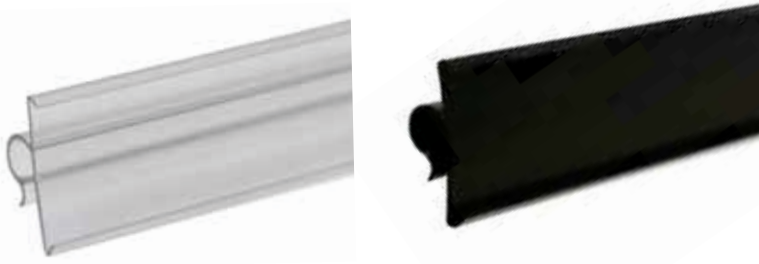
3 SIDED FRAME

Attaches to all four posts, to provide additional structure and rigidity to the perimeter of a shelving unit.

PART #	DIMENSIONS	WEIGHT (lbs)
3F1836CH	18" x 36"	8
3F1848CH	18" x 48"	9
3F1860CH	18" x 60"	10
3F2436CH	24" x 36"	9
3F2448CH	24" x 48"	10
3F2460CH	24" x 60"	11

LABEL HOLDERS

FLAT SHELF LABEL HOLDER:



PART #	DIMS
LH24CL	24" x 1"
LH24B	24" x 1"
LH30CL	30" x 1"
LH30B	30" x 1"
LH36CL	36" x 1"
LH36B	36" x 1"
LH42CL	42" x 1"
LH42B	42" x 1"

PART #	DIMS
LH48CL	48" x 1"
LH48B	48" x 1"
LH54CL	54" x 1"
LH54B	54" x 1"
LH60CL	60" x 1"
LH60B	60" x 1"
LH72CL	72" x 1"
LH72B	72" x 1"

BASKET LABEL HOLDER:



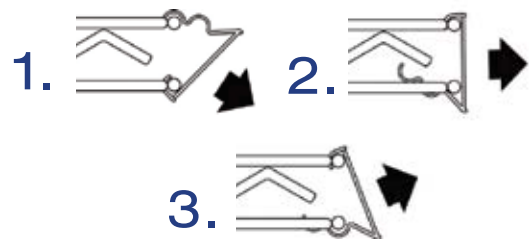
PART #	DIMS
LHB24CL	24" X 1"
LHB24B	24" X 1"
LHB36CL	36" X 1"
LHB36B	36" X 1"

PART #	DIMS
LHB48CL	48" X 1"
LHB48B	48" X 1"
LHB60CL	60" X 1"
LHB60B	60" X 1"

3 POSITION LABEL HOLDER:



PART #	DIMS
LH03BLUE	3"
LH24BLUE	24"
LH36BLUE	36"
LH48BLUE	48"
LH60BLUE	60"
LH72BLUE	72"



SNAP + RELEASE LABEL HOLDERS

Color code by expiration date, lead time, supply type or department. Allows for rapid identification of inventory and helps reduce the likelihood for stock.



PART #	DIMS
LR03RD	1.5" x 3"



PART #	DIMS
LR03YL	1.5" x 3"



PART #	DIMS
LR03CL	1.5" x 3"

*NOTE: 50 LABEL HOLDERS PER BAG



PART #	DIMS
LR03GR	1.5" x 3"



PART #	DIMS
LR03BL	1.5" x 3"

ACCESSORIES



U HANDLE

Build your own special size chrome wire shelving utility cart with three different u-handle width choices: 18", 21" or 24"

PART #	DIMENSIONS	WEIGHT (lbs)
RD18CH	18" X 34"	6
RD21CH	21" X 34"	7
RD24CH	24" X 34"	8



PUSH / PULL HANDLE

Allows for increased leverage and maneuverability of carts during transport. Handles can also be used with high density systems, to increase productivity.

PART #	DIMENSIONS	WEIGHT (lbs)
PH18CH	18" x 1"	2
PH24CH	24" x 1"	3



SHELF INLAY

Translucent shelf liners prevent small items from falling through wire shelves. Custom sizes available upon request.

PART #	DIMENSIONS
AM1836PF	18" x 36"
AM1848PF	18" x 48"
AM1860PF	18" x 60"
AM1872PF	18" x 72"
AM2436PF	24" x 36"
AM2448PF	24" x 48"
AM2460PF	24" x 60"
AM2472PF	24" x 72"



DOLLY BASE

Adds stability and support for heavy-duty or over the road applications. Plate caster also provides additional weight capacity compared to stem castered units. Increases unit capacity to 2,000 lbs

PART #	DIMENSIONS	WEIGHT (lbs)
RD9836	18" X 36"	30
RD9848	18" X 48"	40
RD9860	18" X 60"	50
RD9436	24" X 36"	40
RD9448	24" X 48"	53
RD9460	24" X 60"	67

ACCESSORIES

**BINS**

Safe and efficient method for protecting and compartmentalizing small to medium sized items. Customizable with the addition of dividers.

WIRE BINS COMING SOON

PART #**DIMENSIONS**

TB40	17.25" x 22.25 x 6
CH30 Bin Card Holder	

**BIN DIVIDERS**

Slide in dividers allow for instant, custom bin configuration.

PART #**DIMENSIONS**

DV17	15.5" x 5.5"
DV22	20.5" x 5.5"

**SPLIT SLEEVE ADAPTERS**

Extra adapters for 1" diameter posts, come four per bag. One bag secures one shelf level.

PART #

PBAG

**POST CLAMP**

Provides extra measure of strength and stability for units in consecutive runs.

PART #**WEIGHT**

CLAMPCH - CHROME	0.5
CLAMPPW - DUROSEAL	0.5

**S-HOOK**

Units can be joined together perpendicularly or side by side to create continuous runs of shelving. Two s-hooks per shelf level are required, in place of posts.

PART #

PBC200.TSS

**DONUT BUMPER**

Seats over caster, on post to protect walls and other units from damage.

PART #**DIMENSIONS**

DRB325	3.25" x 3.25"
--------	---------------

ACCESSORIES

POST EXTENDER

Allows for the addition of vertical storage space. Screw double threaded bolt and extra foot casting together. Contact Technibilt for instructions installing units higher than 86".

PART #	WEIGHT
TRBCON	.5



LEVELING BOLT + PLUG

Aides leveling of shelving unit on un-even surfaces. Should be used with most stationary applications and are included in every package of posts.

PART #
PLUG - FOOT CASTING
BOLT - LEVELING BOLT



SCREEN CLIP

Fastens screen more securely to shelving unit and allows for quieter transport of enclosed wire carts.

PART #	DIMS
SSCLIP	1" x 1"



FOOT PLATE

Enables the shelving unit to be fastened to the floor. SPECS: 3/8" diameter thread

PART #
FP - Chrome Plus
SFP - Stainless Steel



5" Non Marking Swivel Caster

PART #	WEIGHT (lbs)
5C	2
5CB	2



3" Threaded Stem Casters

PART #	WEIGHT (lbs)
3C	2
3CB	2



Plate Casters

PART #	WEIGHT
C5	5
C5B	5
C6	6
C6B	6

*Note: B indicates caster model with brake



Conductive Casters

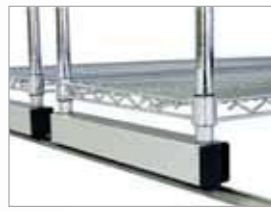
PART #	WEIGHT
5C.CON	2
5CB.CON	2



Expandable Stem Casters

PART #	WEIGHT
SSC5C	2
SSC5CB	2

Technibilt High Density moveable aisle system increases the storage capacity of a given area by 40-50%. Our versatile system allows for more storage units to be installed in a defined space, preventing the need for expansion or renovation of existing storage areas. An open, moveable aisle (usually 36") allows access to each level of each shelving unit, eliminating dead or wasted spaces.



Skate Roller

VTrack

***NSF APPROVED**

**Maximizes Storage Capacity + Increases Productivity
= *Cost-Saving Performance***

Technibilt HD System uses a skate concept, utilizing the structural integrity of the Technibilt Storage Systems(TSS) shelving units.

The low-profile, non-corrosive aircraft aluminum track measures 7/16" at its highest peak, allowing for easy cleaning and ADA compliance. Floor tracks provide a smooth, level surface, when inconsistent or uneven floor conditions exist.

Industrial-type bearings allow loaded units (up to 1,500 lbs.) to glide effortlessly over the track.

Components



Skate



Mounting Provisions



End Stop

Aluminum Skates

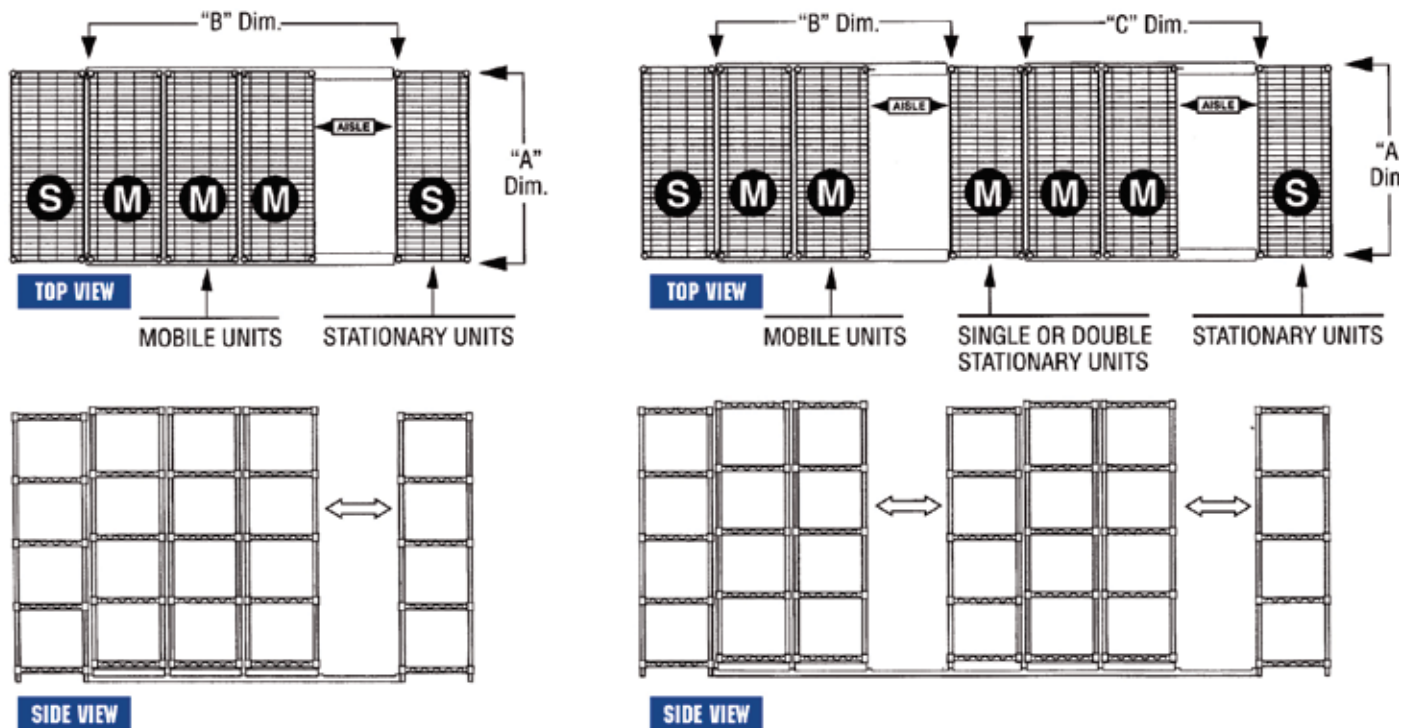
PART #	DIMENSIONS
SK18TS	18" x 2" x 2"
SK21TS	21" x 2" x 2"
SK24TS	24" x 2" x 2"
SK30TS	30" x 2" x 2"

Additional Components

VTRACK - V-Groove Track - is fabricated from extruded, anodized aluminum and stainless steel, offering corrosion free construction. Track is sold on a per inch basis to maximize available storage areas.

ESTOP - End Stop Kit - Kit includes 2 ends and 1 drill bit. Positioned at both ends of each track. Serves the dual purpose of stopping the skate/shelving unit and is also the anchor point for the track run.

WINGKIT - Includes 1/4" thick plates and all mounting hardware. Allows for the joining of two units, side by side, sharing one track.



Stationary units at the end or center of a high density system are not a requirement for our track shelving system. VTRACK can run the full width of system provided at least one aisle space is allowed.

WAYS TO ORDER

1. Select desired length of track and if you require a single or double unit track.
2. Select corresponding skate size. Skate size should match depth of unit.
3. Determine how many units will fit onto track, allowing for a recommended 30" - 36" aisle.

TERMS AND CONDITIONS

ACCEPTANCE

All orders are subject to acceptance of terms and conditions of sale, regardless of the form in which submitted. All orders are subject to price prevailing at date of shipment and are quoted ex-works Newton, NC. Custom manufactured or special order products may be subject to a deposit at the time of order, and are non-returnable

ORDER CONFIRMATION

To avoid duplication of order, the word "CONFIRMATION" should appear on all documents which are sent to confirm orders already placed by telephone, fax or any other method.

PAYMENT TERMS

Terms are Net 30 days, ex-works shipping plant (subject to credit approval). Freight, taxes and handling charges are not subject to discount. An annual service charge of 18% will be assessed on past due accounts.

SHIPMENTS

Shipments will be made ex-works plant. If goods are damaged when received, buyer must declare such damages at the time of receipt of merchandise, directly on the shipping documents and claim must be filed immediately with the transport company, copy to original point of sale.

If after receipt of merchandise, concealed damage is discovered, buyer must immediately notify the delivering carrier requesting an inspection. This inspection report should be used to support buyer's claim against the carrier. Any claim for damage or shortage must be filed by buyer with the delivering carrier, copy to original point of sale. Unless a preferred routing is specified at time of order, shipment will be made the best way, transportation prepaid and added to invoice. For COLLECT shipments, buyer will be fully responsible for all damages and claims.

RETURN POLICY

1. All returns must be authorized by original sales point.
2. Each request must include the following:
 - A. Customer name and address.
 - B. Our invoice number.
 - C. Our invoice date.
 - D. Customer P.O. number.
 - E. Quantity, item number and description of item.
 - F. Reason for return.
3. Upon receipt of your request, a return authorization number will be issued by us and this must be clearly referenced with your return of the new, unused merchandise.

Returns will not be authorized for the following:

1. Items purchased on a "special order" basis (unless original vendor will accept the return).
2. Items that are custom manufactured.
3. Goods damaged or bent and without original packaging / shipping documents.

SPECIFICATIONS

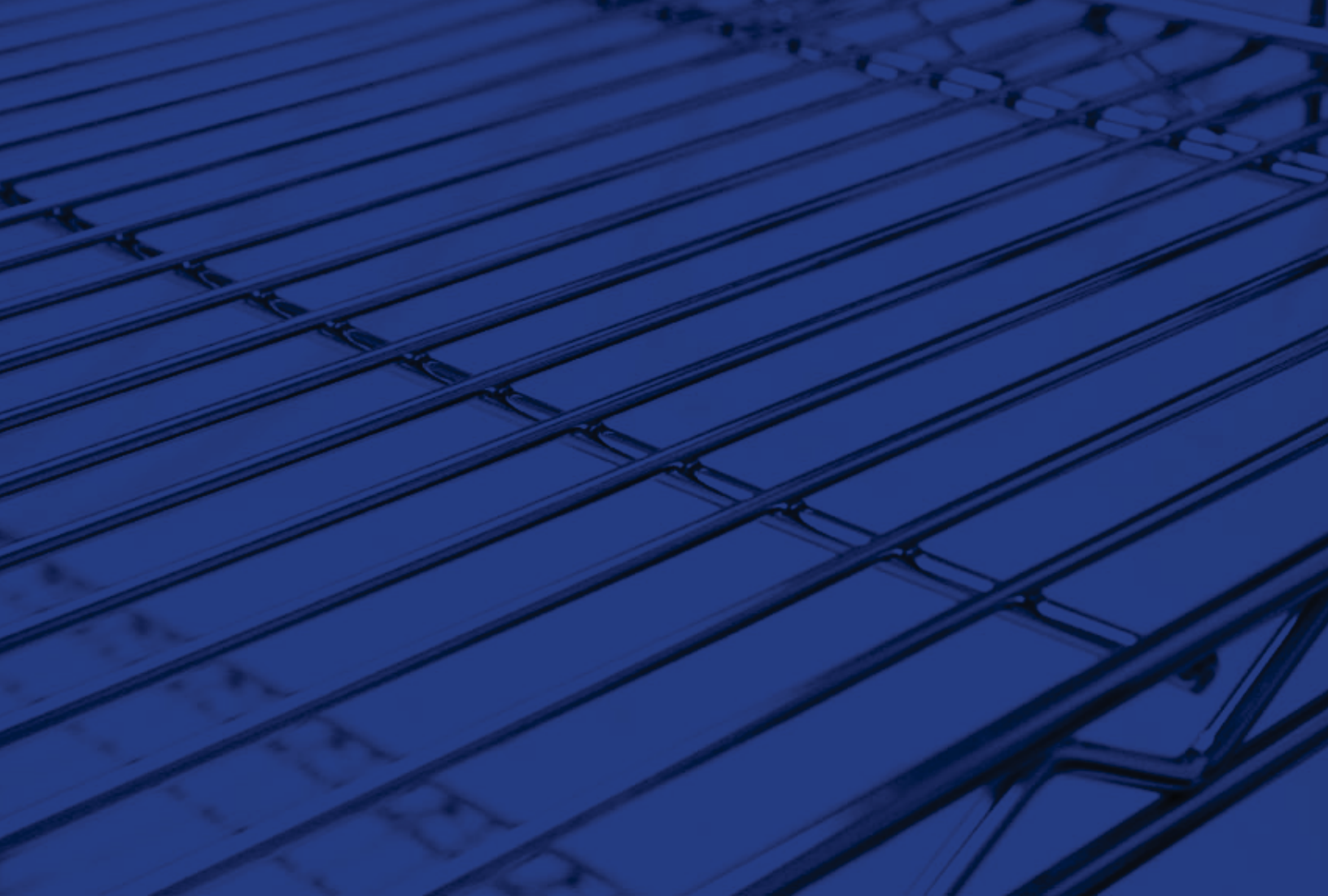
All dimensions and shipping weight are approximate. Technibilt reserves the right to change specifications or substitute products of equal specifications without notice. Technibilt also reserves the right to cease manufacturing or distribution of any product without notice. Manufacturer's specifications and prices are subject to change without notice. MERCHANDISE WILL REMAIN THE PROPERTY OF TSS USA UNTIL COMPLETE AND FINAL PAYMENT IS RECEIVED.

FREIGHT CLASSIFICATION

NOIBN (KD Flat) Rating 70 for shelving or collapsible unit unless otherwise specified.

WARRANTY CLASSIFICATION

TECHNIBILT USA products are warranted to be free from defective material and workmanship under use and service for a period of one year from the date of original invoice to the customer. During this period, TSS will repair or replace (at its option) without charge, ex-works plant of manufacture, the equipment or any part thereof which factory inspection discloses to be defective. Shipments of defective material for repair must be sent prepaid. Duro Seal finish is warranted against rust for a period of 16 years (pro rated) from date of original invoice to the customer. This warranty supersedes any other warranties implied or expressed.



SOUTHWEST **SOLUTIONS** GROUP
business organization systems

www.southwestsolutions.com

Toll Free 1-800-803-1083