

Protect your art while saving space. Introducing the Borroughs retractable art racks—designed to be sturdy and space efficient while maintaining ease-of-use and pain free installation. These racks mount to the floor removing the need for ceiling support. The linear motion design allows individual units to be accessed without disturbing adjacent artwork. Our art racks are designed with double-sided panels made of braided wire mesh – for hanging configuration flexibility. Borroughs racks provide a smooth and quiet operation making them ideal for museum or professional applications.

**Features:**

Because the carriages slide in and out the natural egress aisle in front of the shelving is utilized as the access aisle.

Extends 100% of the base footprint dimension allowing for maximum accessibility, thus saving valuable floor space.

Aluminum carriage construction offers superior loading capacity and easy handling.

Steel tubular welded upper frames ensure strength and longevity.

The only art storage rack system with air pistons to create a soft stop—virtually vibration free movement.

Sealed roller bearings glide on a stainless steel track guaranteeing a maintenance free system.

Customize the number of carriages to your specific storage requirements.

Furniture quality powder coat finish is inert and non off-gassing.

All units include leveling frame which allow for easy leveling while securing the unit to the floor.

**Specifications:**

Individual Carriage Size:  
83.125”h x 61.875”d x 15.25” w

Capacity: 650 lb per carriage

Art panel: 72”h x 56”w, 8 ga steel wire mesh with 2” x 2” squares, recessed to provide flush panel surface

**Accessories:**

S hooks - safely hang artwork from 2” stainless steel hooks (26 lb load capacity)

End-panels - create a tidy, streamered lined look with steel end panels.



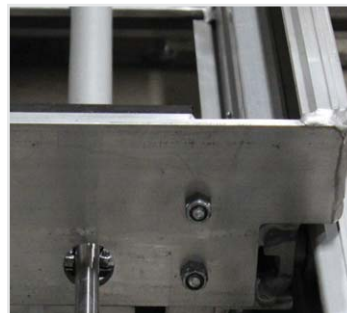
Unit shown with three carriages. Model #



Stainless steel “S” hooks provide secure hanging of art.



2” x 2” powder coat wire mesh allows flexibility in storage configurations.



Three-stage carriage designed to decrease the unit footprint.



Optional end panels create a sleek finish.