



# **museum**

## **STORAGE SOLUTIONS**

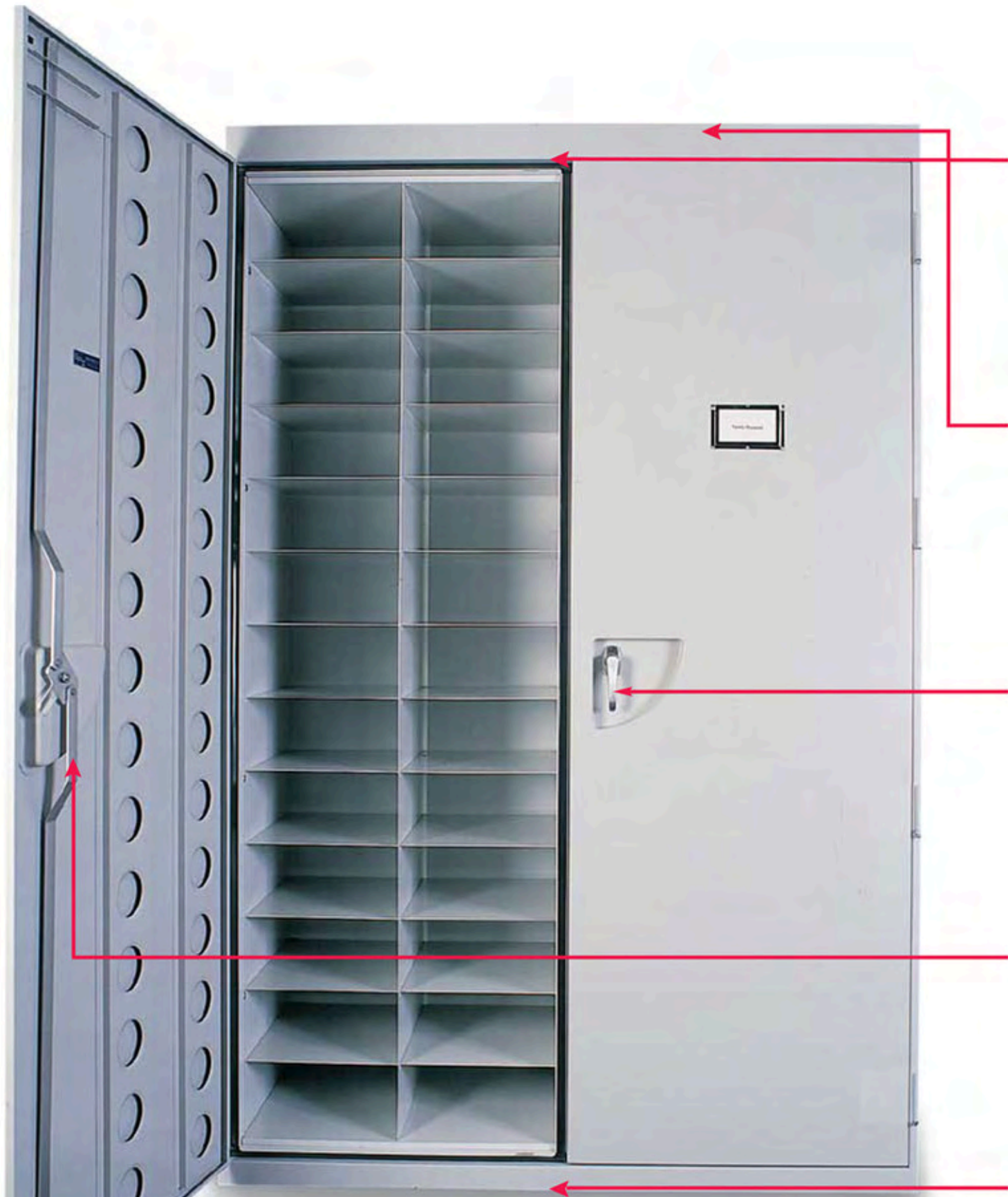


**SOUTHWEST SOLUTIONS GROUP**

*business organization systems*

[www.southwestsolutions.com/museum](http://www.southwestsolutions.com/museum)

Toll Free 1-800-803-1083



**SOUTHWEST SOLUTIONS GROUP**

*business organization systems*

[www.southwestsolutions.com/museum](http://www.southwestsolutions.com/museum)

Toll Free 1-800-803-1083

# Exclusive Design Features

## 100% Closed Cell Silicone Gaskets



Mechanically held in place, they provide an airtight storage environment that minimizes exposure to dust, insects and other contaminants.

## 90 Degree Lift-Off Pin Hinge



Doors open a full 180 degrees and lift off easily for curatorial convenience. No tools are required.

# Standard Features

## Full Overhang Top

To ensure watertight protection from unexpected hazards, cabinets are designed with a full overhang top.

## Label Holder



3" x 5" zinc plated steel card holder makes identification easy.

## Ergonomic Recessed Handles

Easy to grasp and open. Key lockable. Designed to be ergonomically correct. Because they are recessed, the doors lay flat when open and accommodate complete aisle closure in high-density mobile storage applications.

## Powder Coat Paint

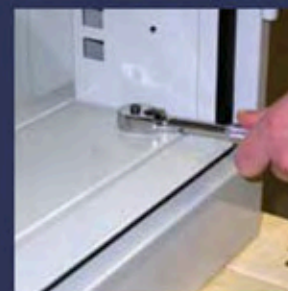


This non-gassing baked finish ensures that collections are safe for long-term storage.

## Three Point Latching System

The system ensures maximum security and a tight seal by requiring a single handle turn, which engages the door at three points.

## Four Levelers Adjustable From Inside



Allows easy leveling of cabinet. Four inside leveling screws for easy adjustment. No special tools required, adjustable with a standard socket wrench.

## Heavy-Duty Reinforced Steel Construction

High quality steel provides the extra strength and rigidity necessary to withstand the heaviest of loads.

# Additional Museum

## Adjustable Shelf



Using slotted uprights, the "bayonet" universal mountings snap into place and can be adjusted for flexibility. Equally impressive, the shelves hold excessive weight loads.

## Castor Base



Heavy-duty frame construction with casters to allow easy ability to move cabinets.

## Slide-Out Tray



On fixed runners, the trays slide out easily for specimen access.

## Rolled Textile Storage



Available in drawer-mounted, cabinet or rack styles.

## Full-Suspension Ball-Bearing Slides



Roll-out drawers provide full extension and hold up to 500 lbs. on select models.

## Visual Doors



Full-view safety glass for easy viewing of objects in storage.

# m Storage Options

## Long Arm Storage



Storage for all varieties of longer collections (weapons, arms, spears) cushioned cut-outs for long lasting conservation for every collection.

## Pull-Out Work Shelf



Pull-out workshelf for curatorial convenience. A pull-out work shelf helps to sort through objects without taking them to another area.

## Flip-Down Drawer Front



This feature is wonderful for oversized cabinets. Helps to eliminate the lifting of heavier items out of a drawer but offers the security of additional protection from the front.

## Textile Rod



Adjustable textile rod for hanging garments.

## Open Front Full-Extension Drawer



Convenient and easy removal of objects out of a drawer without lifting or damaging.

## Vents



Vents with closure for additional air-flow to the collection.

# Entomology Cabinets

## model E10

### E-Series Standard Features



- Lift-off reinforced doors
- Three-point latching system
- Lever-Ease recessed full lever handles, with key lock
- Vanguard closed-cell pure silicone gasket, mechanically held in place
- Heavy-duty reinforced steel construction
- Baked powder coat finish, non off-gassing, non-reactive, solvent free
- Plated hardware
- Sealed, waterproof top
- Four levelers adjustable from inside
- Choose from 8 standard colors; custom colors available
- Slotted uprights to match runner configuration
- One 3" x 5" label holder per door
- Protective drawer bumper stop

DESCRIPTION	PART NO.	WIDTH	DEPTH	HEIGHT	WEIGHT
Cornell Style Cabinet (Capacity 11)	E10-CO	23"	21"	42 1/2"	210 lbs.
<i>Cornell Style Drawer</i>		19"	16 1/2"	3"	
USNM Style Cabinet (Capacity 11)	E10-US	23"	21"	42 1/2"	210 lbs.
<i>USNM Style Drawer</i>		18"	18"	2 7/8"	
Smithsonian Style Cabinet (Capacity 13)	E10-SM	23"	21"	42 1/2"	210 lbs.
<i>Smithsonian Style Drawer</i>		18"	17 7/8"	2 9/16"	
California Style Cabinet (Capacity 13)	E10-CA	23"	21"	42 1/2"	210 lbs.
<i>California Style Drawer</i>		19"	17"	2 1/2"	

**Cabinets do not include the drawers; sold separately**

Toll Free 1-800-803-1083

# model E40



**SOUTHWEST SOLUTIONS GROUP**  
*business organization systems*  
[www.southwestsolutions.com/museum](http://www.southwestsolutions.com/museum)  
 Toll Free 1-800-803-1083

DESCRIPTION	PART NO.	WIDTH	DEPTH	HEIGHT	WEIGHT
Cornell Style Cabinet (Capacity 24)	E40-CO	23"	21"	84"	270 lbs.
<i>Cornell Style Drawer</i>		19"	16 1/2"	3"	
USNM Style Cabinet (Capacity 24)	E40-US	23"	21"	84"	270 lbs.
<i>USNM Style Drawer</i>		18"	18"	2 7/8"	
Smithsonian Style Cabinet (Capacity 28)	E40-SM	23"	21"	84"	270 lbs.
<i>Smithsonian Style Drawer</i>		18"	17 7/8"	2 9/16"	
California Style Cabinet (Capacity 28)	E40-CA	23"	21"	84"	270 lbs.
<i>California Style Drawer</i>		19"	17"	2 1/2"	
<b>OPTIONS</b>					
Pull-out shelf for Cornell and California	EPOS-Coca	19"	18"	2"	25 lbs.
Pull-out shelf for USMN and Smithsonian	EPOS-Ussm	18"	18"	2"	25 lbs.

# model E60



DESCRIPTION	PART NO.	WIDTH	DEPTH	HEIGHT	WEIGHT
Cornell Style Cabinet (Capacity 48)	E60-CO	44"	21"	84"	470 lbs.
<i>Cornell Style Drawer</i>		19"	16 1/2"	3"	
USNM Style Cabinet (Capacity 48)	E60-US	44"	21"	84"	470 lbs.
<i>USNM Style Drawer</i>		18"	18"	2 7/8"	
Smithsonian Style Cabinet (Capacity 56)	E60-SM	44"	21"	84"	470 lbs.
<i>Smithsonian Style Drawer</i>		18"	17 7/8"	2 9/16"	
California Style Cabinet (Capacity 56)	E60-CA	44"	21"	84"	470 lbs.
<i>California Style Drawer</i>		19"	17"	2 1/2"	
<b>OPTIONS</b>					
Pull-out shelf for Cornell and California	EPOS-Coca	19"	18"	2"	25 lbs.
Pull-out shelf for USMN and Smithsonian	EPOS-Ussm	18"	18"	2"	25 lbs.

# Herbarium Storage Cabinets

## model H10



Includes 12 compartments  
(each 12<sup>1</sup>/<sub>2</sub>" x 17<sup>3</sup>/<sub>4</sub>" x 5<sup>13</sup>/<sub>16</sub>" )

## H-Series Standard Features

- Lift-off reinforced doors, each door seals and operates independently
- Three-point latching system
- Lever-Ease recessed full lever handles, with key lock
- Vanguard closed-cell pure silicone gasket, mechanically held in place
- Heavy-duty reinforced steel construction
- Baked powder coat finish, non off-gassing, non-reactive, solvent free
- Plated hardware
- Sealed, waterproof top
- Four levelers adjustable from inside
- Choose from 8 standard colors; custom colors available
- Space in front and rear of shelf allows for air flow
- One 3" x 5" label holder per door

DESCRIPTION	PART NO.	WIDTH	DEPTH	HEIGHT	WEIGHT
H10 Cabinet	H10	28 <sup>5</sup> / <sub>16</sub> "	19 <sup>1</sup> / <sub>2</sub> "	42 <sup>1</sup> / <sub>2</sub> "	170 lbs.
OPTIONS					WEIGHT
Magnetic Fumigant Pocket (black)	MFP-040				1 lb.



# model H20



Includes 24 compartments  
(each 12<sup>1</sup>/<sub>2</sub>" x 17<sup>3</sup>/<sub>4</sub>" x 5<sup>13</sup>/<sub>16</sub>" )



**SOUTHWEST SOLUTIONS GROUP**

*business organization systems*

[www.southwestsolutions.com/museum](http://www.southwestsolutions.com/museum)

Toll Free 1-800-803-1083

DESCRIPTION	PART NO.	WIDTH	DEPTH	HEIGHT	WEIGHT
H20 Cabinet	H20	55 <sup>3</sup> / <sub>32</sub> "	19 <sup>1</sup> / <sub>2</sub> "	42 <sup>1</sup> / <sub>2</sub> "	291 lbs.
<b>OPTIONS</b>					
Magnetic Fumigant Pocket (black)	MFP-040				1 lb.

# model H40



Includes 26 compartments  
(each 12<sup>1</sup>/<sub>2</sub>" x 17<sup>3</sup>/<sub>4</sub>" x 5<sup>13</sup>/<sub>16</sub>" )

DESCRIPTION	PART NO.	WIDTH	DEPTH	HEIGHT	WEIGHT
H40 Cabinet with right hand swing door	H40-RH	28 <sup>5</sup> / <sub>16</sub> "	19 <sup>1</sup> / <sub>2</sub> "	84"	305 lbs.
<i>H40 Cabinet with (1) work shelf installed</i>	H40-RH1WS	28 <sup>5</sup> / <sub>16</sub> "	19 <sup>1</sup> / <sub>2</sub> "	84"	315 lbs.
H40 Cabinet with left hand swing door	H40-LH	28 <sup>5</sup> / <sub>16</sub> "	19 <sup>1</sup> / <sub>2</sub> "	84"	305 lbs.
<i>H40 Cabinet with (1) work shelf installed</i>	H40-LH1WS	28 <sup>5</sup> / <sub>16</sub> "	19 <sup>1</sup> / <sub>2</sub> "	84"	315 lbs.
<b>OPTIONS</b>					
Magnetic Fumigant Pocket (black)	MFP-040				1 lb.
Removable Sanitary Pallet Base	H40RSPB	28 <sup>5</sup> / <sub>16</sub> "	19 <sup>1</sup> / <sub>2</sub> "	4 <sup>1</sup> / <sub>2</sub> "	25 lbs.

Toll Free 1-800-803-1083

# model H60



Includes 52 compartments  
(each 12<sup>1</sup>/<sub>2</sub>" x 17<sup>3</sup>/<sub>4</sub>" x 5<sup>13</sup>/<sub>16</sub>" )



Option for work shelves



**SOUTHWEST SOLUTIONS GROUP**  
business organization systems  
[www.southwestsolutions.com/museum](http://www.southwestsolutions.com/museum)  
Toll Free 1-800-803-1083

DESCRIPTION	PART NO.	WIDTH	DEPTH	HEIGHT	WEIGHT
H60 Cabinet	H60	55 <sup>3</sup> / <sub>32</sub> "	19 <sup>1</sup> / <sub>2</sub> "	84"	560 lbs.
<i>H60 Cabinet with 2 workshelves</i>	H60-2WS	55 <sup>3</sup> / <sub>32</sub> "	19 <sup>1</sup> / <sub>2</sub> "	84"	580 lbs.
OPTIONS					
Magnetic Fumigant Pocket (black)	MFP-040				1 lb.
Removable Sanitary Pallet Base	H60RSPB	55 <sup>3</sup> / <sub>32</sub> "	19 <sup>1</sup> / <sub>2</sub> "	4 <sup>1</sup> / <sub>2</sub> "	32 lbs.

# model M40DRY



- Adjustable control heater  
5120/2560 BTUH  
1500/750 watts-120 volts  
12.5/6.2 Amps AC
- Overheat protection and thermal protectors
- Heater element "ON" indicator/fan "ON" indicator
- Auto reset
- Temperature indicator degree high-130 plus; relative to content density
- Four perforated air vents-2 intakes and 2 exhausts;  
Upward air movement

DESCRIPTION	PART NO.	WIDTH	DEPTH	HEIGHT	WEIGHT
M40DRY cabinet with 5 perforated shelves adjustable in height one-inch centers	M40DRY	29"	32"	84"	375 lbs.
OPTIONS					
Magnetic Fumigant Pocket (black)	MFP-040				1 lb.

# Carts

## Transfer Cart



The transfer cart is designed to help move the collection from one building to the next or interchanging within the collection area.

## Herbarium Cart



Two-sided herbarium carts for the curatorial convenience of moving your collections with ease.

## Utility Cart



A specially designed work cart for curatorial convenience and assistance. Top can be inverted (as shown) or tray style like bottom shelf.

# Fluid Collections Tank

Toll Free 1-800-803-1083

## Custom-Size Tanks for Fluid Collections—Stainless Steel



- The electropolish finish looks great and removes any contamination and weld discoloration that will occur during the manufacturing process.
- Choose tank sizes to fit your collection
- Glass Bead finish available

Available dimensions:  
Height to 36"  
Width to 36"  
Length to 60"

- Tanks are made of premium 316L stainless steel construction
- All inside tank seams are liquid tight continuous TIG welded
- The tanks outer edge is reinforced to provide added strength and latch mounting.
- Stainless steel fold down handles. Four on the tank and two on the lid for easy handling.
- Six stainless steel draw latches and hard ware. Designed to be easily replaced if necessary.
- Designed with a double closed-cell Nitrile Sponge Rubber Gasket System.
- One gasket on the lid and one gasket on the tank for a better seal and added protection against the environment
- Lid has a splash shield to reduce liquids from splashing onto the gasket material and floor.
- 3 x 5 stainless steel card holder for easy identification
- All tanks are tested – liquid tight.

# Clothing and Textile Storage-Custom



**Costume  
&  
Clothing  
Storage**



**Rolled Textile  
&  
Rug Storage**

# Till Storage-Custom

**Art Storage Systems**



Optional Tambour Door



Counter Height Till Cabinet



# Storage for Artwork, Negatives, Flats, Sheets, and Prints

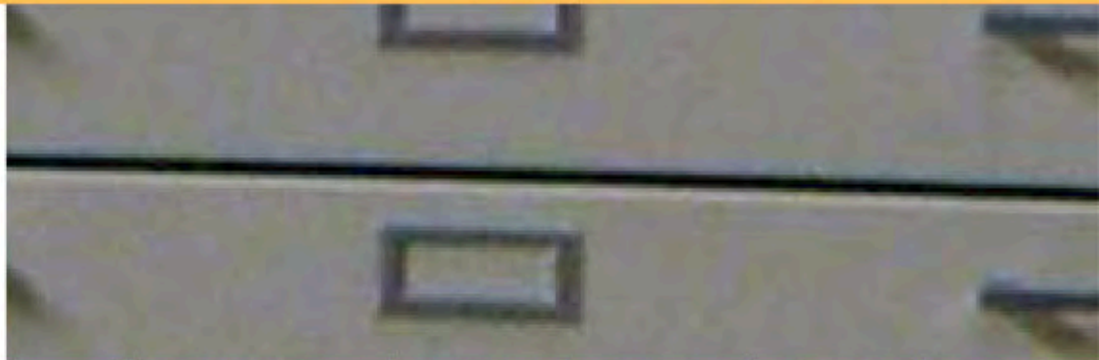
WORKROOM

## Standard Features

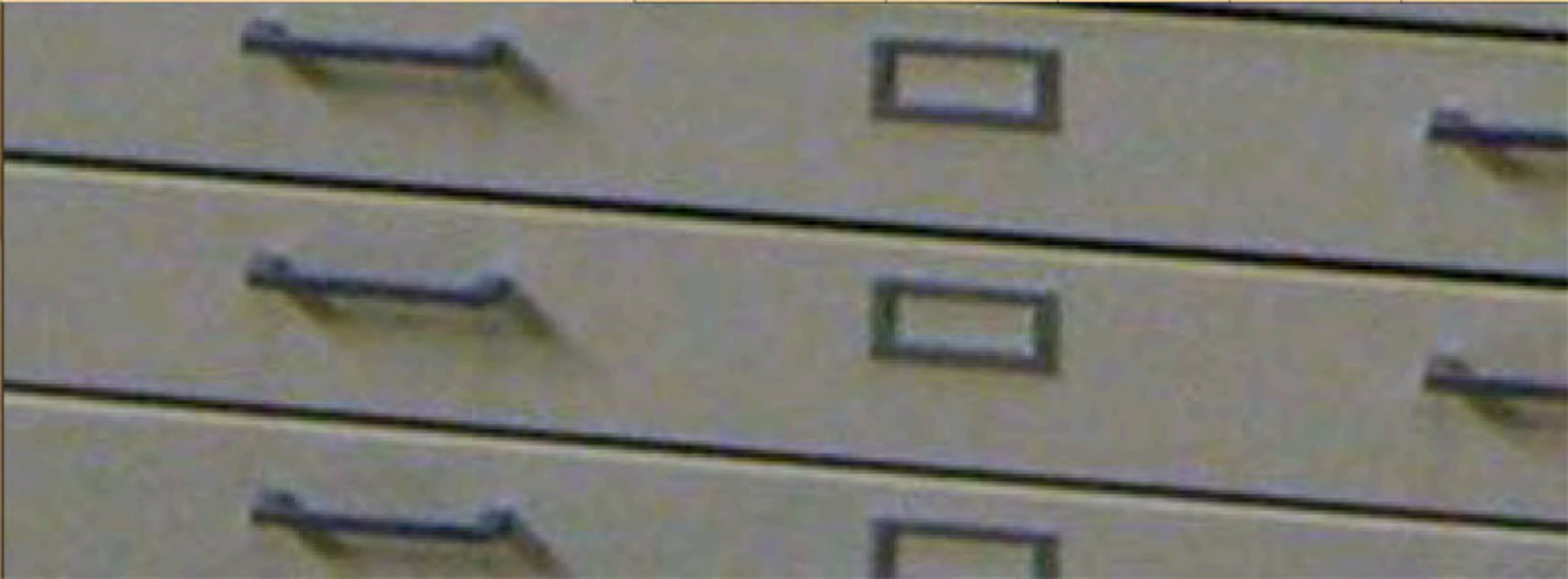
- Heavy duty reinforced steel construction
- Baked powder coat finish, non off-gassing, non-reactive, solvent free
- Sealed, waterproof top
- Plated hardware
- One 2" x 4" label holder per door
- Two pulls per drawer
- 3/4 extension, Roller Bearing Suspension (200 lbs. capacity)
- Five drawers per unit
- Designed to stack
- Choose from 8 standard colors; custom colors available



\*Custom Cabinet Shown



DESCRIPTION	PART NO.	WIDTH	DEPTH	HEIGHT	WEIGHT
35 X 30 CABINET WITH 5 DRAWERS INSTALLED	FFS-353018	35 1/8"	30"	18"	190 lbs.
<i>Drawer Dimensions</i>		30 23/32"	26 1/2"	2"	
BASE FOR 35 X 30	MAB-353007	35 1/8"	27"	7"	32 lbs.
42 X 30 CABINET WITH 5 DRAWERS INSTALLED	FFS-423018	42 1/8"	30"	18"	210 lbs.
<i>Drawer Dimensions</i>		37 23/32"	26 1/2"	2"	
BASE FOR 42 X 30	MAB-423007	42 1/8"	27"	18"	38 lbs.
48 X 37 CABINET WITH 5 DRAWERS INSTALLED	FFS-483718	48 1/8"	37"	19"	290 lbs.
<i>Drawer Dimensions</i>		43 23/32"	33 1/2"	2"	
BASE FOR 48 X 37	MAB-483707	48 1/8"	34"	7"	48 lbs.
55 X 43 CABINET WITH 5 DRAWERS INSTALLED	FFS-554318	55 1/8"	43"	18"	390 lbs.
<i>Drawer Dimensions</i>		50 23/32"	39 1/2"	2"	
BASE FOR 55 X 43	MAB-554307	55 1/8"	40"	7"	58 lbs.
59 X 47 CABINET WITH 5 DRAWERS INSTALLED	FFS-594718	59 1/8"	47"	18"	450 lbs.
<i>Drawer Dimensions</i>		54 23/32"	43 1/2"	2"	
BASE FOR 59 X 47	MAB-594707	59 1/8"	44"	7"	68 lbs.
69 X 55 CABINET WITH 5 DRAWERS INSTALLED	FFS-695518	69 1/8"	55"	18"	575 lbs.
<i>Drawer Dimensions</i>		64 23/32"	51 1/2"	2"	
BASE FOR 69 X 55	MAB-695507	69 1/8"	52"	7"	80 lbs.
79 X 49 CABINET WITH 5 DRAWERS INSTALLED	FFS-794918	79 1/8"	49"	18"	705 lbs.
<i>Drawer Dimensions</i>		74 23/32"	45 1/2"	2"	
BASE FOR 79 X 49	MAB-794907	79 1/8"	46"	7"	95 lbs.



## model FF4



DESCRIPTION	PART NO.	WIDTH	DEPTH	HEIGHT	WEIGHT
FF4 Cabinet w/4 (3") drawers installed	FF4	55 1/4"	44 1/2"	19"	450 lbs.
FF4L Cabinet w/4 (3") locking drawers installed	FF4L	55 1/4"	44 1/2"	19"	450 lbs.
<i>Drawer Inside Dimensions</i>		50 3/16"	41 15/16"	3"	
OPTIONS					
Recessed Base	FFRB	55 1/4"	41 1/2"	3"	37 lbs.
Dolly Base w/4 Locking Casters	FFDBLC	55 1/4"	44 1/2"	6"	110 lbs.

## model FF4W



model shown is FF4

DESCRIPTION	PART NO.	WIDTH	DEPTH	HEIGHT	WEIGHT
FF4W Cabinet w/4 (3") drawers installed	FF4W	92 1/4"	62 1/2"	19"	950 lbs.
FF4WL Cabinet w/4 (3") locking drawers installed	FF4WL	92 1/4"	62 1/2"	19"	950 lbs.
<i>Drawer Inside Dimensions</i>		87	60 1/8"	3"	
OPTIONS					
Recessed Base	FFWRB	92 1/4"	59 1/2"	3"	51 lbs.
Dolly Base w/4 Locking Casters	FFWDBLC	92 1/4"	62 1/2"	6"	155 lbs.

## model FF6



DESCRIPTION	PART NO.	WIDTH	DEPTH	HEIGHT	WEIGHT
FF6 Cabinet w/6 (3") drawers installed	FF6	55 1/4"	44 1/2"	26 7/16"	610 lbs.
FF6L Cabinet w/6 (3") locking drawers installed	FF6L	55 1/4"	44 1/2"	26 7/16"	610 lbs.
<i>Drawer Inside Dimensions</i>		50 3/16"	41 15/16"	3"	
OPTIONS					
Recessed Base	FFRB	55 1/4"	41 1/2"	3"	37 lbs.
Dolly Base w/4 Locking Casters	FFDBLC	55 1/4"	44 1/2"	6"	110 lbs.



Print, drawing and photograph storage solution to accommodate 3 different size solander boxes.

Fixed angles and pull out shelves for ease of handling. Options include a pull out workshelf.

## Nitrates-Custom



Product description:

This is a special insulated shelving cabinet designed in accordance with established requirements for the storage of Nitrate film in roll or sheet form. The various models provide the correct clearances for standard can sizes, allowing the gases created from film decomposition to escape. The cabinet construction restricts the transfer of heat should a film reach a level of instability, creating self ignition.

Purpose:

To be used as part of a preservation system, to restrict a fire from spreading to other compartments. The rest of the system compliance requires a fire proof vault, temperature controlled venting and fire suppression. The system only aids in stabilization and can not prevent a fire due to the chemical make up of the film.

Certification:

This shelving has been tested and approved by the government.

## Conservation Lab Cabinet-Custom



Bi-fold Door Conservation Lab Cabinet

This cabinet allows for the storage of objects that need to be housed in drawers, shelves or objects that need to be rolled.

Cabinets can be configured to suit any type of collection.



**SOUTHWEST SOLUTIONS GROUP**

*business organization systems*

[www.southwestsolutions.com/museum](http://www.southwestsolutions.com/museum)

Toll Free 1-800-803-1083



# Art, Historical and Natural Storage Cabinets

## Standard Features

- Lever-Ease recessed full lever handles, with key lock
- Vanguard closed cell pure silicone gasket, mechanically held in place
- Heavy-duty reinforced steel construction
- Baked powder coat finish, non-off gassing, non-reactive, solvent free
- Sealed, waterproof top
- Plated hardware
- One 3"x 5" label holder per door
- Choose from 8 standard colors; custom colors available

## model M10



- One lift-off reinforced door
- Three-point latching system
- EZ Glide\* Track System with low-friction high-slip coating, in D-499 Glacier White

Cabinet dimensions shown are exterior.

Drawer dimensions shown are interior.

DESCRIPTION	PART NO.	WIDTH	DEPTH	HEIGHT	WEIGHT
M10 Cabinet	M10	28 7/8"	40 1/4"	39 1/2"	210 lbs.
M10 Cabinet with vent	M10V	28 7/8"	40 1/4"	39 1/2"	211 lbs.
<b>OPTIONS</b>					
Removable Sanitary Pallet Base	M10RSPB	28 7/8"	40 1/4"	4 1/2"	36 lbs.
Dolly Base w/4 Locking Casters	M10DBLC	28 7/8"	40 1/4"	6"	92 lbs.
Magnetic Fumigant Pocket (black)	MFP-040				1 lb.
*EZ Glide 1" high drawer, half-width (16 maximum)	MHW2D	23 7/8"	36"	1 1/2"	15 lbs.
*EZ Glide 2" high drawer, half-width (10 maximum)	MHW3D	23 7/8"	36"	2 1/2"	16 lbs.
*EZ Glide 3" high drawer, half-width (8 maximum)	MHW4D	23 7/8"	36"	3 1/2"	17 lbs.

# model M20

Toll Free 1-800-803-1083



- Two lift-off reinforced doors, each door operates and is sealed independently
- Three-point latching system
- Four levelers, adjustable from inside
- EZ Glide\* Track System with low-friction high-slip coating, in D-499 Glacier White

DESCRIPTION	PART NO.	WIDTH	DEPTH	HEIGHT	WEIGHT
M20 Cabinet w/adjustable vents	M20-V	57"	40 1/4"	39 1/2"	317 lbs.
M20 Cabinet w/o vents	M20	57"	40 1/4"	39 1/2"	318 lbs.

## OPTIONS

Removable Sanitary Pallet Base	M20RSPB	57"	40 1/4"	4 1/2"	46 lbs.
Dolly Base w/4 Locking Casters	M20DBLC	57"	40 1/4"	6"	115 lbs.
Magnetic Fumigant Pocket (black)	MFP-040				1 lb.
Removable Center Divider	M20EZRCDD	1"	37 1/2"	32 3/4"	82 lbs.
*EZ Glide 1" high drawer, full-width (16 maximum)	M20FW2D	52"	36"	1 1/2"	29 lbs.
*EZ Glide 1" high drawer, half-width (32 maximum)	MHW2D	23 7/8"	36"	1 1/2"	15 lbs.
*EZ Glide 2" high drawer, full-width (10 maximum)	MF20FW3D	52"	36"	2 1/2"	31 lbs.
*EZ Glide 2" high drawer, half-width (20 maximum)	MHW3D	23 7/8"	36"	2 1/2"	16 lbs.
*EZ Glide 3" high drawer, full-width (8 maximum)	M20FW4D	52"	36"	3 1/2"	33 lbs.
*EZ Glide 3" high drawer, half-width (16 maximum)	MHW4D	23 7/8"	36"	3 1/2"	17 lbs.

\* EZ Glide Track System denotes non-ball bearing tray.

# model M22



- Two lift-off reinforced doors
- Three-point latching system
- Four levelers, adjustable from inside
- EZ Glide\* Track System with low-friction high-slip coating, in D-499 Glacier White

DESCRIPTION	PART NO.	WIDTH	DEPTH	HEIGHT	WEIGHT
M22 Cabinet w/adjustable vents	M22-V	49 1/4"	30 1/2"	47 3/4"	251 lbs.
M20 Cabinet w/o vents	M22	49 1/4"	30 1/2"	47 3/4"	250 lbs.

## OPTIONS

Removable Sanitary Pallet Base	M22RSPB	49 1/4"	30 1/2"	4 1/2"	41 lbs.
Dolly Base w/4 Locking Casters	M22DBLC	49 1/4"	30 1/2"	6"	85 lbs.
Magnetic Fumigant Pocket (black)	MFP-040				1 lb.
Removable Center Divider	M22EZRCDD	1"	26 1/4"	41"	69 lbs.
*EZ Glide 1" high drawer, full-width (20 maximum)	M22FW2D	44 1/4"	26 1/4"	1 1/2"	20 lbs.
*EZ Glide 1" high drawer, half-width (40 maximum)	M22HW2D	21"	26 1/4"	1 1/2"	10 lbs.
*EZ Glide 2" high drawer, full-width (13 maximum)	MF22FW3D	44 1/4"	26 1/4"	2 1/2"	22 lbs.
*EZ Glide 2" high drawer, half-width (26 maximum)	M22HW3D	21"	26 1/4"	2 1/2"	11 lbs.
*EZ Glide 3" high drawer, full-width (10 maximum)	M22FW4D	44 1/4"	26 1/4"	3 1/2"	24 lbs.
*EZ Glide 3" high drawer, half-width (20 maximum)	M22HW4D	21"	26 1/4"	3 1/2"	12 lbs.

\* EZ Glide Track System denotes non-ball bearing tray.



- Two lift-off reinforced doors
- Three-point latching system
- Four levelers, adjustable from inside
- Slotted uprights with 1" spacing

Cabinet dimensions shown are exterior.

Drawer dimensions shown are interior.

DESCRIPTION	PART NO.	WIDTH	DEPTH	HEIGHT	WEIGHT
M30 Cabinet w/solid metal doors	M30-SD	58"	32"	39 1/2"	220 lbs.
M30 Cabinet w/solid metal doors w/vents	M30-SDV	58"	32"	39 1/2"	221 lbs.
M30 Cabinet w/metal frame glass doors	M30-GD	58"	32"	39 1/2"	270 lbs.
M30 Cabinet w/metal frame glass doors w/vents	M30-GDV	58"	32"	39 1/2"	271 lbs.
<b>OPTIONS</b>					
Removable Sanitary Pallet Base	MRSPB	58"	32"	4 1/2"	45 lbs.
Dolly base w/4 locking casters	MDBLC	58"	32"	6"	100 lbs.
Magnetic Fumigant Pocket (black)	MFP-040				1 lb.
Removable Center Divider	M30RCD	1"	30"	32 3/4"	36 lbs.
<b>SHELVES – ADJUSTABLE WITH UNIVERSAL BAYONET MOUNT</b>					
Full-width shelf (400 lbs. capacity)	MFWS400	54 1/2"	29 1/4"	1"	40 lbs.
Half-width shelf (400 lbs. capacity)	MHWS400	26 1/2"	29 1/4"	1"	22 lbs.
Full-width, heavy duty shelf (1000 lbs. capacity)	MFWS1000	54 1/2"	29 1/4"	1"	49 lbs.
<b>SHELVES – FULL EXTENSION+</b>					
Full-width shelf (100 lbs. capacity)	MFWS100	51 5/8"	28 1/4"	3/4"	50 lbs.
Half-width shelf (100 lbs. capacity)	MHWS100	23 3/4"	28 1/4"	3/4"	38 lbs.
Full-width shelf (250 lbs. capacity)	MFWS250	51 1/4"	28 1/4"	3/4"	66 lbs.
Half-width shelf (250 lbs. capacity)	MHWS250	23 3/8"	28 1/4"	3/4"	50 lbs.
Full-width shelf (500 lbs. capacity)	MFWS500	51 1/4"	28 1/4"	3/4"	66 lbs.
Half-width shelf (500 lbs. capacity)	MHWS500	23 3/8"	28 1/4"	3/4"	50 lbs.
<b>DRAWERS (INCLUDING MOUNTS)</b>		<b>DRAWER - 100 LBS. CAPACITY</b>			
1 3/4" high drawer, full-width (16 maximum)	M2FWD100	51 1/2"	27 9/16"	1 3/8"	44 lbs.
1 3/4" high drawer, half-width (32 maximum)	M2HWD100	23 3/8"	27 9/16"	1 3/8"	34 lbs.
2 3/4" high drawer, full-width (10 maximum)	M3FWD100	51 1/2"	27 9/16"	2 3/8"	47 lbs.
2 3/4" high drawer, half-width (20 maximum)	M3HWD100	23 3/8"	27 9/16"	2 3/8"	37 lbs.
3 3/4" high drawer, full-width (8 maximum)	M4FWD100	51 1/2"	27 9/16"	3 3/8"	48 lbs.
3 3/4" high drawer, half-width (16 maximum)	M4HWD100	23 3/8"	27 9/16"	3 3/8"	38 lbs.
4 3/4" high drawer, full-width (6 maximum)	M5FWD100	51 1/2"	27 9/16"	4 3/8"	51 lbs.
4 3/4" high drawer, half-width (12 maximum)	M5HWD100	23 3/8"	27 9/16"	4 3/8"	41 lbs.
6 3/4" high drawer, full-width (4 maximum)	M7FWD100	51 1/2"	27 9/16"	6 3/8"	55 lbs.
6 3/4" high drawer, half-width (8 maximum)	M7HWD100	23 3/8"	27 9/16"	6 3/8"	45 lbs.
8 3/4" high drawer, full-width (3 maximum)	M9FWD100	51 1/2"	27 9/16"	8 3/8"	61 lbs.
8 3/4" high drawer, half-width (6 maximum)	M9HWD100	23 3/8"	27 9/16"	8 3/8"	51 lbs.
Rolled textile, open bottom drawer w/mounts	MROTEXT	49 7/8"	27"	4 3/4"	57 lbs.

+ Overall height of shelf including track is 3/4"

Drawers include full-extension, full suspension ball-bearing slides. Slides attach to cabinet with bayonet mounts and adjust vertically without tools

<b>DRAWERS (INCLUDING MOUNTS)</b>		<b>DRAWER - 250 LBS. CAPACITY</b>				
3 3/4" high drawer, full-width (8 maximum)	M4FWD250	51"	27 9/16"	3 3/8"	63 lbs.	
3 3/4" high drawer, half-width (16 maximum)	M4HWD250	22 7/8"	27 9/16"	3 3/8"	53 lbs.	
4 3/4" high drawer, full-width (6 maximum)	M5FWD250	51"	27 9/16"	4 3/8"	66 lbs.	
4 3/4" high drawer, half-width (12 maximum)	M5HWD250	22 7/8"	27 9/16"	4 3/8"	56 lbs.	
6 3/4" high drawer, full-width (4 maximum)	M7FWD250	51"	27 9/16"	6 3/8"	70 lbs.	
6 3/4" high drawer, half-width (8 maximum)	M7HWD250	22 7/8"	27 9/16"	6 3/8"	60 lbs.	
8 3/4" high drawer, full-width (3 maximum)	M9FWD250	51"	27 9/16"	8 3/8"	76 lbs.	
8 3/4" high drawer, half-width (6 maximum)	M9HWD250	22 7/8"	27 9/16"	8 3/8"	66 lbs.	
<b>DRAWERS (INCLUDING MOUNTS)</b>		<b>DRAWER - 500 LBS. CAPACITY</b>				
3 3/4" high drawer, full-width (8 maximum)	M4FWD500	51"	27 9/16"	3 3/8"	63 lbs.	
3 3/4" high drawer, half-width (16 maximum)	M4HWD500	22 7/8"	27 9/16"	3 3/8"	53 lbs.	
4 3/4" high drawer, full-width (6 maximum)	M5FWD500	51"	27 9/16"	4 3/8"	66 lbs.	
4 3/4" high drawer, half-width (12 maximum)	M5HWD500	22 7/8"	27 9/16"	4 3/8"	56 lbs.	
6 3/4" high drawer, full-width (4 maximum)	M7FWD500	51"	27 9/16"	6 3/8"	70 lbs.	
6 3/4" high drawer, half-width (8 maximum)	M7HWD500	22 7/8"	27 9/16"	6 3/8"	60 lbs.	
8 3/4" high drawer, full-width (3 maximum)	M9FWD500	51"	27 9/16"	8 3/8"	76 lbs.	
8 3/4" high drawer, half-width (6 maximum)	M9HWD500	22 7/8"	27 9/16"	8 3/8"	66 lbs.	
<b>OPTIONS</b>						
<i>EZ Glide</i> full-height, fixed-runner panel system, with protective drawer bumpers	MEZRUNHH	5/8"	30"	31 7/8"	55 lbs.	
<b>*EZ GLIDE DRAWERS</b>						
Removable center divider	M30EZRCD	1"	29 1/2"	31 3/4"	60 lbs.	
1 3/4" high drawer, full-width (16 maximum)	MEZ2FW	53"	27 3/4"	1 1/2"	25 lbs.	
1 3/4" high drawer, half-width (32 maximum)	MEZ2HW	24 3/8"	27 3/4"	1 1/2"	15 lbs.	
2 3/4" high drawer, full-width (10 maximum)	MEZ3FW	53"	27 3/4"	2 1/2"	26 lbs.	
2 3/4" high drawer, half-width (20 maximum)	MEZ3HW	24 3/8"	27 3/4"	2 1/2"	16 lbs.	
3 3/4" high drawer, full-width (8 maximum)	MEZ4FW	53"	27 3/4"	3 1/2"	28 lbs.	
3 3/4" high drawer, half-width (16 maximum)	MEZ4HW	24 3/8"	27 3/4"	3 1/2"	17 lbs.	
<b>OPTIONS</b>						
<b>ADDITIONAL ITEMS</b>						
Textile Tubes	M60TEXTUB	49 7/8"	1"	1"	2.5 lbs.	
Full-width Reference Shelf	MFWREFSH	54"	29 1/4"	2"	40 lbs.	
Half-width Reference Shelf	MHWREFSH	26 1/8"	29 1/4"	2"	25 lbs.	

Drawer tracks are lined with a low-friction, high-slip coating, in D-499 Glacier White.



- Two lift-off reinforced doors
- Three-point latching system
- Four levelers, adjustable from inside
- Slotted uprights with 1" spacing

Cabinet dimensions shown are exterior.

Drawer dimensions shown are interior.

DESCRIPTION	PART NO.	WIDTH	DEPTH	HEIGHT	WEIGHT
M30 Cabinet w/solid metal doors	M30-SD	58"	32"	39 1/2"	220 lbs.
M30 Cabinet w/solid metal doors w/vents	M30-SDV	58"	32"	39 1/2"	221 lbs.
M30 Cabinet w/metal frame glass doors	M30-GD	58"	32"	39 1/2"	270 lbs.
M30 Cabinet w/metal frame glass doors w/vents	M30-GDV	58"	32"	39 1/2"	271 lbs.
<b>OPTIONS</b>					
Removable Sanitary Pallet Base	MRSPB	58"	32"	4 1/2"	45 lbs.
Dolly base w/4 locking casters	MDBLC	58"	32"	6"	100 lbs.
Magnetic Fumigant Pocket (black)	MFP-040				1 lb.
Removable Center Divider	M30RCD	1"	30"	32 3/4"	36 lbs.
<b>SHELVES – ADJUSTABLE WITH UNIVERSAL BAYONET MOUNT</b>					
Full-width shelf (400 lbs. capacity)	MFWS400	54 1/2"	29 1/4"	1"	40 lbs.
Half-width shelf (400 lbs. capacity)	MHWS400	26 1/2"	29 1/4"	1"	22 lbs.
Full-width, heavy duty shelf (1000 lbs. capacity)	MFWS1000	54 1/2"	29 1/4"	1"	49 lbs.
<b>SHELVES – FULL EXTENSION+</b>					
Full-width shelf (100 lbs. capacity)	MFWS100	51 5/8"	28 1/4"	3/4"	50 lbs.
Half-width shelf (100 lbs. capacity)	MHWS100	23 3/4"	28 1/4"	3/4"	38 lbs.
Full-width shelf (250 lbs. capacity)	MFWS250	51 1/4"	28 1/4"	3/4"	66 lbs.
Half-width shelf (250 lbs. capacity)	MHWS250	23 3/8"	28 1/4"	3/4"	50 lbs.
Full-width shelf (500 lbs. capacity)	MFWS500	51 1/4"	28 1/4"	3/4"	66 lbs.
Half-width shelf (500 lbs. capacity)	MHWS500	23 3/8"	28 1/4"	3/4"	50 lbs.
<b>DRAWERS (INCLUDING MOUNTS)</b>		<b>DRAWER - 100 LBS. CAPACITY</b>			
1 3/4" high drawer, full-width (16 maximum)	M2FWD100	51 1/2"	27 9/16"	1 3/8"	44 lbs.
1 3/4" high drawer, half-width (32 maximum)	M2HWD100	23 3/8"	27 9/16"	1 3/8"	34 lbs.
2 3/4" high drawer, full-width (10 maximum)	M3FWD100	51 1/2"	27 9/16"	2 3/8"	47 lbs.
2 3/4" high drawer, half-width (20 maximum)	M3HWD100	23 3/8"	27 9/16"	2 3/8"	37 lbs.
3 3/4" high drawer, full-width (8 maximum)	M4FWD100	51 1/2"	27 9/16"	3 3/8"	48 lbs.
3 3/4" high drawer, half-width (16 maximum)	M4HWD100	23 3/8"	27 9/16"	3 3/8"	38 lbs.
4 3/4" high drawer, full-width (6 maximum)	M5FWD100	51 1/2"	27 9/16"	4 3/8"	51 lbs.
4 3/4" high drawer, half-width (12 maximum)	M5HWD100	23 3/8"	27 9/16"	4 3/8"	41 lbs.
6 3/4" high drawer, full-width (4 maximum)	M7FWD100	51 1/2"	27 9/16"	6 3/8"	55 lbs.
6 3/4" high drawer, half-width (8 maximum)	M7HWD100	23 3/8"	27 9/16"	6 3/8"	45 lbs.
8 3/4" high drawer, full-width (3 maximum)	M9FWD100	51 1/2"	27 9/16"	8 3/8"	61 lbs.
8 3/4" high drawer, half-width (6 maximum)	M9HWD100	23 3/8"	27 9/16"	8 3/8"	51 lbs.
Rolled textile, open bottom drawer w/mounts	MROTEXT	49 7/8"	27"	4 3/4"	57 lbs.

+ Overall height of shelf including track is 3/4"

Drawers include full-extension, full suspension ball-bearing slides. Slides attach to cabinet with bayonet mounts and adjust vertically without tools

<b>DRAWERS (INCLUDING MOUNTS)</b>		<b>DRAWER - 250 LBS. CAPACITY</b>				
3 3/4" high drawer, full-width (8 maximum)	M4FWD250	51"	27 9/16"	3 3/8"	63 lbs.	
3 3/4" high drawer, half-width (16 maximum)	M4HWD250	22 7/8"	27 9/16"	3 3/8"	53 lbs.	
4 3/4" high drawer, full-width (6 maximum)	M5FWD250	51"	27 9/16"	4 3/8"	66 lbs.	
4 3/4" high drawer, half-width (12 maximum)	M5HWD250	22 7/8"	27 9/16"	4 3/8"	56 lbs.	
6 3/4" high drawer, full-width (4 maximum)	M7FWD250	51"	27 9/16"	6 3/8"	70 lbs.	
6 3/4" high drawer, half-width (8 maximum)	M7HWD250	22 7/8"	27 9/16"	6 3/8"	60 lbs.	
8 3/4" high drawer, full-width (3 maximum)	M9FWD250	51"	27 9/16"	8 3/8"	76 lbs.	
8 3/4" high drawer, half-width (6 maximum)	M9HWD250	22 7/8"	27 9/16"	8 3/8"	66 lbs.	
<b>DRAWERS (INCLUDING MOUNTS)</b>		<b>DRAWER - 500 LBS. CAPACITY</b>				
3 3/4" high drawer, full-width (8 maximum)	M4FWD500	51"	27 9/16"	3 3/8"	63 lbs.	
3 3/4" high drawer, half-width (16 maximum)	M4HWD500	22 7/8"	27 9/16"	3 3/8"	53 lbs.	
4 3/4" high drawer, full-width (6 maximum)	M5FWD500	51"	27 9/16"	4 3/8"	66 lbs.	
4 3/4" high drawer, half-width (12 maximum)	M5HWD500	22 7/8"	27 9/16"	4 3/8"	56 lbs.	
6 3/4" high drawer, full-width (4 maximum)	M7FWD500	51"	27 9/16"	6 3/8"	70 lbs.	
6 3/4" high drawer, half-width (8 maximum)	M7HWD500	22 7/8"	27 9/16"	6 3/8"	60 lbs.	
8 3/4" high drawer, full-width (3 maximum)	M9FWD500	51"	27 9/16"	8 3/8"	76 lbs.	
8 3/4" high drawer, half-width (6 maximum)	M9HWD500	22 7/8"	27 9/16"	8 3/8"	66 lbs.	
<b>OPTIONS</b>						
<i>EZ Glide</i> full-height, fixed-runner panel system, with protective drawer bumpers	MEZRUNHH	5/8"	30"	31 7/8"	55 lbs.	
<b>*EZ GLIDE DRAWERS</b>						
Removable center divider	M30EZRCD	1"	29 1/2"	31 3/4"	60 lbs.	
1 3/4" high drawer, full-width (16 maximum)	MEZ2FW	53"	27 3/4"	1 1/2"	25 lbs.	
1 3/4" high drawer, half-width (32 maximum)	MEZ2HW	24 3/8"	27 3/4"	1 1/2"	15 lbs.	
2 3/4" high drawer, full-width (10 maximum)	MEZ3FW	53"	27 3/4"	2 1/2"	26 lbs.	
2 3/4" high drawer, half-width (20 maximum)	MEZ3HW	24 3/8"	27 3/4"	2 1/2"	16 lbs.	
3 3/4" high drawer, full-width (8 maximum)	MEZ4FW	53"	27 3/4"	3 1/2"	28 lbs.	
3 3/4" high drawer, half-width (16 maximum)	MEZ4HW	24 3/8"	27 3/4"	3 1/2"	17 lbs.	
<b>OPTIONS</b>						
<b>ADDITIONAL ITEMS</b>						
Textile Tubes	M60TEXTUB	49 7/8"	1"	1"	2.5 lbs.	
Full-width Reference Shelf	MFWREFSH	54"	29 1/4"	2"	40 lbs.	
Half-width Reference Shelf	MHWREFSH	26 1/8"	29 1/4"	2"	25 lbs.	

Drawer tracks are lined with a low-friction, high-slip coating, in D-499 Glacier White.



- One lift-off reinforced door
- Three-point latching system
- Four levelers, adjustable from inside
- Slotted uprights with 1" spacing

Cabinet dimensions shown are exterior.

Drawer dimensions shown are interior.

DESCRIPTION	PART NO.	WIDTH	DEPTH	HEIGHT	WEIGHT
M40 Cabinet w/solid metal doors	M40-SD	29"	32"	84"	260 lbs.
M40 Cabinet w/solid metal doors w/vents	M40-SDV	29"	32"	84"	261 lbs.
M40 Cabinet w/metal frame glass doors	M40-GD	29"	32"	84"	290 lbs.
M40 Cabinet w/metal frame glass doors w/vents	M40-GDV	29"	32"	84"	291 lbs.
<b>OPTIONS</b>					
Removable Sanitary Pallet Base	M40RSPB	29"	32"	4 1/2"	40 lbs.
Magnetic Fumigant Pocket (black)	MFP-040				1lb.
<b>SHELVES – ADJUSTABLE WITH UNIVERSAL BAYONET MOUNT</b>					
Full-width shelf (400 lbs. capacity)	M40FWS400	25 1/4"	29 1/4"	1"	22 lbs.
Full-width, heavy-duty shelf (1000 lbs. capacity)	M40FWS1000	25 1/4"	29 1/4"	1"	28 lbs.
<b>SHELVES – FULL EXTENSION +</b>					
Full-width shelf (100 lbs. capacity)	M40FWS100	22 5/8"	28 1/4"	3/4"	38 lbs.
Full-width shelf (250 lbs. capacity)	M40FWS250	22 1/4"	28 1/4"	3/4"	50 lbs.
Full-width shelf (500 lbs. capacity)	M40FWS500	22 1/4"	28 1/4"	3/4"	50 lbs.
<b>DRAWERS (INCLUDING MOUNTS)</b>		<b>DRAWER - 100 LBS. CAPACITY</b>			
1 3/4" high drawer, full-width (38 maximum)	M402FWD100	22 1/4"	27 9/16"	1 3/8"	34 lbs.
2 3/4" high drawer, full-width (25 maximum)	M403FWD100	22 1/4"	27 9/16"	2 3/8"	37 lbs.
3 3/4" high drawer, full-width (19 maximum)	M404FWD100	22 1/4"	27 9/16"	3 3/8"	38 lbs.
4 3/4" high drawer, full-width (15 maximum)	M405FWD100	22 1/4"	27 9/16"	4 3/8"	41 lbs.
6 3/4" high drawer, full-width (11 maximum)	M407FWD100	22 1/4"	27 9/16"	6 3/8"	45 lbs.
8 3/4" high drawer, full-width (8 maximum)	M409FWD100	22 1/4"	27 9/16"	8 3/8"	51 lbs.
<b>DRAWERS (INCLUDING MOUNTS)</b>		<b>DRAWER - 250 LBS. CAPACITY</b>			
3 3/4" high drawer, full-width (19 maximum)	M404FWD250	21 3/4"	27 9/16"	3 3/8"	53 lbs.
4 3/4" high drawer, full-width (15 maximum)	M405FWD250	21 3/4"	27 9/16"	4 3/8"	56 lbs.
6 3/4" high drawer, full-width (11 maximum)	M407FWD250	21 3/4"	27 9/16"	6 3/8"	60 lbs.
8 3/4" high drawer, full-width (8 maximum)	M409FWD250	21 3/4"	27 9/16"	8 3/8"	66 lbs.
<b>ADDITIONAL ITEMS</b>					
Art Frame Assembly, vertical, full-height	ARTFRA	1 1/2"	29"	70"	60 lbs.
Full-width Reference Shelf	MFWREFSH	54"	29 1/4"	2"	25 lbs.

+ Overall height of shelf including track is 3/4"

Drawers include full-extension, full suspension ball-bearing slides. Slides attach to cabinet with bayonet mounts and adjust vertically without tools.

DESCRIPTION	PART NO.	WIDTH	DEPTH	HEIGHT	WEIGHT
<b>DRAWERS (INCLUDING MOUNTS)</b>		<b>DRAWER - 500 LBS. CAPACITY</b>			
3 3/4" high drawer, full-width (19 maximum)	M404FWD500	21 3/4"	27 9/16"	3 3/8"	53 lbs.
4 3/4" high drawer, full-width (15 maximum)	M405FWD500	21 3/4"	27 9/16"	4 3/8"	56 lbs.
6 3/4" high drawer, full-width (11 maximum)	M407FWD500	21 3/4"	27 9/16"	6 3/8"	60 lbs.
8 3/4" high drawer, full-width (8 maximum)	M409FWD500	21 3/4"	27 9/16"	8 3/8"	66 lbs.

<b>OPTIONS</b>					
<i>EZ Glide</i> full-height fixed runner panel system, with protective drawer bumpers	MEZRUNFH	5/8"	30"	76 3/8"	110 lbs.
<b>*EZ GLIDE DRAWERS</b>					
1 3/4" high drawer, full-width (38 maximum)	M40EZ2FW	24"	27 3/4"	1 1/2"	14 lbs.
2 3/4" high drawer, full-width (25 maximum)	M40EZ3FW	24"	27 3/4"	2 1/2"	15 lbs.
3 3/4" high drawer, full-width (19 maximum)	M40EZ4FW	24"	27 3/4"	3 1/2"	16 lbs.

Options with \*EZ Glide Track System

Drawer tracks are lined with a low friction, high-slip coating, in D-499 Glacier White.



**SOUTHWEST SOLUTIONS GROUP**  
 business organization systems  
[www.southwestsolutions.com/museum](http://www.southwestsolutions.com/museum)  
 Toll Free 1-800-883-1003





- Two lift-off reinforced doors
- Three-point latching system
- Four levelers, adjustable from inside
- Slotted uprights with 1" spacing

Cabinet dimensions shown are exterior. Drawer dimensions shown are interior.

DESCRIPTION	PART NO.	WIDTH	DEPTH	HEIGHT	WEIGHT
M60 Cabinet w/solid metal doors	M60-SD	58"	32"	84"	325 lbs.
M60 Cabinet w/solid metal doors w/vents	M60-SDV	58"	32"	84"	326 lbs.
M60 Cabinet w/metal frame glass doors	M60-GD	58"	32"	84"	375 lbs.
M60 Cabinet w/metal frame glass doors w/vents	M60-GDV	58"	32"	84"	376 lbs.
<b>OPTIONS</b>					
Removable Sanitary Pallet Base	MRSPB	58"	32"	4 1/2"	45 lbs.
Dolly Base w/4 Locking Casters	MDBLC	58"	32"	6"	100 lbs.
Magnetic Fumigant Pocket (black)	MFP-040				1 lb.
Removable Center Divider, full-height	M60RCD	1"	30"	77 1/4"	80 lbs.
Removable Center Divider, half-height	MHHRCD	1"	30"	38 5/8"	40 lbs.
<b>SHELVES – ADJUSTABLE WITH UNIVERSAL BAYONET MOUNT</b>					
Full-width shelf (400 lbs. capacity)	MFWS400	54 1/2"	29 1/4"	1"	40 lbs.
Half-width shelf (400 lbs. capacity)	MHWS400	26 1/2"	29 1/4"	1"	22 lbs.
Full-width, heavy-duty shelf (1000 lbs. capacity)	MFWS1000	54 1/2"	29 1/4"	1"	49 lbs.
<b>SHELVES – FULL EXTENSION +</b>					
Full-width shelf (100 lbs. capacity)	MFWS100	51 5/8"	28 1/4"	3/4"	50 lbs.
Half-width shelf (100 lbs. capacity)	MHWS100	23 3/4"	28 1/4"	3/4"	38 lbs.
Full-width shelf (250 lbs. capacity)	MFWS250	51 1/4"	28 1/4"	3/4"	66 lbs.
Half-width shelf (250 lbs. capacity)	MHWS250	23 3/8"	28 1/4"	3/4"	50 lbs.
Full-width shelf (500 lbs. capacity)	MFWS500	51 1/4"	28 1/4"	3/4"	66 lbs.
Half-width shelf (500 lbs. capacity)	MHWS500	23 3/8"	28 1/4"	3/4"	50 lbs.
Weapons storage insert	M60WEAP	53"	18"	68"	94 lbs.
<b>DRAWERS (INCLUDING MOUNTS)      DRAWER - 100 LBS. CAPACITY</b>					
1 3/4" high drawer, full-width (38 maximum)	M2FWD100	51 1/2"	27 9/16"	1 3/8"	44 lbs.
1 3/4" high drawer, half-width (76 maximum)	M2HWD100	23 3/8"	27 9/16"	1 3/8"	34 lbs.
2 3/4" high drawer, full-width (25 maximum)	M3FWD100	51 1/2"	27 9/16"	2 3/8"	47 lbs.
2 3/4" high drawer, half-width (50 maximum)	M3HWD100	23 3/8"	27 9/16"	2 3/8"	37 lbs.
3 3/4" high drawer, full-width (19 maximum)	M4FWD100	51 1/2"	27 9/16"	3 3/8"	48 lbs.
3 3/4" high drawer, half-width (38 maximum)	M4HWD100	23 3/8"	27 9/16"	3 3/8"	38 lbs.
4 3/4" high drawer, full-width (15 maximum)	M5FWD100	51 1/2"	27 9/16"	4 3/8"	51 lbs.
4 3/4" high drawer, half-width (30 maximum)	M5HWD100	23 3/8"	27 9/16"	4 3/8"	41 lbs.
6 3/4" high drawer, full-width (11 maximum)	M7FWD100	51 1/2"	27 9/16"	6 3/8"	55 lbs.
6 3/4" high drawer, half-width (22 maximum)	M7HWD100	23 3/8"	27 9/16"	6 3/8"	45 lbs.

Drawers include full-extension, full suspension ball-bearing slides. Slides attach to cabinet with bayonet mounts and adjust vertically without tools.

8 3/4" high drawer, full-width (8 maximum)	M9FWD100	51 1/2"	27 9/16"	8 3/8"	61 lbs.
8 3/4" high drawer, half-width (16 maximum)	M9HWD100	23 3/8"	27 9/16"	8 3/8"	51 lbs.
Rolled Textile, open bottom drawer (15 maximum)	MROTEXT	49 7/8"	27"	4 3/4"	57 lbs.

**OPTIONS****ADDITIONAL ITEMS**

Textile Tubes	M60TEXTUB	49 7/8"	1"	1"	2.5 lbs.
Art Frame Assembly, vertical, full-height	ARTFRA	1 1/2"	29"	70"	60 lbs.
Full-width Reference Shelf	MFWREFSH	54"	29 1/4"	2"	40 lbs.
Half-width Reference Shelf	MHWREFSH	26 1/8"	29 1/4"	2"	25 lbs.

**DRAWERS (INCLUDING MOUNTS)****DRAWER - 250 LBS. CAPACITY**

3 3/4" high drawer, full-width (19 maximum)	M4FWD250	51"	27 9/16"	3 3/8"	63 lbs.
3 3/4" high drawer, half-width (38 maximum)	M4HWD250	22 7/8"	27 9/16"	3 3/8"	53 lbs.
4 3/4" high drawer, full-width (15 maximum)	M5FWD250	51"	27 9/16"	4 3/8"	66 lbs.
4 3/4" high drawer, half-width (30 maximum)	M5HWD250	22 7/8"	27 9/16"	4 3/8"	56 lbs.
6 3/4" high drawer, full-width (11 maximum)	M7FWD250	51"	27 9/16"	6 3/8"	70 lbs.
6 3/4" high drawer, half-width (22 maximum)	M7HWD250	22 7/8"	27 9/16"	6 3/8"	60 lbs.
8 3/4" high drawer, full-width (8 maximum)	M9FWD250	51"	27 9/16"	8 3/8"	76 lbs.
8 3/4" high drawer, half-width (16 maximum)	M9HWD250	22 7/8"	27 9/16"	8 3/8"	66 lbs.

**DRAWERS (INCLUDING MOUNTS)****DRAWER - 500 LBS. CAPACITY**

3 3/4" high drawer, full-width (19 maximum)	M4FWD500	51"	27 9/16"	3 3/8"	63 lbs.
3 3/4" high drawer, half-width (38 maximum)	M4HWD500	22 7/8"	27 9/16"	3 3/8"	53 lbs.
4 3/4" high drawer, full-width (15 maximum)	M5FWD500	51"	27 9/16"	4 3/8"	66 lbs.
4 3/4" high drawer, half-width (30 maximum)	M5HWD500	22 7/8"	27 9/16"	4 3/8"	56 lbs.
6 3/4" high drawer, full-width (11 maximum)	M7FWD500	51"	27 9/16"	6 3/8"	70 lbs.
6 3/4" high drawer, half-width (22 maximum)	M7HWD500	22 7/8"	27 9/16"	6 3/8"	60 lbs.
8 3/4" high drawer, full-width (8 maximum)	M9FWD500	51"	27 9/16"	8 3/8"	76 lbs.
8 3/4" high drawer, half-width (16 maximum)	M9HWD500	22 7/8"	27 9/16"	8 3/8"	66 lbs.

Options with \*EZ Glide Track System

Drawer tracks are lined with a low friction, high-slip coating, in D-499 Glacier White.

<i>EZ Glide</i> full-height, fixed-runner panel system, with protective drawer bumpers	M60EZRUNFH	5/8"	30"	76 3/8"	110 lbs.
<i>EZ Glide</i> half-height, fixed-runner panel system, with protective drawer bumpers	MEZRUNHH	5/8"	30"	31 7/8"	55 lbs.

**\*EZ GLIDE DRAWERS**

Removable center divider, full-height	M60EZRCDC	1"	29"	76 1/4"	120 lbs.
Removable center divider, half-height	M60HHEZRCDC	1"	29"	38"	60 lbs.
1 3/4" high drawer, full-width (38 maximum)	MEZ2FW	53"	27 3/4"	1 1/2"	25 lbs.
1 3/4" high drawer, half-width (76 maximum)	MEZ2HW	24 3/8"	27 3/4"	1 1/2"	15 lbs.
2 3/4" high drawer, full-width (25 maximum)	MEZ3FW	53"	27 3/4"	2 1/2"	26 lbs.
2 3/4" high drawer, half-width (50 maximum)	MEZ3HW	24 3/8"	27 3/4"	2 1/2"	16 lbs.
3 3/4" high drawer, full-width (19 maximum)	MEZ4FW	53"	27 3/4"	3 1/2"	28 lbs.
3 3/4" high drawer, half-width (38 maximum)	MEZ4HW	24 3/8"	27 3/4"	3 1/2"	17 lbs.

# model M62



- Two lift-off reinforced doors
- Three-point latching system
- Four levelers, adjustable from inside
- Slotted uprights with 1" spacing

Cabinet dimensions shown are exterior.

Drawer dimensions shown are interior.

DESCRIPTION	PART NO.	WIDTH	DEPTH	HEIGHT	WEIGHT
M62 Cabinet w/solid metal doors	M62-SD	96"	32"	79"	470 lbs.
M62 Cabinet w/solid metal doors w/vents	M62-SDV	96"	32"	79"	500 lbs.
M62 Cabinet w/metal frame glass doors	M62-GD	96"	32"	79"	600 lbs.
M62 Cabinet w/metal frame glass doors w/vents	M62-GDV	96"	32"	79"	620 lbs.

## OPTIONS

Removable Sanitary Pallet Base	M62RSPB	96"	32"	4 1/2"	65 lbs.
Dolly Base w/4 locking casters	M62DBLC	96"	32"	6"	125 lbs.
Magnetic Fumigant Pocket (black)	MFP-040				1 lb.
Rolled Textile, open bottom drawer w/mounts	M62ROTEXT	87 7/8"	27"	4 3/4"	67 lbs.
Textile Tubes	M62TEXTUB	87 7/8"	1"	1"	5 lbs.
Art Frame Assembly, full-height, vertical	ARTFRA	1 1/2"	29"	70"	60 lbs.

## SHELVES

Full-width adjustable shelf – bayonet mount	M62FWSH	92 1/2"	29 1/4"	1"	65 lbs.
Full extension, full-width shelf (250 lbs. capacity)+	M62FWS250	89 1/4"	28 1/4"	3/4"	75 lbs.
Full extension, full-width shelf (500 lbs. capacity)+	M62FWS500	89 1/4"	28 1/4"	3/4"	80 lbs.

## DRAWERS (INCLUDING MOUNTS)

### DRAWER - 250 LBS. CAPACITY

3 3/4" high drawer, full-width (18 maximum)	M624FWD250	89"	27 9/16"	3 3/8"	80 lbs.
4 3/4" high drawer, full-width (14 maximum)	M625FWD250	89"	27 9/16"	4 3/8"	83 lbs.
6 3/4" high drawer, full-width (10 maximum)	M627FWD250	89"	27 9/16"	6 3/8"	88 lbs.
8 3/4" high drawer, full-width (8 maximum)	M629FWD250	89"	27 9/16"	8 3/8"	95 lbs.

## DRAWERS (INCLUDING MOUNTS)

### DRAWER - 500 LBS. CAPACITY

3 3/4" high drawer, full-width (18 maximum)	M624FWD500	89"	27 9/16"	3 3/8"	80 lbs.
4 3/4" high drawer, full-width (14 maximum)	M625FWD500	89"	27 9/16"	4 3/8"	83 lbs.
6 3/4" high drawer, full-width (10 maximum)	M627FWD500	89"	27 9/16"	6 3/8"	88 lbs.
8 3/4" high drawer, full-width (8 maximum)	M629FWD500	89"	27 9/16"	8 3/8"	95 lbs.

+ Overall height of shelf including track is 3/4"

Drawers include full-extension, full suspension ball-bearing slides. Slides attach to cabinet with bayonet mounts and adjust vertically without tools.



**SOUTHWEST SOLUTIONS GROUP**

business organization systems

[www.southwestsolutions.com/home](http://www.southwestsolutions.com/home)

Toll Free 1-800-801-1087

# model M64



- Two lift-off reinforced doors
- Three-point latching system
- Four levelers, adjustable from inside
- Protective drawer bumper stop

Cabinet dimensions shown are exterior.

Drawer dimensions shown are interior.

DESCRIPTION	PART NO.	WIDTH	DEPTH	HEIGHT	WEIGHT
M64 Cabinet w/solid metal doors	M64-SD	39 1/2"	16 5/8"	84"	266 lbs.
M64 Cabinet w/solid metal doors w/vents	M64-SDV	39 1/2"	16 5/8"	84"	267 lbs.
M64 Cabinet w/metal frame glass doors	M64-GD	39 1/2"	16 5/8"	84"	295 lbs.
M64 Cabinet w/metal frame glass doors w/vents	M64-GDV	39 1/2"	16 5/8"	84"	296 lbs.

## OPTIONS

Removable Sanitary Pallet Base	M64RSPB	39 1/2"	16 5/8"	4 1/2"	30 lbs.
Magnetic Fumigant Pocket (black)	MFP-040				1 lb.

## SHELVES

Full-width adjustable shelf-bayonet mount (400 lbs. capacity)	M64FWS400	36"	13 7/8"	1"	20 lbs.
Full extension, full-width shelf (100 lbs. capacity)+	M64FWS100	33 1/8"	12 7/8"	3/4"	35 lbs.
Full extension, full-width shelf (250 lbs. capacity)+	M64FWS250	32 3/4"	12 7/8"	3/4"	45 lbs.

## DRAWERS (INCLUDING MOUNTS)

### DRAWER - 100 LBS. CAPACITY

1 3/4" high drawer, full-width (38 maximum)	M642FWD100	33"	12 3/16"	1 3/8"	32 lbs.
3 3/4" high drawer, full-width (19 maximum)	M644FWD100	33"	12 3/16"	3 3/8"	36 lbs.

+ Overall height of shelf including track is 3/4"

Drawers include full-extension, full suspension ball-bearing slides, slides attach to cabinet with bayonet mounts, adjust vertically without tools



**SOUTHWEST SOLUTIONS GROUP**

*business organization systems*

[www.southwestsolutions.com/museum](http://www.southwestsolutions.com/museum)

Toll Free 1-800-803-1083

## Standard Powder Coat Colors



010 Autumn Haze



159 Eggshell



445 White



065 Gray



040 Black



161 Mist Gray



D492 Parchment



F604 Pebble

*The colors depicted on this publication have been reproduced using a printing process and are only provided as a guide. The actual painted product may vary. All colors are not available on all products.*



**SOUTHWEST SOLUTIONS GROUP**

*business organization systems*

[www.southwestsolutions.com/museum](http://www.southwestsolutions.com/museum)

Toll Free 1-800-803-1083



**SOUTHWESTSOLUTIONSGROUP**

*business organization systems*

[www.southwestsolutions.com/museum](http://www.southwestsolutions.com/museum)

Toll Free 1-800-803-1083