

PRODUCT CATALOG



SOUTHWEST**SOLUTIONS**GROUP  
*business organization systems*



SOUTHWEST **SOLUTIONS** GROUP

*business organization systems*

## ■ specifying cabinets

understanding the item number .....	4
cabinet reference chart .....	5

## ■ standards catalog

base cabinets .....	6
sink cabinets .....	10
wall cabinets .....	11
tall cabinets .....	12
solution walls .....	18
worktops .....	30
supports .....	31
panels multi-use .....	32

## ■ finishes

applying finishes to cabinets .....	34
steel .....	36
hardware .....	37
thermofoil .....	38
hpl .....	39
framed door .....	40
framed door panel options .....	41
fabric options .....	42
trespa® options .....	46

# specifying cabinets

## Welcome

We are delighted that you are considering specifying your job with Southwest Solutions Group. You will find that our casework line is the most flexible and well built system on the market. In a few minutes, you will notice how simple the system is to specify and reconfigure. The following pages are configuration ideas to start from, categorized by application use. Once you understand the system, making your own cabinet configurations is a snap. First, let us look at the item number.

## Understanding the Item Number

Using the cabinet below, we can learn how to specify a cabinet. When building or reading a cabinet item number, keep a few things in mind:

1. The number of sets of doors – ex. 1  
1
2. The number of drawers – ex. 1  
11
3. The type of cabinet – ex. **Fixed Base Cabinet**  
11FBC
4. Add width, height, depth – ex. 12, 021, 15  
11FBC1202115  
width: actual width  
height: nominal height  
depth: actual depth from the back of cabinet to the front of the face panel
5. Add "L" for a left-swinging door, or "R" for a right-swinging door cabinet  
11FBC1202115L

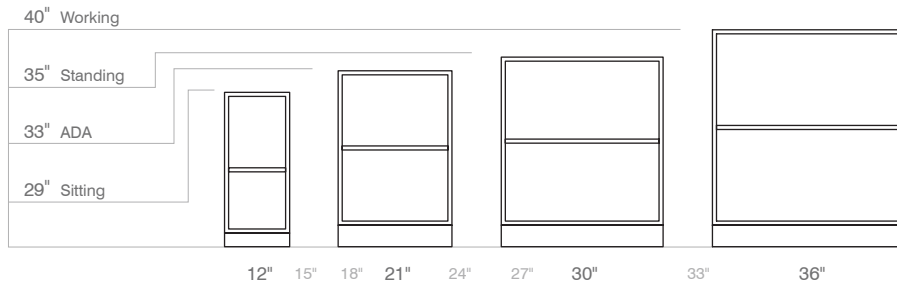


## Item Number Reference Chart

Description	1	1	FBC	12	021	15	-	B	F, H, T
# of sets of doors *									
<b>All cabinets except wall cabinets</b> # of sets of drawers <b>If wall cabinet</b> 0 = fully open cabinet 0 = fully closed cabinet 1 = mixed cabinet									
<b>Style</b> FBC = Fixed Base Cabinet FWC = Fixed Wall Cabinet FTC = Fixed Tall Cabinet FFC = Fixed File Cabinet FSC = Fixed Sink Cabinet FGC = Fixed Garage Cabinet BBC = Blind Corner Cabinet									
<b>Width</b> 12" - 36" (in 3" increments)									
<b>Height</b> Base = 29, 33, 35" Wall = 24, 30, 36, 48" Tall = 40, 60, 83"									
<b>Depth *</b> 12, 15, 21, 24, 29"									
L or R = swing of door or placement of hinge*									
<b>Box Finish *</b> P = Powder Coated S = Stainless Steel	Please see the finishes section to find the appropriate number for your finish.								
<b>Front Finish</b> F = Framed (stainless steel front is framed) H = HPL T = Thermofoil	Please see the finishes section to find the appropriate number for your finish.								
* More detail regarding the item number:									
1) A set of doors is considered one or two doors on a cabinet (depending on width of cabinet) at the same level. 2) Depth measurement of cabinets is based on the distance from the back of the cabinet to the front of the face panel. All open cabinet depth measurements include face panel thickness. 3) L or R is specified on single door cabinets based on which direction the door opens or the location of the hinges as you face the cabinet. 4) Hardware items such as hinges and pulls will match selected box finish (nickel or black).									

# base cabinets

## 00FBC

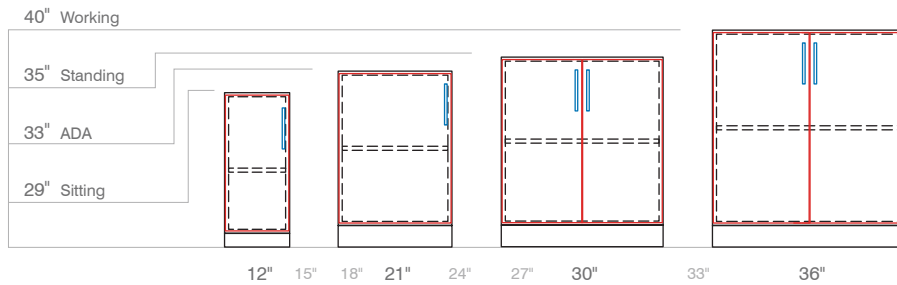


### Standard Sizes

W = 12" - 36" [ ]  
 H = 29, 33, 35, 40" ^  
 D = 21, 24, 29"

No doors, open slots,  
 fixed base cabinet

## 10FBC

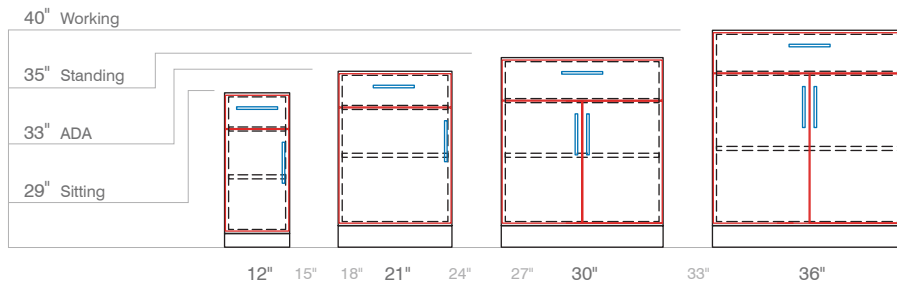


### Standard Sizes

W = 12" - 36" [ ]  
 H = 29, 33, 35, 40" ^  
 D = 21, 24, 29"

One set of doors, fixed  
 base cabinet

## 11FBC

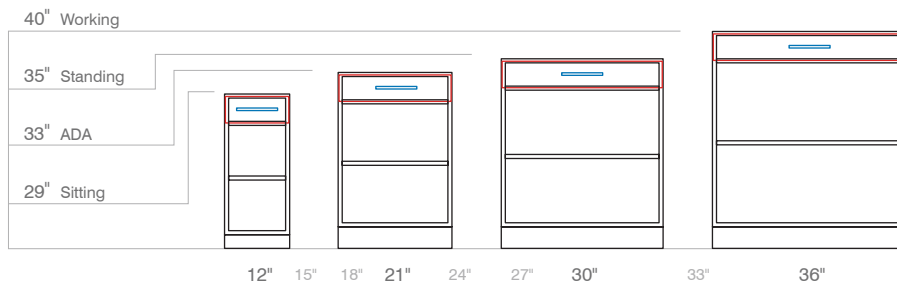


### Standard Sizes

W = 12" - 36" [ ]  
 H = 29, 33, 35, 40" ^  
 D = 21, 24, 29"

One set of doors, one  
 drawer, fixed base cabinet

## 01FBC



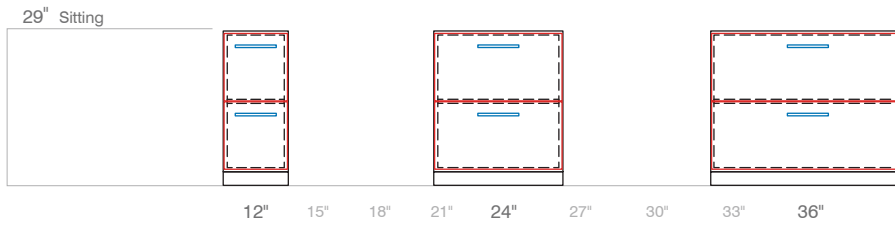
### Standard Sizes

W = 12" - 36" [ ]  
 H = 29, 33, 35, 40" ^  
 D = 21, 24, 29"

No doors, one drawer, open  
 slots, fixed base cabinet

# base cabinets

## 02FBC



### Standard Sizes

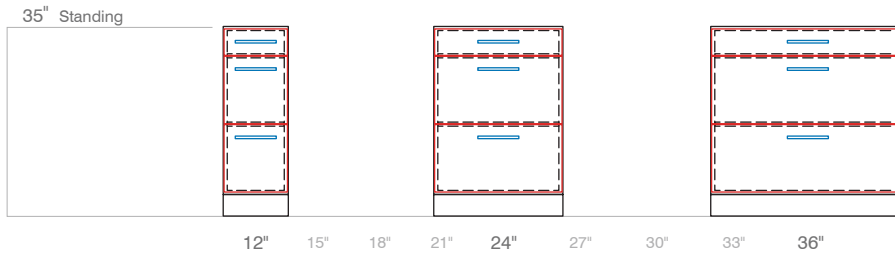
W = 12" - 36" [ ]

H = 29" ^

D = 21, 24, 30"

No doors, two file drawers, fixed base cabinet

## 03FFC



### Standard Sizes

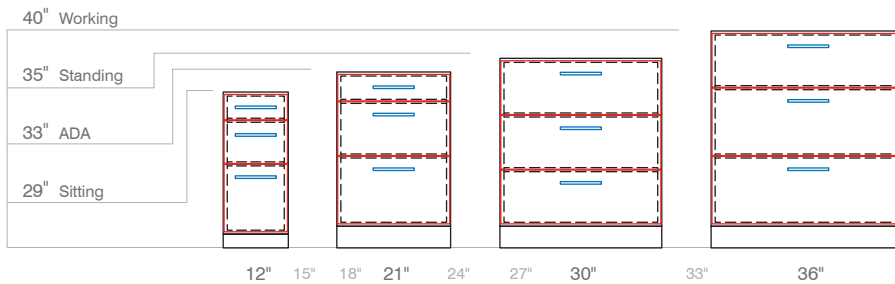
W = 12" - 36" [ ]

H = 35" ^

D = 21, 24, 29"

No doors, one personal, two file drawers, fixed file cabinet

## 03FBC



### Standard Sizes

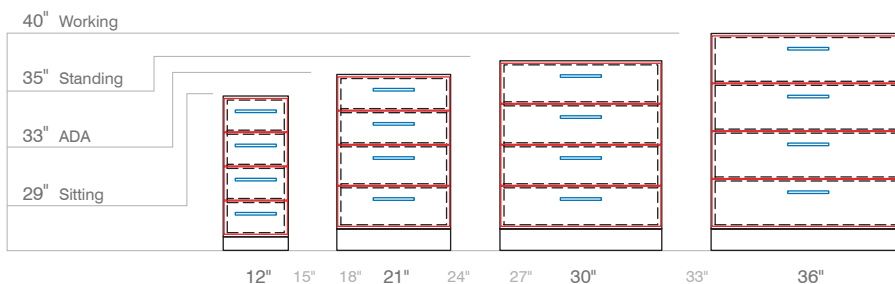
W = 12" - 36" [ ]

H = 29, 33, 35, 40" ^

D = 21, 24, 29"

No doors, mixed drawers, fixed base cabinet

## 04FBC



### Standard Sizes

W = 12" - 36" [ ]

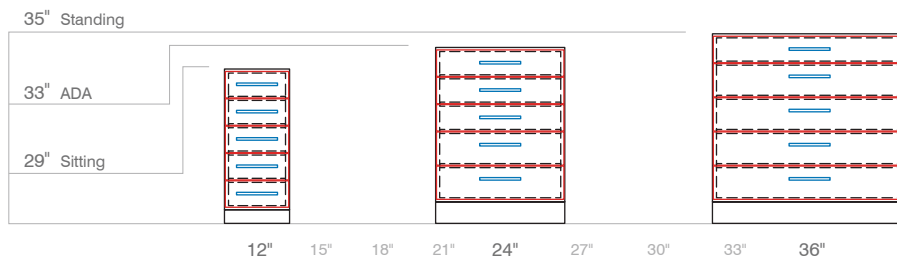
H = 29, 33, 35, 40" ^

D = 21, 24, 29"

No doors, four drawers, fixed base cabinet

# base cabinets

## 05FBC

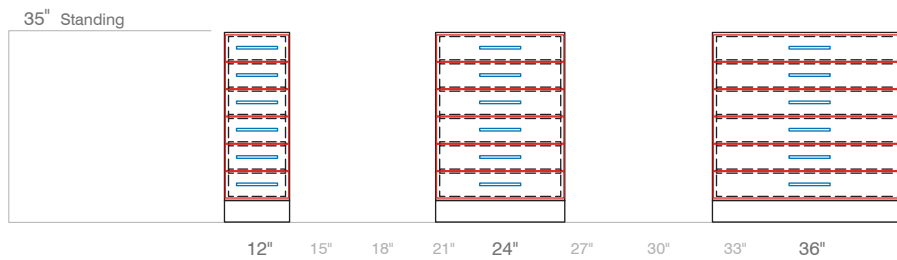


### Standard Sizes

W = 12" - 36" [ ]  
 H = 29, 33, 35" ^  
 D = 21, 24, 29"

No doors, five drawers,  
 fixed base cabinet

## 06FBC

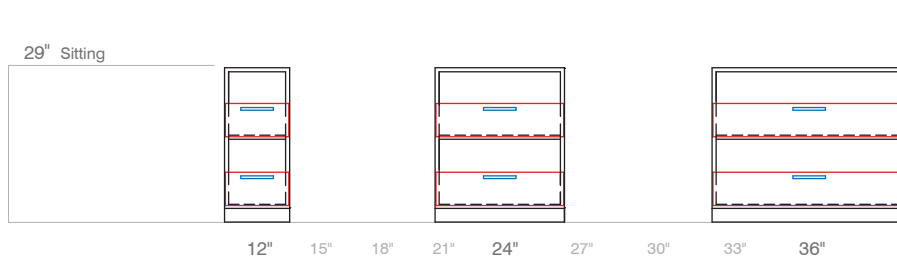


### Standard Sizes

W = 12" - 36" [ ]  
 H = 35" ^  
 D = 21, 24, 30"

No doors, six drawers,  
 fixed base cabinet

## 02FBG

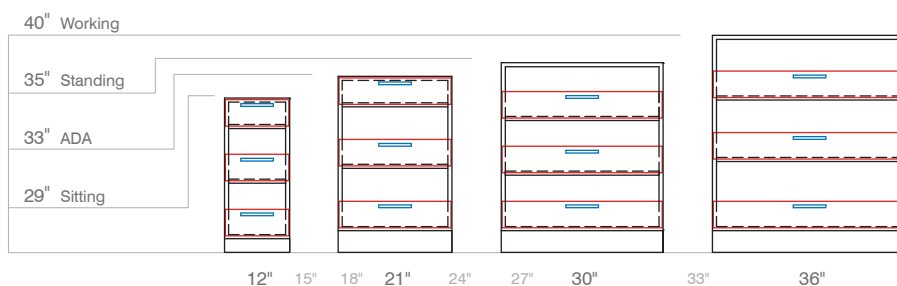


### Standard Sizes

W = 12" - 36" [ ]  
 H = 29" ^  
 D = 18, 21, 24, 29"

No doors, two drawers,  
 fixed base gravity drawer  
 cabinet

## 03FBG



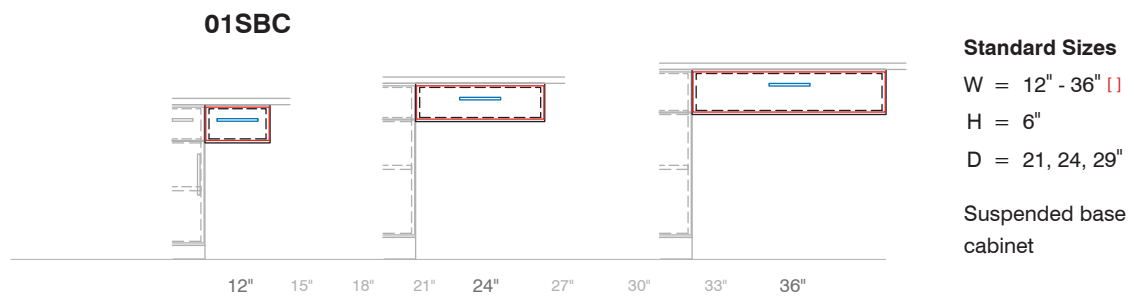
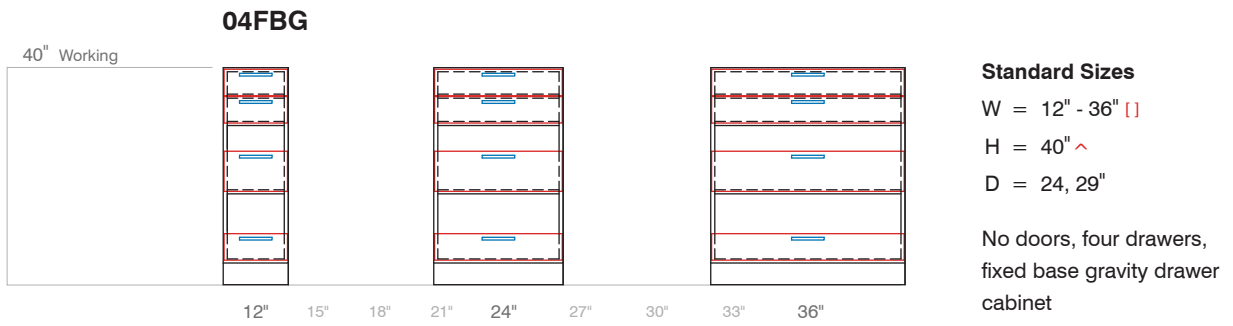
### Standard Sizes

W = 12" - 36" [ ]  
 H = 29, 33, 35, 40" ^  
 D = 18, 21, 24, 29"

No doors, three drawers,  
 fixed base gravity drawer  
 cabinet

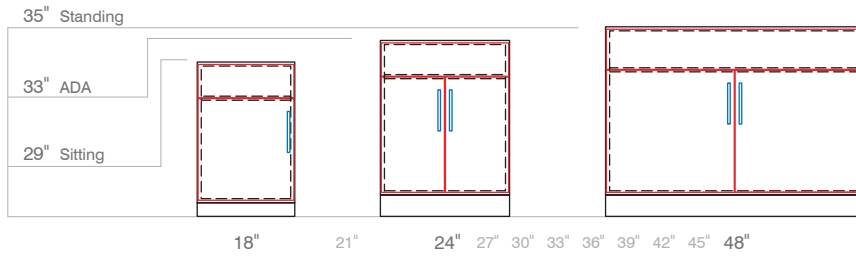


# base cabinets



# sink cabinets

## 11FSC



### Standard Sizes

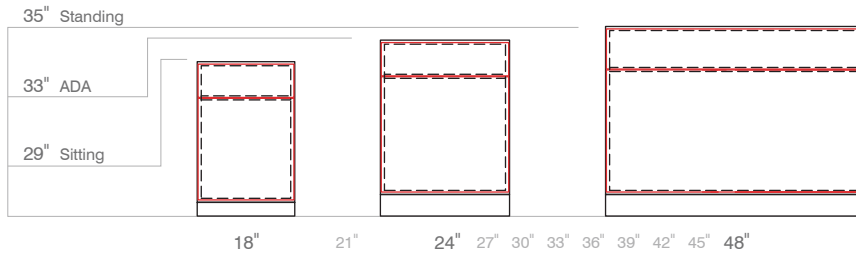
W = 18" - 48" [ ]

H = 29, 33, 35" ^

D = 21, 24, 29"

One set of doors, one false front, fixed sink cabinet

## 11FSP



### Standard Sizes

W = 18" - 48"

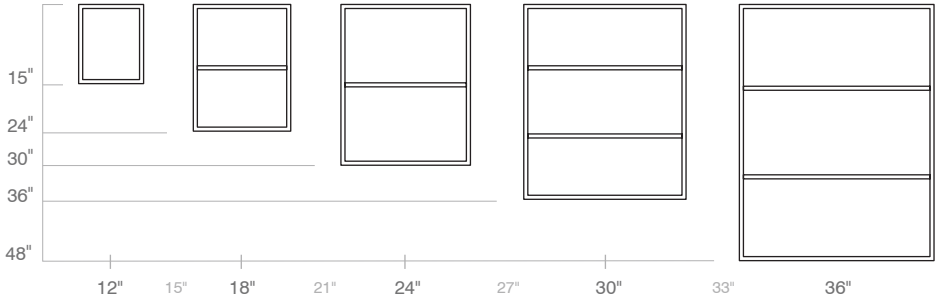
H = 29, 33, 35" ^

D = 21, 24, 29"

One removable panel, one false front, fixed sink panel

# wall cabinets

## 00FWC

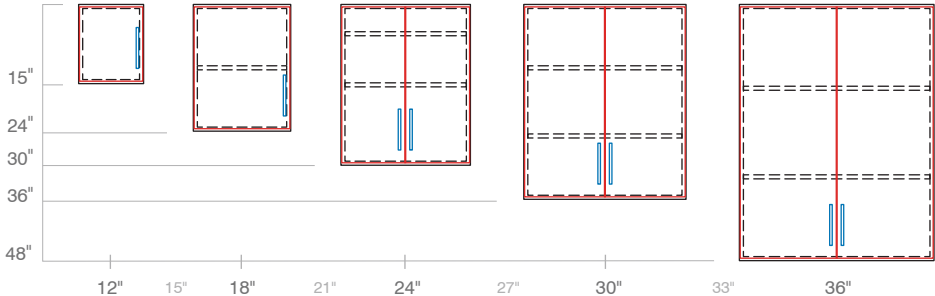


**Standard Sizes**

- W = 12" - 36" [ ]
- H = 15, 24, 30, 36, 48" ^
- D = 12, 15, 21"

No doors, open, fixed wall cabinet

## 10FWC

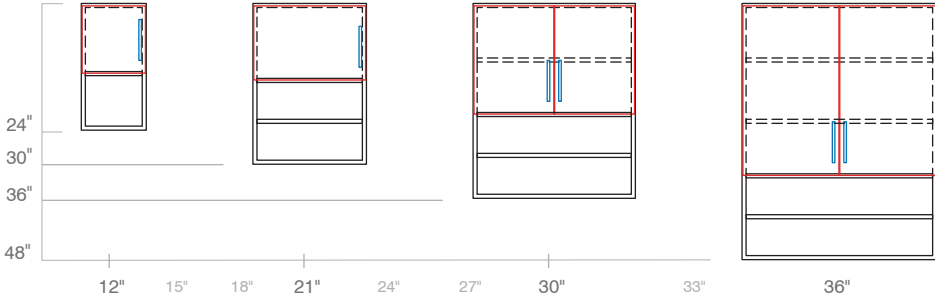


**Standard Sizes**

- W = 12" - 36" [ ]
- H = 15, 24, 30, 36, 48" ^
- D = 12, 15, 21"

One set of doors, fixed wall cabinet

## 11FWC



**Standard Sizes**

- W = 12" - 36" [ ]
- H = 24, 30, 36, 48" ^
- D = 12, 15, 21"

One set of doors, open, fixed wall cabinet

# tall cabinets

## 00FTC

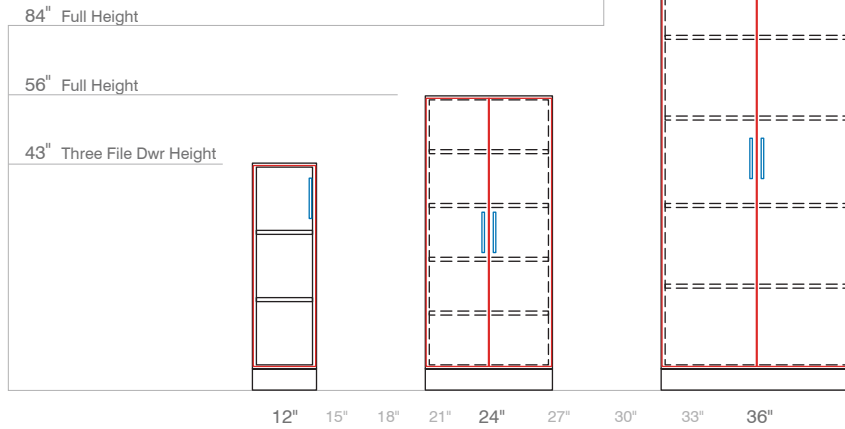


### Standard Sizes

W = 12" - 36" [ ]  
 H = 43, 56, 84" ^  
 D = 15, 21, 24"

No doors, open, fixed tall cabinet

## 10FTC

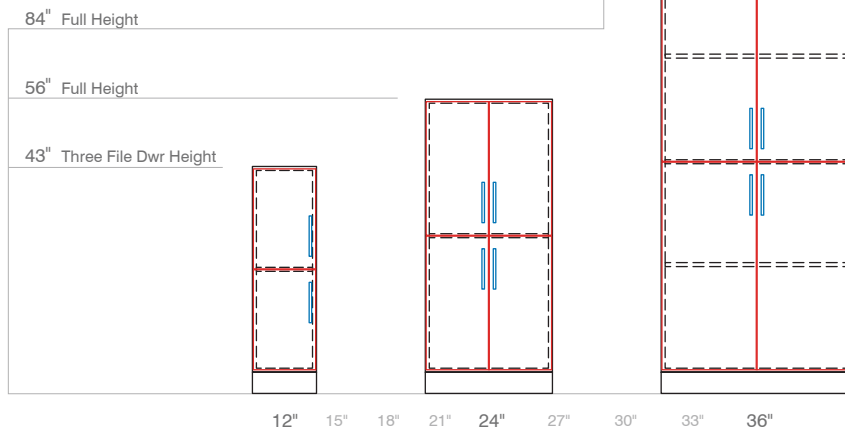


### Standard Sizes

W = 12" - 36" [ ]  
 H = 43, 56, 84" ^  
 D = 15, 21, 24"

One set of doors, fixed tall cabinet

## 20FTC



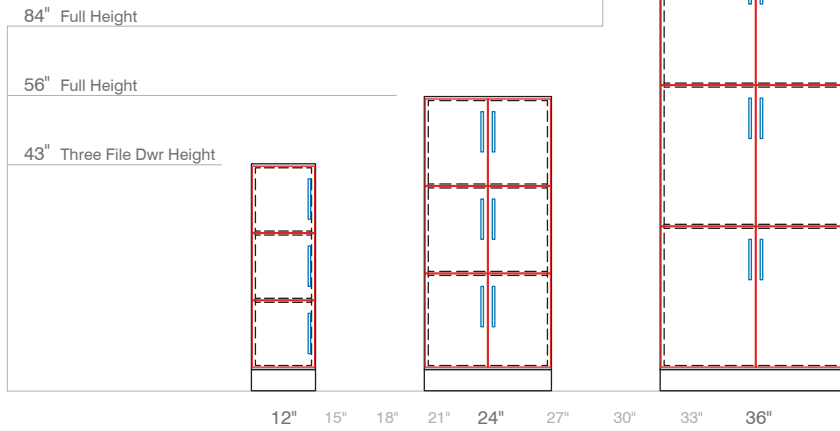
### Standard Sizes

W = 12" - 36" [ ]  
 H = 43, 56, 84" ^  
 D = 15, 21, 24"

Two sets of doors, fixed tall cabinet

# tall cabinets

## 30FTC

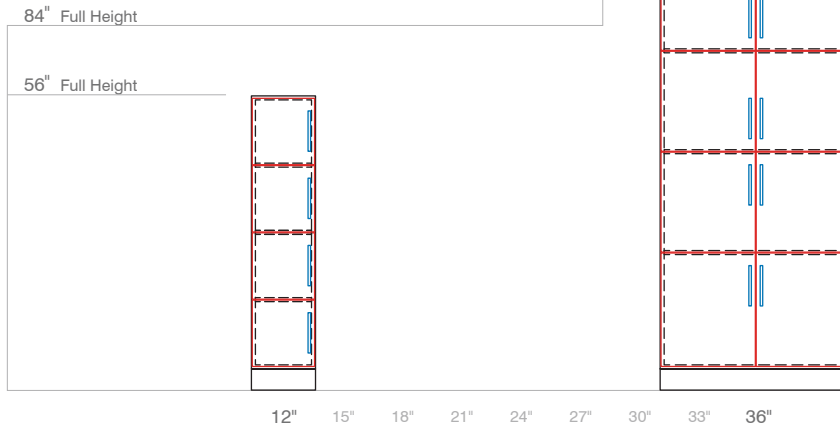


### Standard Sizes

W = 12" - 36" [ ]  
H = 43, 56, 84" ^  
D = 15, 21, 24"

Three sets of doors,  
fixed tall cabinet

## 40FTC

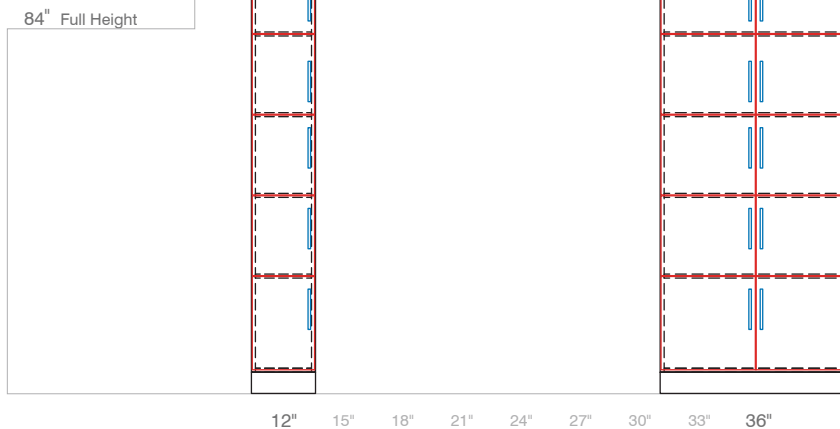


### Standard Sizes

W = 12" - 36" [ ]  
H = 56, 84" ^  
D = 15, 21, 24"

Four sets of doors,  
fixed tall cabinet

## 50FTC



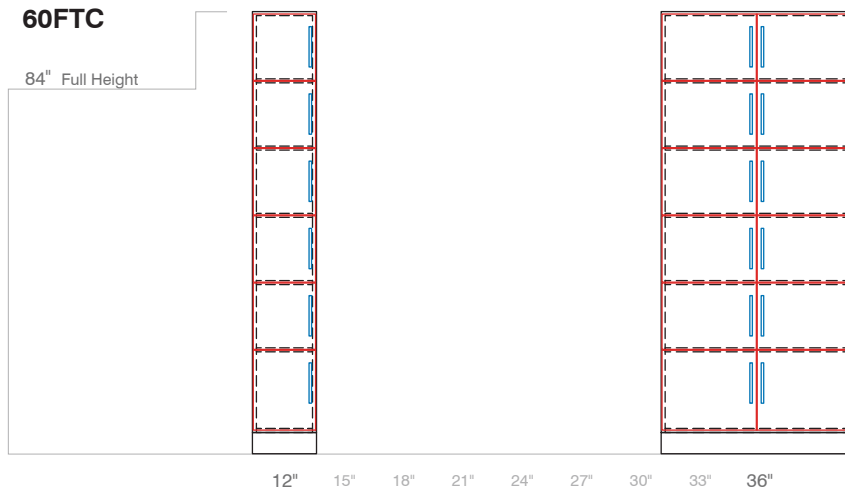
### Standard Sizes

W = 12" - 36" [ ]  
H = 84"  
D = 15, 21, 24"

Five sets of doors, fixed  
tall cabinet

# tall cabinets

## 60FTC



### Standard Sizes

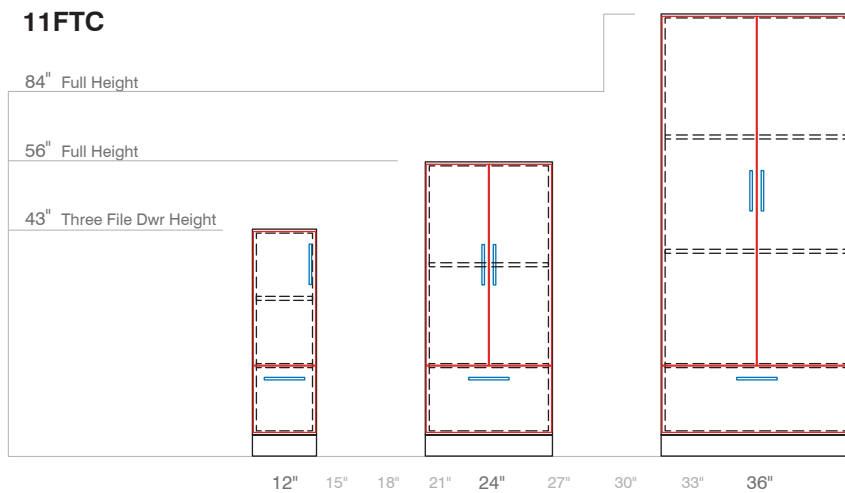
W = 12" - 36" [ ]

H = 84"

D = 15, 21, 24"

Six sets of doors, fixed tall cabinet

## 11FTC



### Standard Sizes

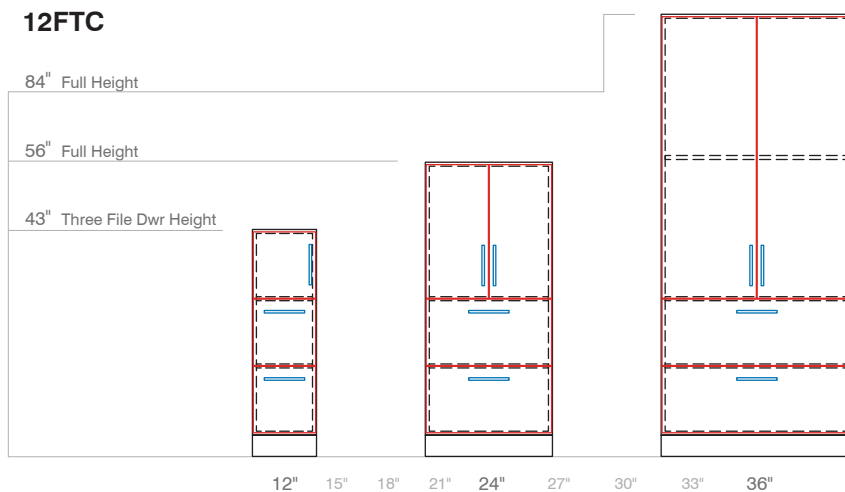
W = 12" - 36" [ ]

H = 43, 56, 84" ^

D = 21, 24"

One set of doors, one file drawer, fixed tall cabinet

## 12FTC



### Standard Sizes

W = 12" - 36" [ ]

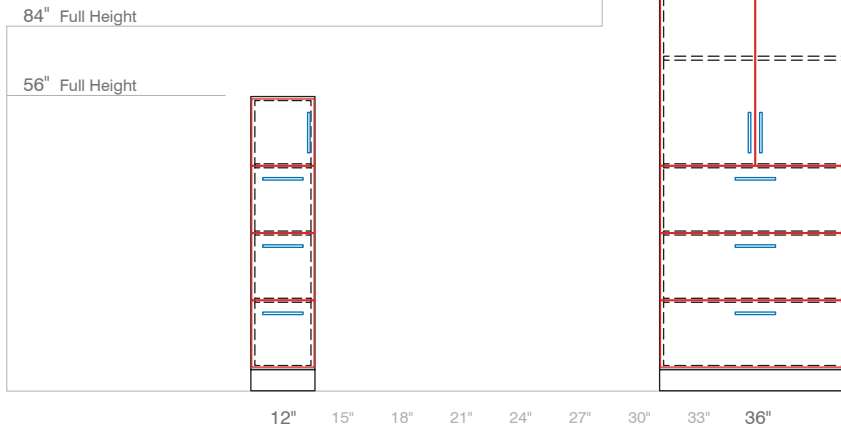
H = 43, 56, 84" ^

D = 21, 24"

One set of doors, two file drawers, fixed tall cabinet

# tall cabinets

## 13FTC



### Standard Sizes

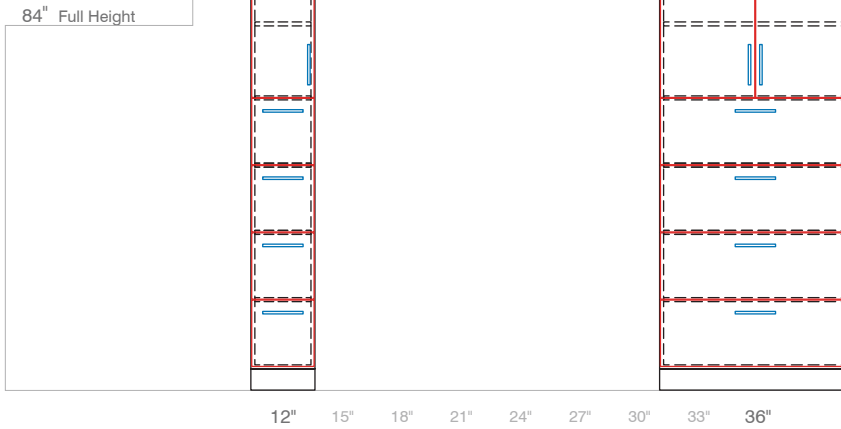
W = 12" - 36" [ ]

H = 56, 84" ^

D = 21, 24"

One set of doors, three file drawers, fixed tall cabinet

## 14FTC



### Standard Sizes

W = 12" - 36" [ ]

H = 84"

D = 21, 24"

One set of doors, four file drawers, fixed tall cabinet

## 01FTC



### Standard Sizes

W = 12" - 36" [ ]

H = 43, 56, 84" ^

D = 21, 24"

No doors, one file drawer, open, fixed tall cabinet

# tall cabinets

## 02FTC



### Standard Sizes

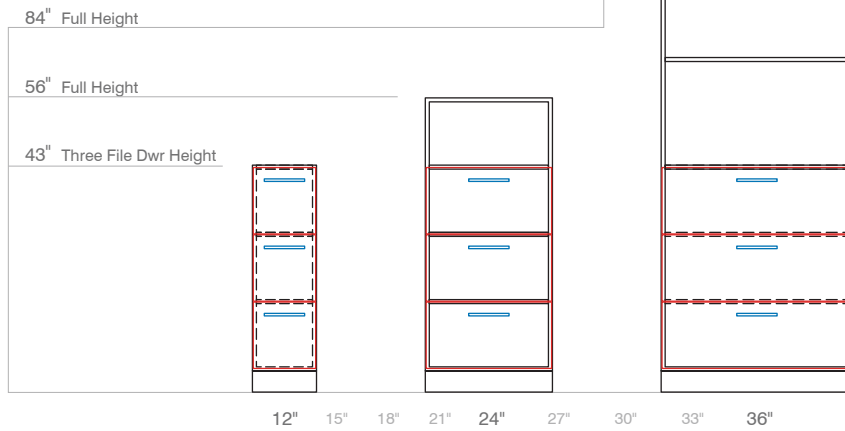
W = 12" - 36" [ ]

H = 43, 56, 84" ^

D = 21, 24"

No doors, two file drawers,  
open, fixed tall cabinet

## 03FTC



### Standard Sizes

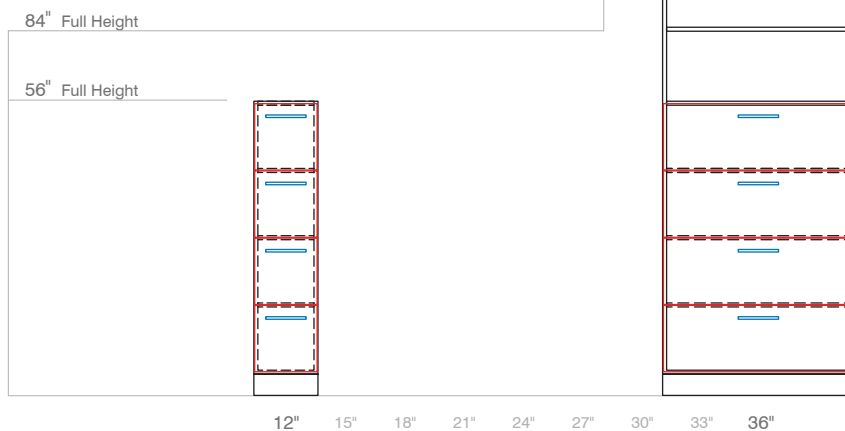
W = 12" - 36" [ ]

H = 43, 56, 84" ^

D = 21, 24"

No doors, three file drawers,  
open, fixed tall cabinet

## 04FTC



### Standard Sizes

W = 12" - 36" [ ]

H = 56, 84" ^

D = 21, 24"

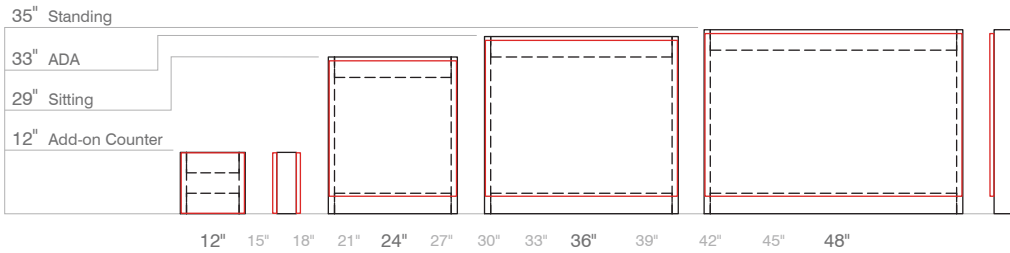
No doors, four file drawers,  
open, fixed tall cabinet





# solution walls

## 10DWL

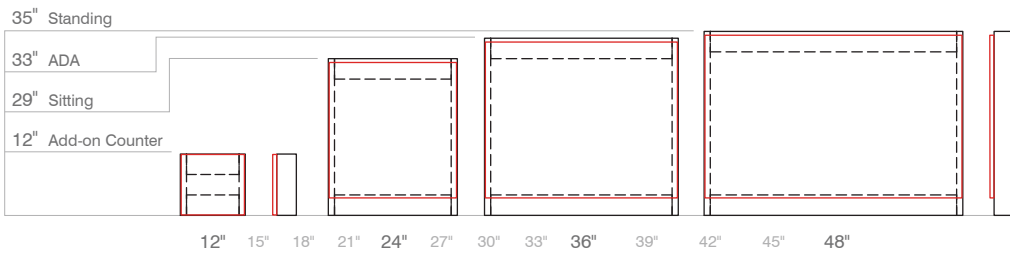


### Standard Sizes

W = 12" - 48" [ ]  
H = 12, 29, 33, 35" ^  
D = 5"

One panel, double-sided solution wall

## 10SWL

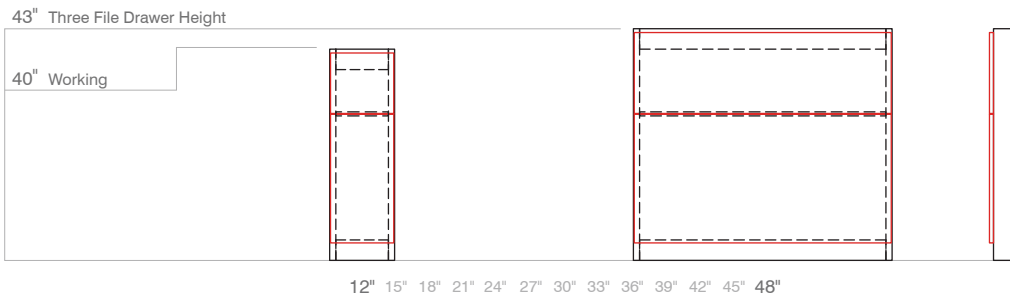


### Standard Sizes

W = 12" - 48" [ ]  
H = 12, 29, 33, 35" ^  
D = 5"

One panel, single-sided solution wall

## 20DWL

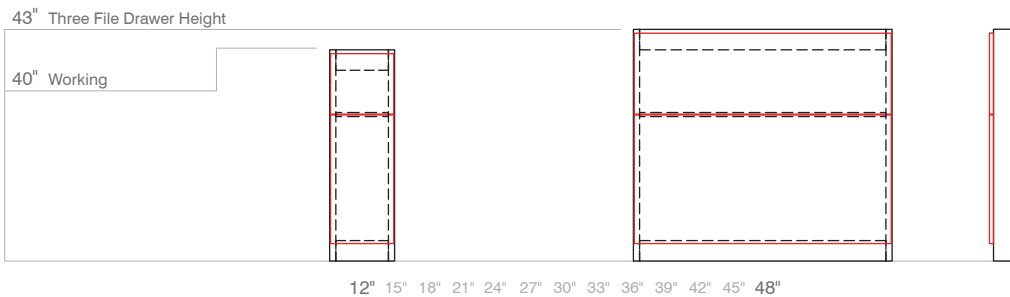


### Standard Sizes

W = 12" - 48" [ ]  
H = 40, 43" ^  
D = 5"

Two panels, double-sided solution wall

## 20SWL



### Standard Sizes

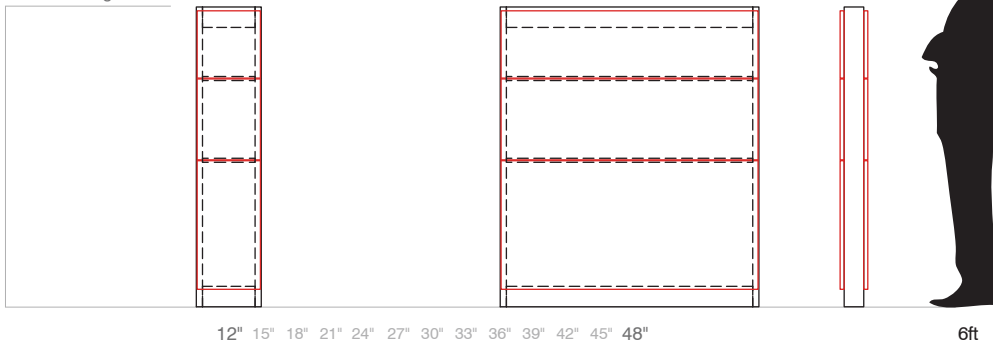
W = 12" - 48" [ ]  
H = 40, 43" ^  
D = 5"

Two panels, single-sided solution wall

# solution walls

## 30DWL

56" Full Height



### Standard Sizes

W = 12" - 48" [ ]

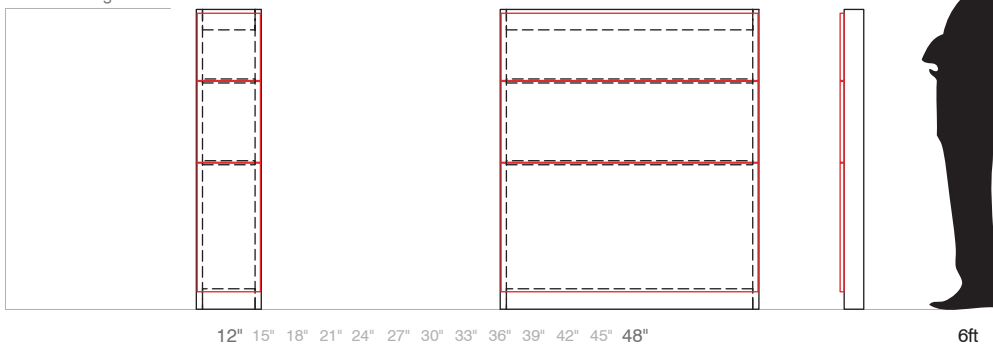
H = 56" ^

D = 5"

Three panels, double-sided solution wall

## 30SWL

56" Full Height



### Standard Sizes

W = 12" - 48" [ ]

H = 56" ^

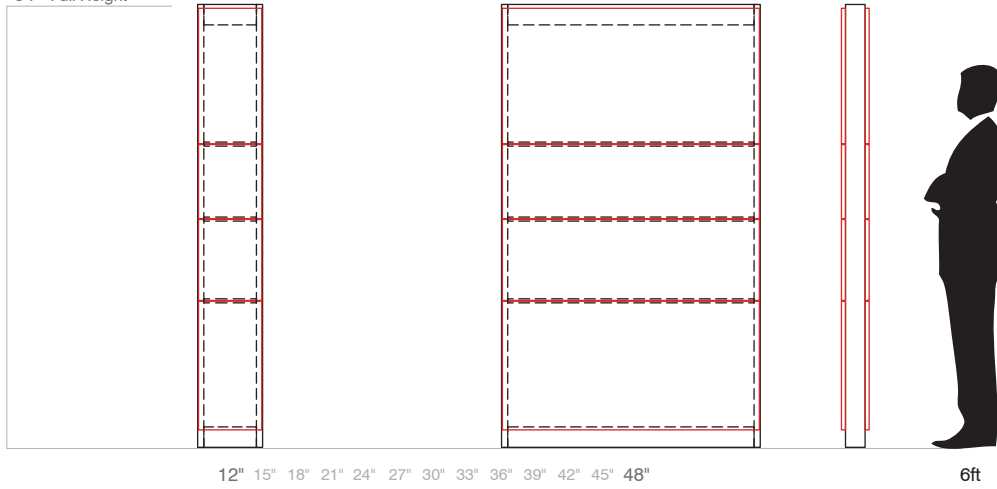
D = 5"

Three panels, single-sided solution wall

# solution walls

## 40DWL

84" Full Height



### Standard Sizes

W = 12" - 48" [ ]

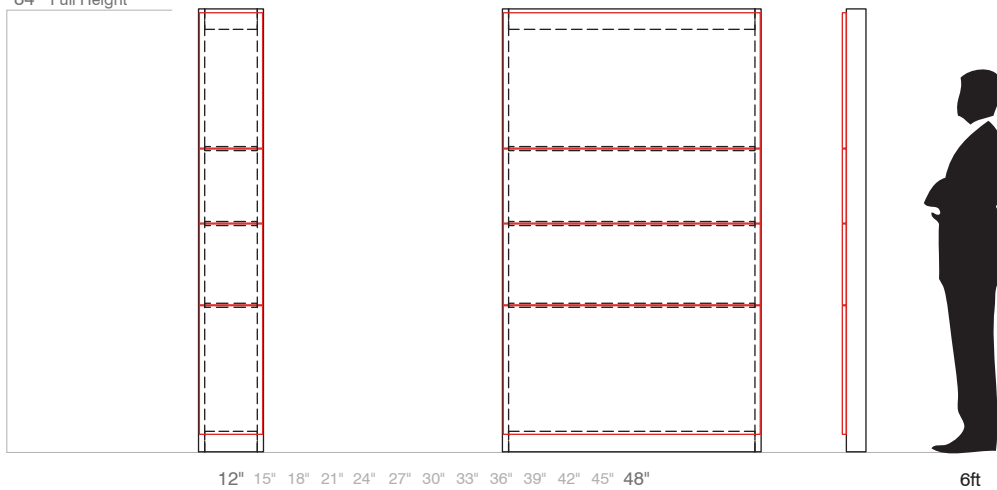
H = 84" ^

D = 5"

Four panels, double-sided solution wall

## 40SWL

84" Full Height



### Standard Sizes

W = 12" - 48" [ ]

H = 84" ^

D = 5"

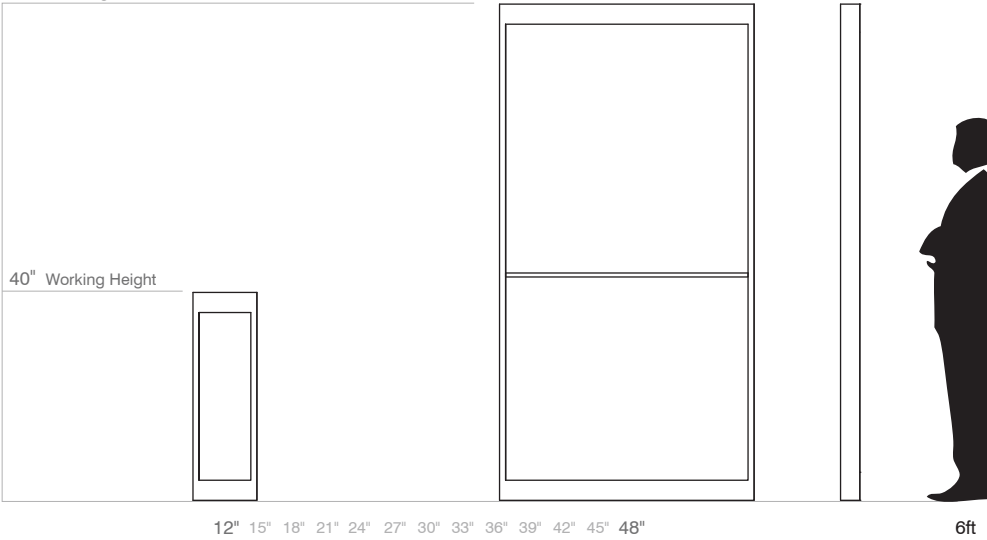
Four panels, single-sided solution wall

# solution walls

## 10OWL

94" Full Height

40" Working Height



### Standard Sizes

W = 12" - 48" [ ]

H = 40, 43, 56, 84, 94" ^

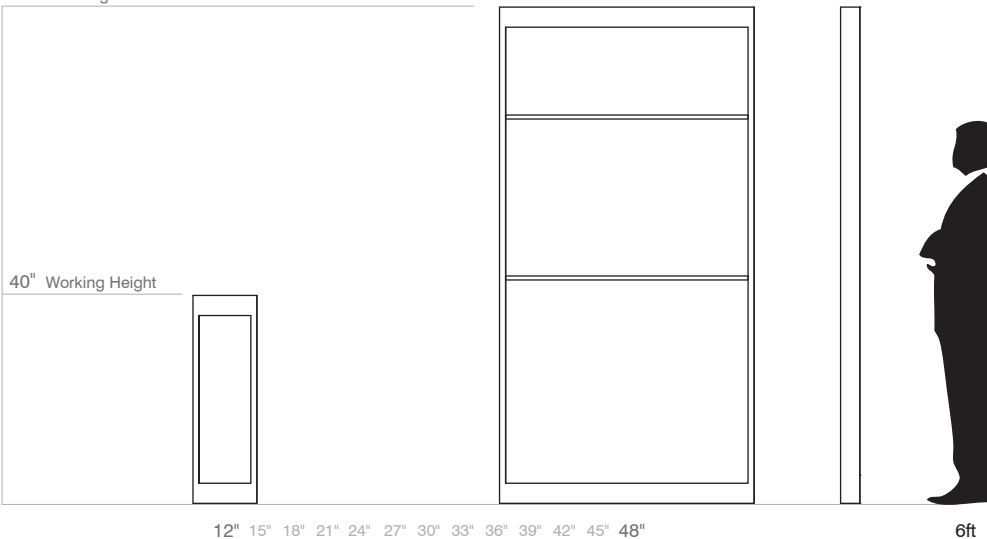
D = 5"

Open wall lab

## 20OWL

94" Full Height

40" Working Height



### Standard Sizes

W = 12" - 48" [ ]

H = 40, 43, 56, 84, 94" ^

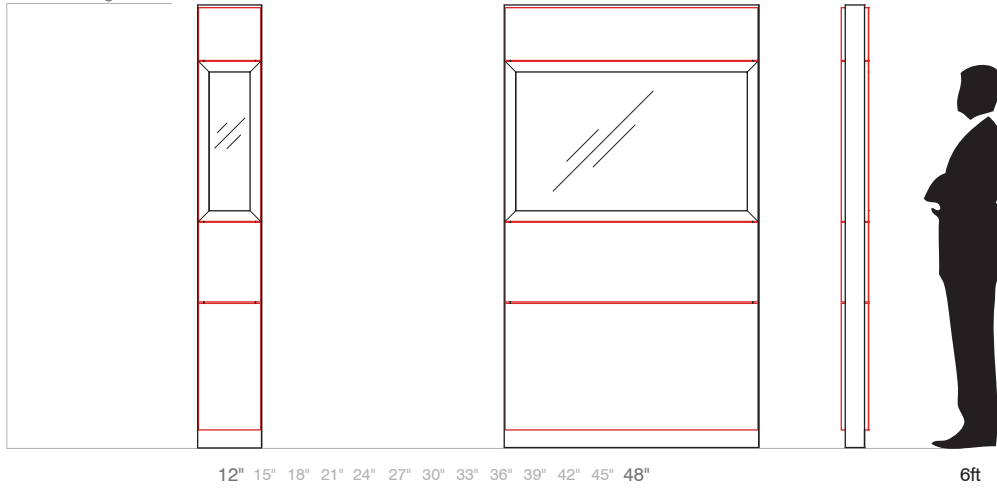
D = 5"

Open wall lab

# solution walls

## 40DGW

84" Full Height



### Standard Sizes

W = 12" - 48" [ ]

H = 84" ^

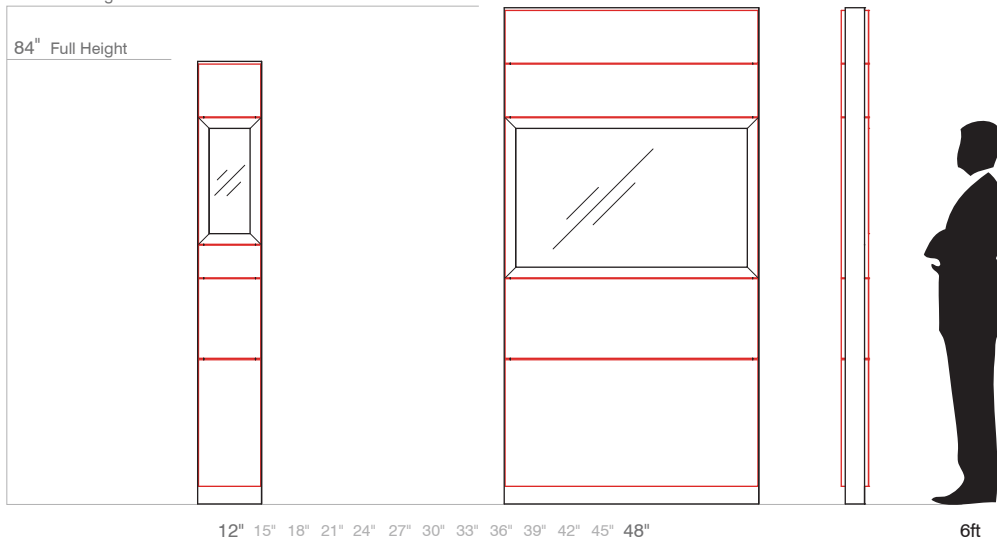
D = 5"

Double-sided glass wall

## 50DGW

94" Full Height

84" Full Height



### Standard Sizes

W = 12" - 48" [ ]

H = 84, 94" ^

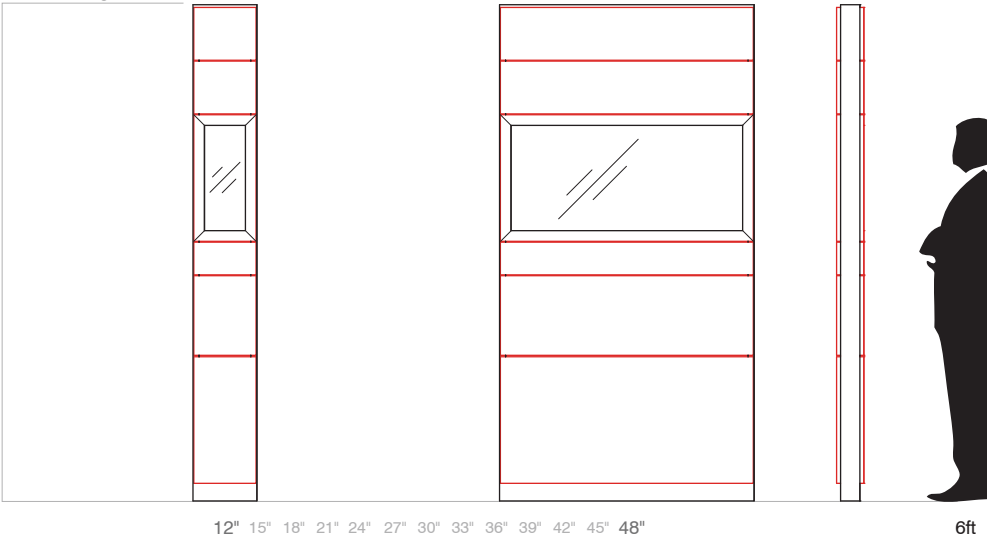
D = 5"

Double-sided glass wall

# solution walls

## 60DGW

94" Full Height



### Standard Sizes

W = 12" - 48" [ ]

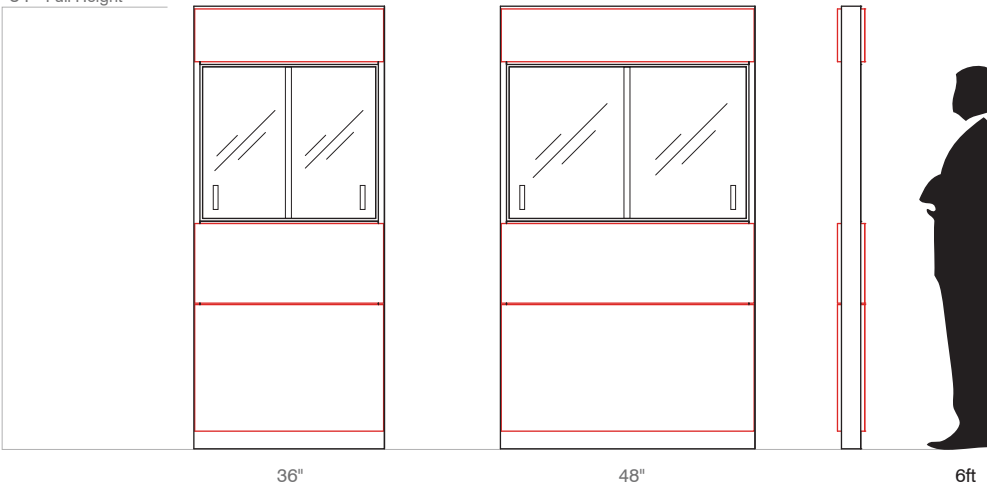
H = 94" ^

D = 5"

Double-sided glass wall

## 40DSW

84" Full Height



### Standard Sizes

W = 36, 48"

H = 84" ^

D = 5"

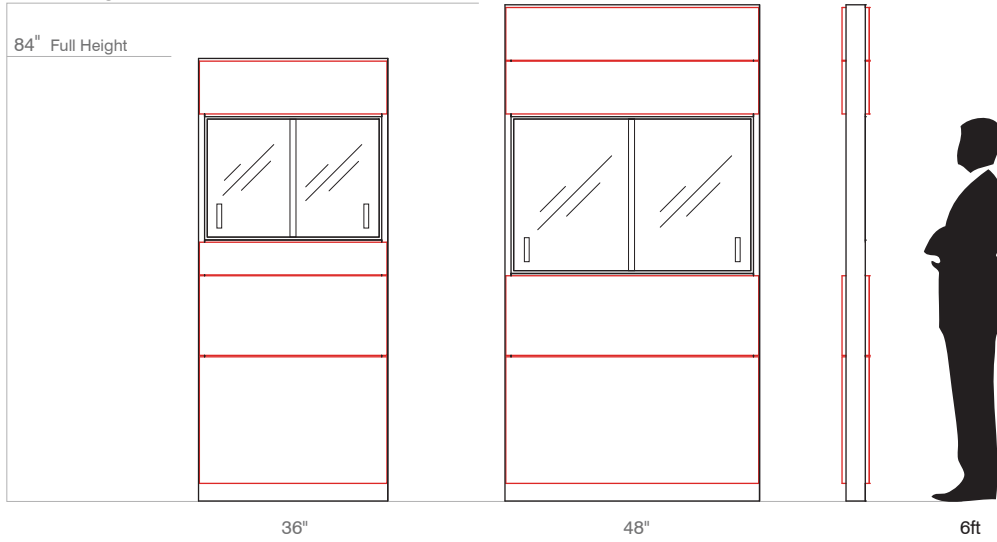
Double-sided sliding  
pass-thru wall

# solution walls

## 50DSW

94" Full Height

84" Full Height



### Standard Sizes

W = 36, 48"

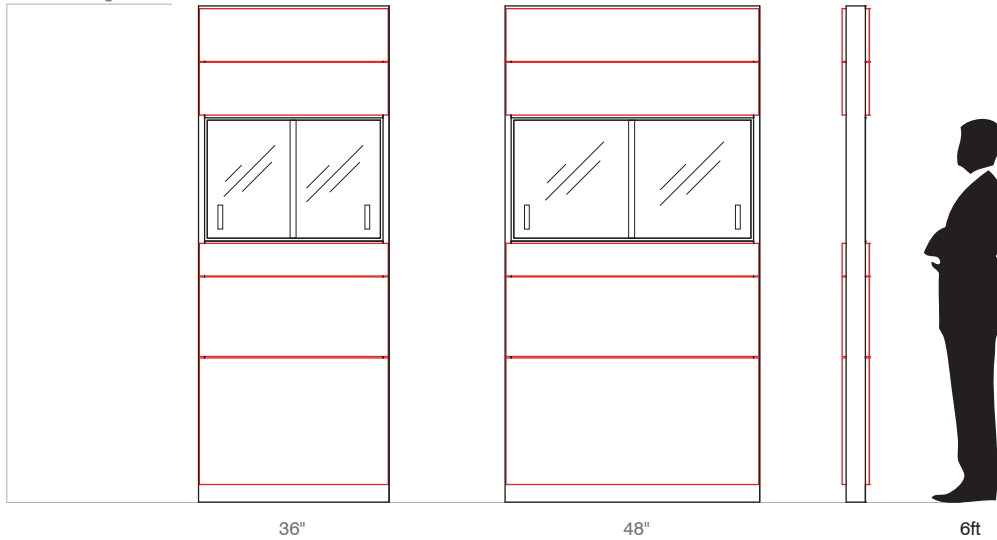
H = 84, 94" ^

D = 5"

Double-sided sliding pass-thru wall

## 60DSW

94" Full Height



### Standard Sizes

W = 36, 48"

H = 94" ^

D = 5"

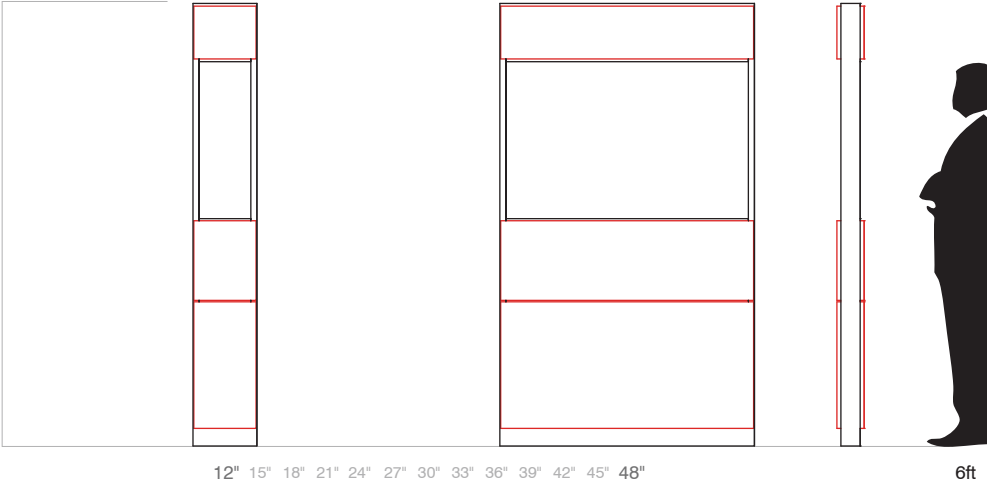
Double-sided sliding pass-thru wall



# solution walls

## 40DOW

84" Full Height



### Standard Sizes

W = 12" - 48" [ ]

H = 84" ^

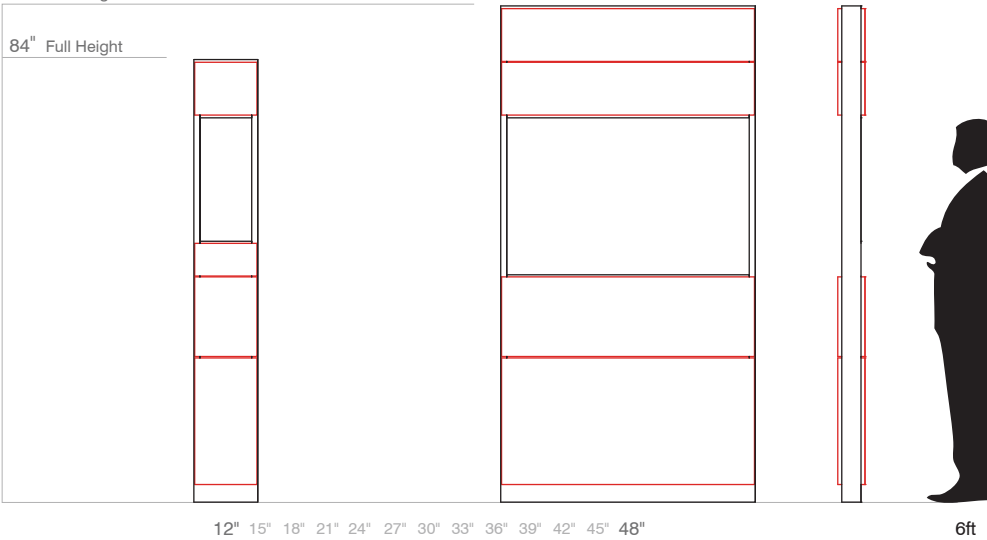
D = 5"

Double-sided open  
pass-thru wall

## 50DOW

94" Full Height

84" Full Height



### Standard Sizes

W = 12" - 48" [ ]

H = 84, 94" ^

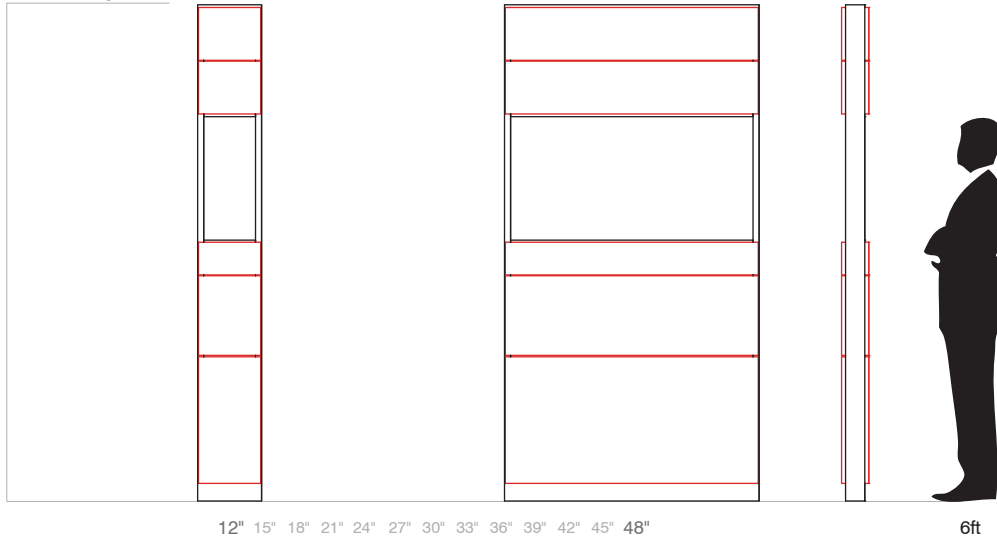
D = 5"

Double-sided open  
pass-thru wall

# solution walls

## 60DOW

94" Full Height



### Standard Sizes

W = 12" - 48" [ ]

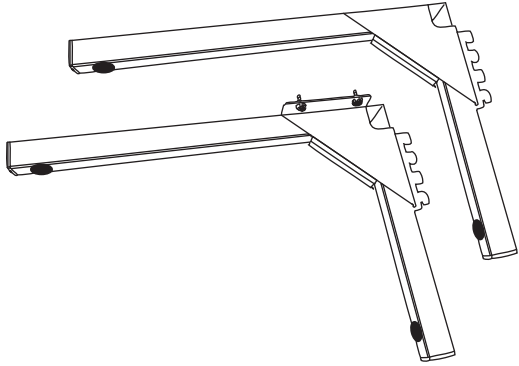
H = 94" ^

D = 5"

Double-sided open  
pass-thru wall

# solution wall accessories

## 00CTS



### Standard Sizes

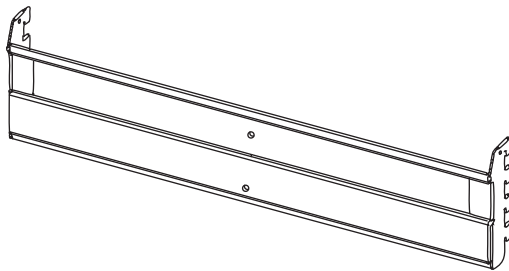
W = N/A

H = 14"

D = 8, 20 $\frac{1}{4}$ , 23 $\frac{1}{4}$ , 28 $\frac{1}{4}$ "

Support brackets for work surfaces used with solution wall system. Sold in pairs of nickel or black finishes.

## 00WMR



### Standard Sizes

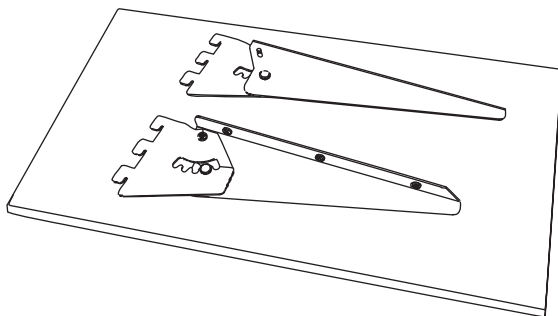
W = 12" - 48" [ ]

H = N/A

D = N/A

Wall mounting rail for securing overhead cabinets to solution wall system

## OHSWS, OTSWS, ORSWS



### Standard Sizes

W = Based on Solution Wall

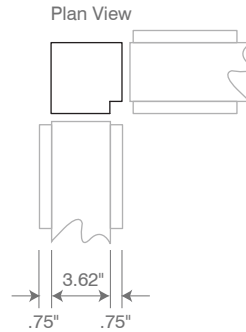
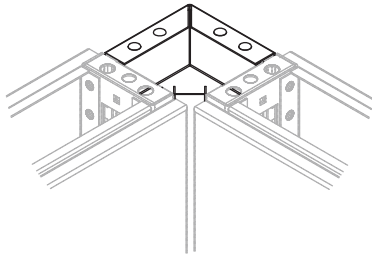
H = N/A

D = 9" - 18" \*

Shelf brackets for wall mounted slope shelves on solution wall system. Sold as package, with HPL, Thermofoil, or Trespa® shelf. Individual brackets are sold separately in nickel or black finishes.

# solution wall corners

## 10SWC



### Standard Sizes

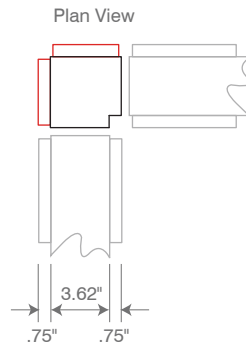
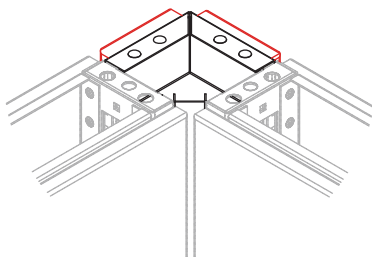
W = 5"

H = 12, 29, 33, 35, 40, 43, 56, 84" ^

D = 5"

90° corner connector without panels for joining solution walls

## 20SWC



### Standard Sizes

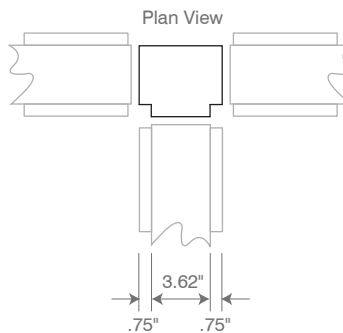
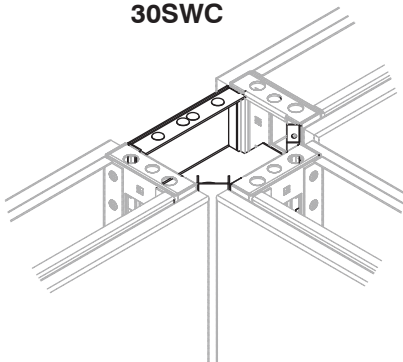
W = 5"

H = 12, 29, 33, 35, 40, 43, 56, 84" ^

D = 5"

90° corner connector with panels for joining double-sided solution walls

## 30SWC



### Standard Sizes

W = 5"

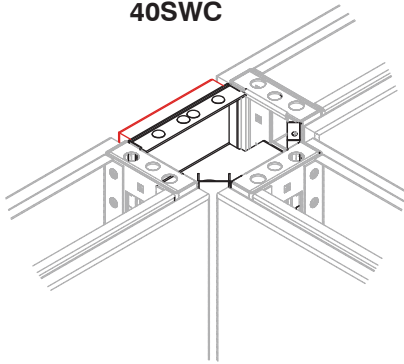
H = 12, 29, 33, 35, 40, 43, 56, 84" ^

D = 5"

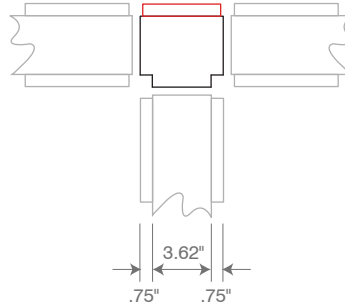
3-way corner connector without panels for joining solution walls

# solution wall corners

**40SWC**



Plan View



**Standard Sizes**

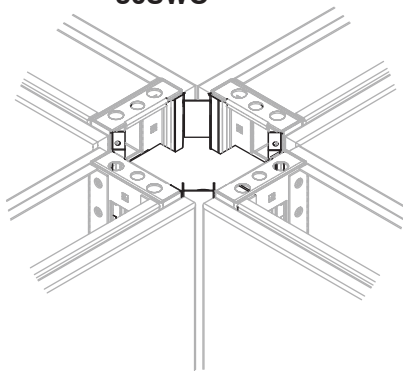
W = 5"

H = 12, 29, 33, 35, 40, 43, 56, 84" ^

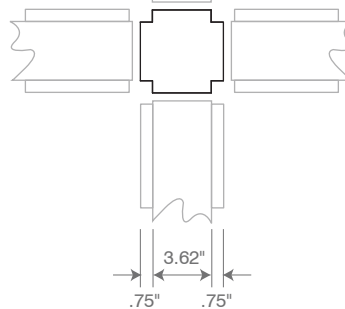
D = 5"

3-way corner connector with panels for joining double-sided solution walls

**50SWC**



Plan View



**Standard Sizes**

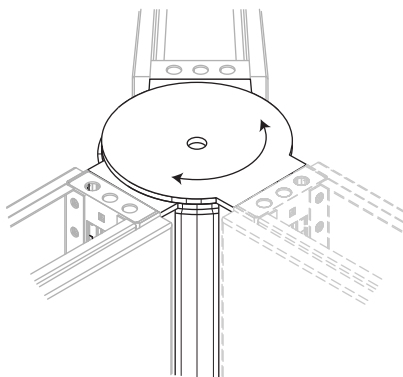
W = 5"

H = 12, 29, 33, 35, 40, 43, 56, 84" ^

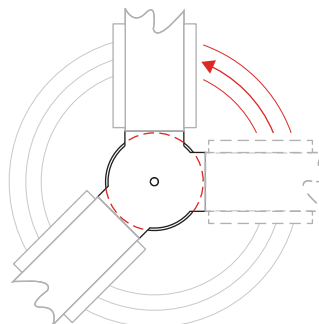
D = 5"

4-way corner connector without panels for joining solution walls

**60SWC**



Plan View



**Standard Sizes**

W = 6"

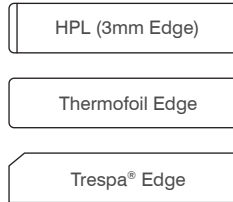
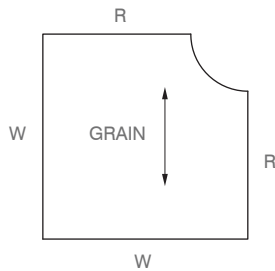
H = 12, 29, 33, 35, 40, 43, 56, 84" ^

D = 6"

Pole style connector for joining solution walls and allowing variable angle connections

# worktop panels

## 0\*CCT ( 1-1/8" Worktop )



### Standard Sizes

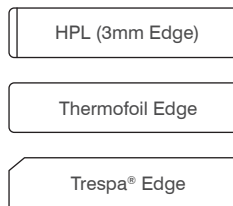
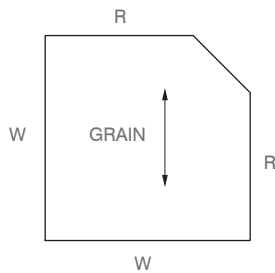
W = 30, 33, 38" [ ]

R = 22, 25, 30" ^

T = 1-1/8"

Corner curved worktop available in HPL, Thermofoil, and Trespa®

## 0\*CAT ( 1-1/8" Worktop )



### Standard Sizes

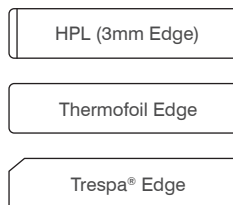
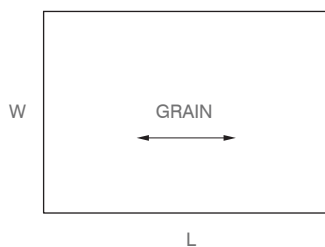
W = 30, 33, 38" [ ]

R = 22, 25, 30" ^

T = 1-1/8"

Corner angled worktop available in HPL, Thermofoil, and Trespa®

## 0\*PNL ( 1-1/8" Worktop, Backsplash, Sidesplash )



### Standard Sizes

W = 04, 13, 16, 19, 22, 25, 30" [ ]

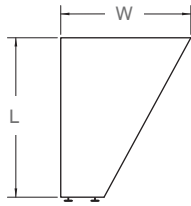
L = 12" - 96" ^

T = 1-1/8"

Panel worktop available in HPL, Thermofoil, and Trespa® finishes

# support panels

## OHATS



### Standard Sizes

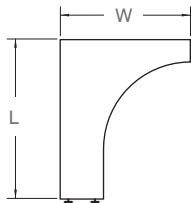
W = 10, 13, 16, 19, 22, 25" [ ]

L = 29, 33, 35" ^

T = 3/4, 1-1/8"

Angled top support

## OHCTS



### Standard Sizes

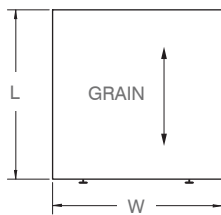
W = 10, 13, 16, 19, 22, 25" [ ]

L = 29, 33, 35" ^

T = 3/4, 1-1/8"

Curved top support

## OHPLV



### Standard Sizes

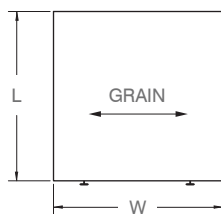
W = 12" - 48" [ ]

L = 29, 33, 35" ^

T = 3/4, 1-1/8"

Panel with levelers,  
vertical grain

## OHPLH



### Standard Sizes

W = 48" - 96" [ ]

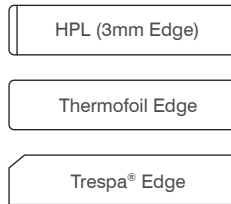
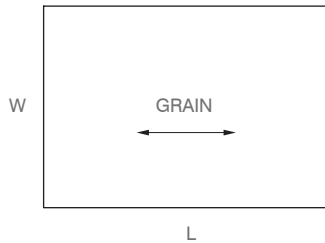
L = 29, 33, 35, 48" ^

T = 3/4, 1-1/8"

Panel with levelers,  
horizontal grain

# panels multi-use

## 0\*PNL ( 1-1/8" Worktop, Backsplash, Sidesplash )



### Standard Sizes

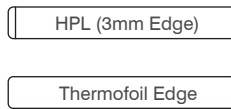
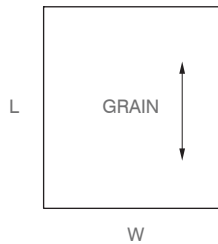
W = 04, 13, 16, 19, 22, 25, 30" [ ]

L = 12" - 96" ^

T = 1-1/8"

Panel worktop available in HPL, Thermofoil, and Trespa® finishes

## 0\*PNL ( 3/4" Filler, Soffit, Overlay Finished End)



### Standard Sizes

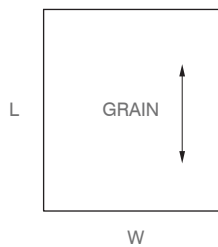
W = 04, 13, 16, 19, 22, 25, 30" [ ]

L = 29, 33, 35" ^

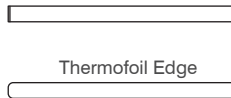
T = 3/4"

Panel worktop available in HPL and Thermofoil finishes

## 0\*IFE ( 3/8" Inset Finished End )



HPL (0.5mm Edge - Black Only)



### Standard Sizes

W = 12, 15, 18, 21, 24, 29" [ ]

L = 12" - 96" ^

T = 3/8"

Inset finished end available in HPL and Thermofoil finishes





# applying finishes to cabinets

## Applying Finishes

There are a few things to point out before you start applying finishes to your cabinets. The diagram below shows what finishes are available for specific parts of our cabinets.

*Look for these icons on the following pages to guide your application of finishes.*

### body & hardware finishes:

- pc steel / black hardware
- pc steel / nickel hardware
- stainless steel / nickel hardware

### toekick finishes:

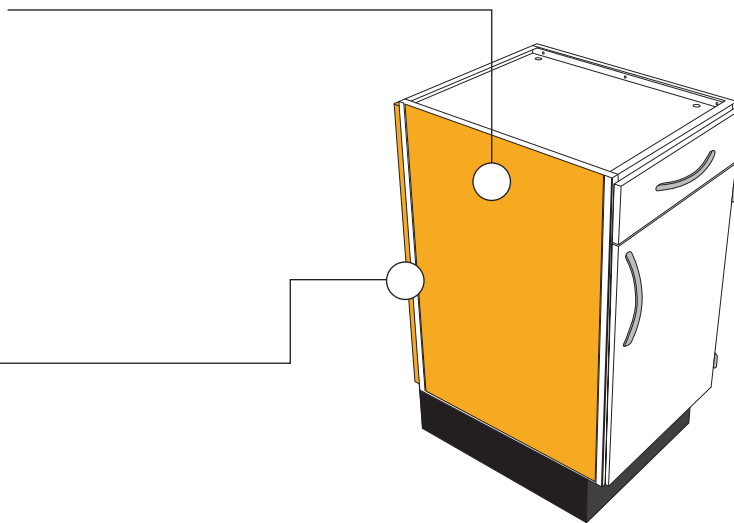
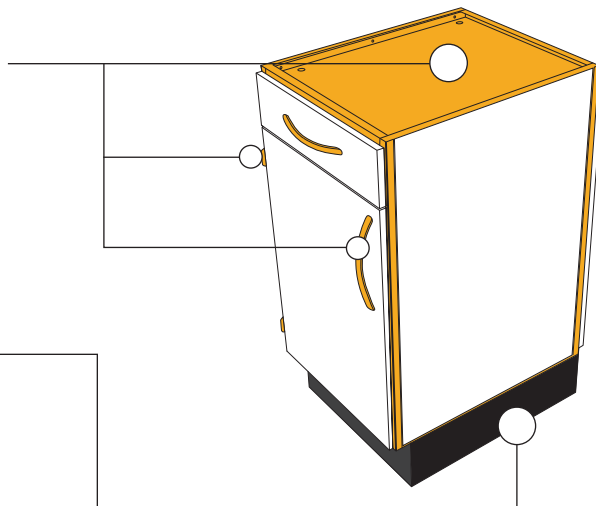
- black pc steel
- stainless steel

### inset finished end:

- thermofoil
- hpl
- pc steel
- stainless steel

### outside panel:

- thermofoil
- hpl



# applying finishes to cabinets

## drawer finishes:

- thermofoil (*grey back side*)
- hpl
- framed (*see below*)

## door finishes:

- thermofoil (*grey back side*)
- hpl
- framed door – additional options:

### frame:

- aluminum with stainless steel finish /  
nickel hardware

### insert:

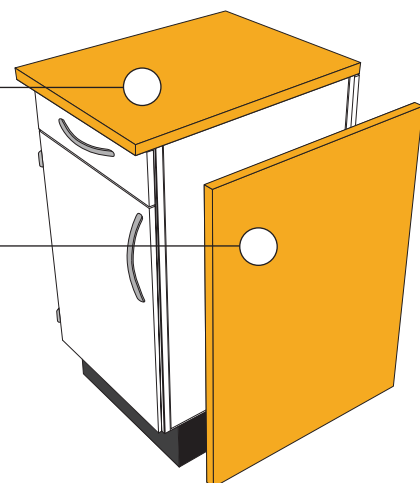
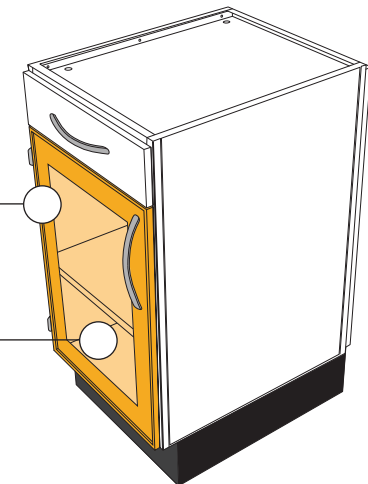
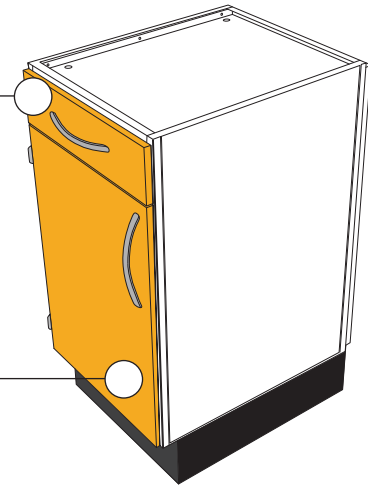
- acrylic | aluminum with s.s. finish

## worktop finishes:

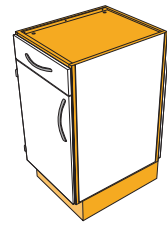
- thermofoil (*black underside*)
- hpl
- trespa®

## overlay finished end:

- thermofoil
- hpl



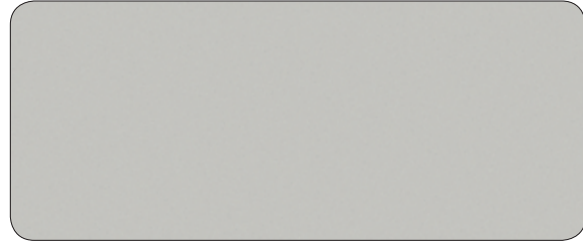
# steel finishes



## Cabinet Body Options



\*P0001 BLACK



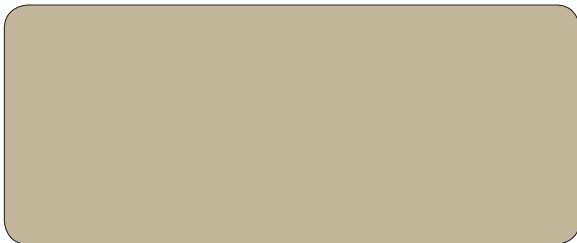
\*P0002 NICKEL



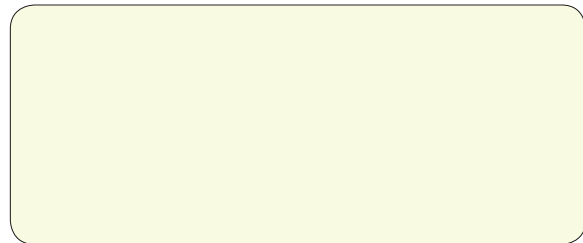
P0003 FROST



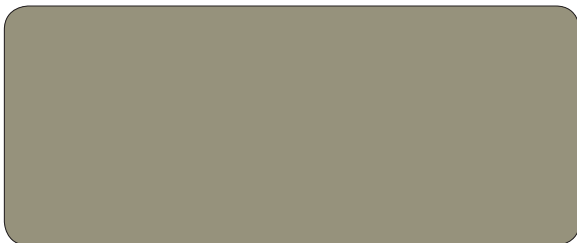
P0004 COTTONWOOD



P0005 WARM BROWN



\*P0006 FURNITURE WHITE



P0007 DESIGNER GRAY



S0001 STAINLESS STEEL

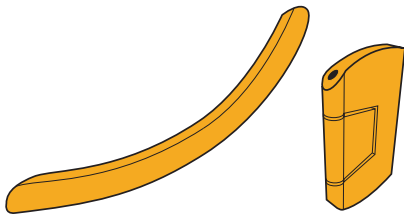
## Toekick Options



P0001 BLACK



S0001 STAINLESS STEEL

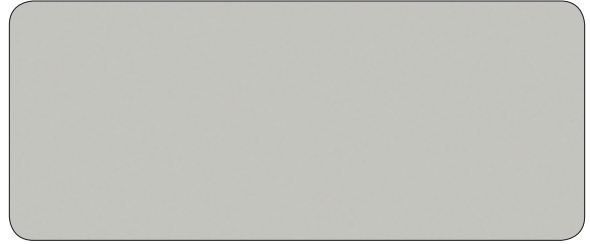


# hardware finishes

---

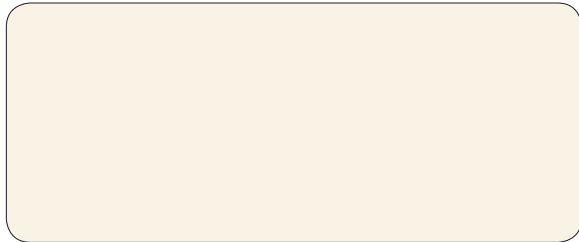


BLACK



NICKEL

# thermofoil finishes



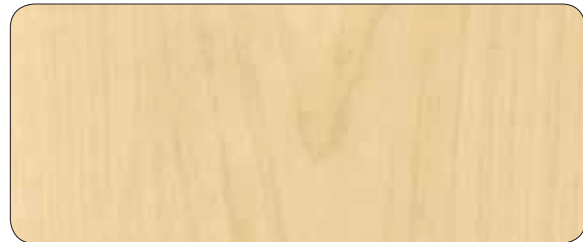
T0001 WARM WHITE (HPL MATCH H0001)



T0002 CASHMERE FIBER (HPL COMPLIMENT H0002)



T0003 FIBERS CONCRETE (HPL COMPLIMENT H0003)



T0004 FUSION MAPLE (HPL MATCH H0004)



T0005 SASHA CHERRY (HPL MATCH H0005)



T0006 OLYMPIA APPLE (HPL MATCH H0006)



T0007 SHAKER CHERRY (HPL MATCH H0007)



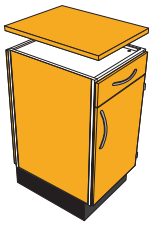
T0008 CAMBY CHERRY (HPL MATCH H0008)



T0009 CROSSFIRE JAVA (HPL MATCH H0009)

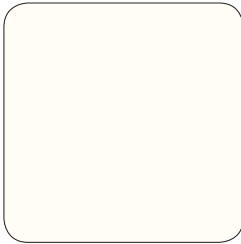


T0010 CLOVE (HPL MATCH H0010)



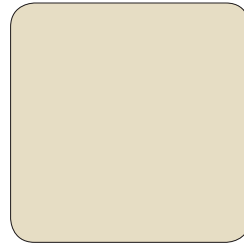
# hpl finishes

( FOIL MATCH T0001 )



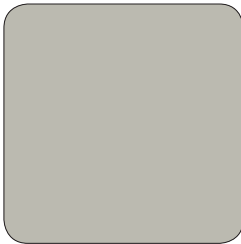
**H0001 ANTIQUE WHITE**

( FOIL COMP. T0002 )



**H0002 BEIGE**

( FOIL COMP. T0003 )



**H0003 DOVE GREY**

( FOIL MATCH T0004 )



**H0004 FUSION MAPLE**

( FOIL MATCH T0005 )



**H0005 BRAZILWOOD**

( FOIL MATCH T0006 )



**H0006 WILD CHERRY**

( FOIL MATCH T0007 )



**H0007 SHAKER CHERRY**

( FOIL MATCH T0008 )



**H0008 BILTMORE CHERRY**

( FOIL MATCH T0009 )



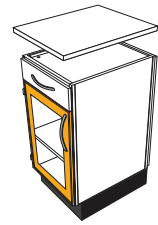
**H0009 VERSAILLES ANIGRE**

( FOIL MATCH T0010 )



**H0010 EMPIRE MAHOGANY**

# framed door finishes



## Framed Doors & Drawers

With the day-to-day abuse cabinet doors receive in the work place, it is not surprising to find so many mis-aligned doors and faulty hinges.

( ALUMINUM )



STAINLESS STEEL FINISH

Our casework is top notch from the ground up – including the doors. We start with high-grade aluminum extrusions for strength, precision ground corners for an accurate fit, and semi-rigid retainers to ensure close tolerances between the frame and panel inserts. All of this ensures a door that will last for years in your demanding environment.



### Noteworthy:

- Rigid, aluminum door frame
- Semi-rigid retainers to dampen sound and ensure close fit between frame and panel inserts
- Multiple panel inserts and finish options available

### Door and drawer frames are available in:

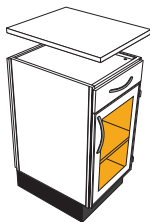
- Aluminum with stainless steel finish

- **Panel inserts are available in:**

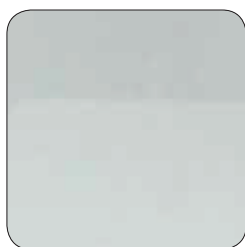
acrylic: clear | satin | black | satin silver

aluminum: with brushed stainless steel finish





# framed door panel options



( ACRYLIC )

**F0001 SATIN**



( ACRYLIC )

**F0103 CLEAR**



( ACRYLIC )

**F0100 SATIN SILVER**



( ACRYLIC )

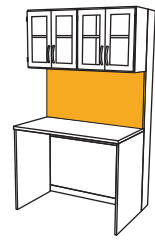
**F0101 BLACK**



( ALUMINUM )

**F0102 ALUMINUM / S.S. FINISH**

# fabric colors

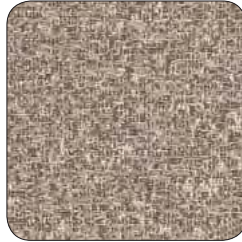


\* ( HERE AND NOW )



C0001 ASH

\* ( HERE AND NOW )



C0002 EARTH

\* ( HERE AND NOW )



C0003 FROST

\* ( HERE AND NOW )



C0004 LICHEN

\* ( HERE AND NOW )



C0005 PEBBLE

\* ( HERE AND NOW )



C0006 WATER

\* ( INFINITY CREPE )



C0007 EBONY

\* ( INFINITY CREPE )



C0008 FOREST

\* ( INFINITY CREPE )



C0009 KHAKI

\* ( INFINITY CREPE )



C0010 LICHEN

\* ( INFINITY CREPE )



C0011 ROYAL

\* ( INFINITY CREPE )



C0012 SANDSTONE

( LILY PAD )



C0013 ALOE

( LILY PAD )

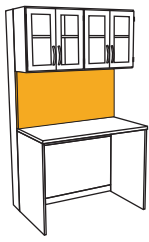


C0014 CARBON

( LILY PAD )



C0015 CEMENT



# fabric colors

( LILY PAD )



**C0016 INK**

( LILY PAD )



**C0017 LATTE**

( LILY PAD )



**C0018 PISTACHIO**

( LILY PAD )



**C0019 SQUASH**

( NETWORK )



**C0020 CELERY**

( NETWORK )



**C0021 HARBOR**

( NETWORK )



**C0022 HICKORY**

( NETWORK )



**C0023 HORIZON**

( NETWORK )



**C0024 PUTTY**

( NETWORK )



**C0025 SAPPHIRE**

( NETWORK )



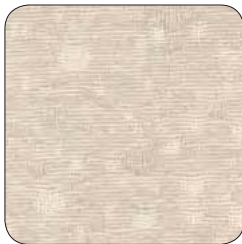
**C0026 SUNBEAM**

( NITRO )



**C0027 ALE**

( NITRO )



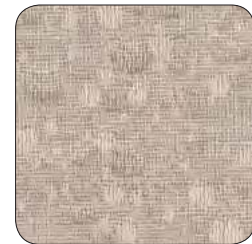
**C0028 CREAM SODA**

( NITRO )



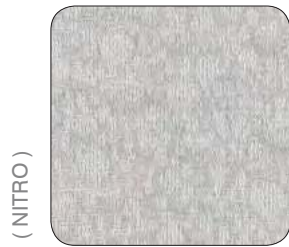
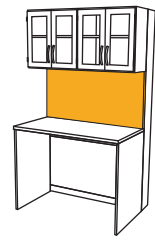
**C0029 CRYSTAL**

( NITRO )



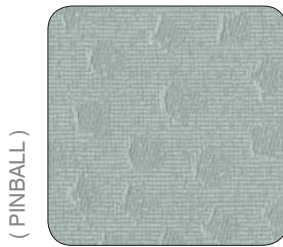
**C0030 ROOTBEER**

# fabric colors



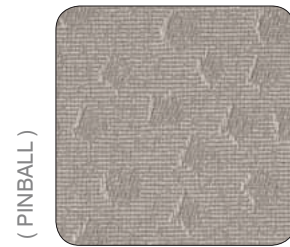
(NITRO)

**C0031 TONIC**



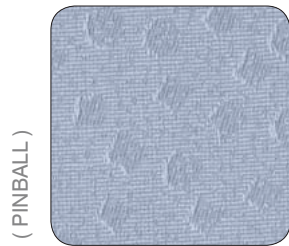
(PINBALL)

**C0032 BLUEGRASS**



(PINBALL)

**C0033 CEMENT**



(PINBALL)

**C0034 VAPOR**



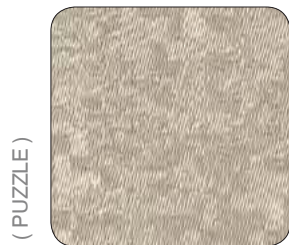
(PUZZLE)

**C0035 CANYON**



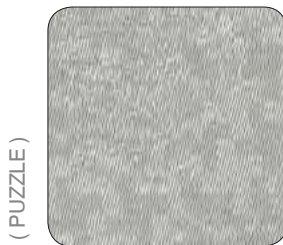
(PUZZLE)

**C0036 CAVE**



(PUZZLE)

**C0037 MEADOW**



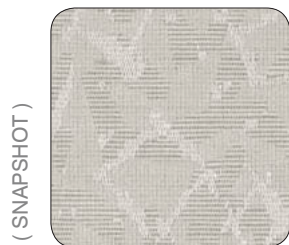
(PUZZLE)

**C0038 SKY**



(SNAPSHOT)

**C0041 CHESTNUT**



(SNAPSHOT)

**C0039 MIST**



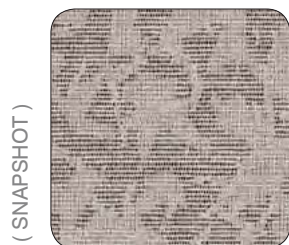
(SNAPSHOT)

**C0040 RUM**



(SNAPSHOT)

**C0042 STARLIGHT**



(SNAPSHOT)

**C0043 STEEL**



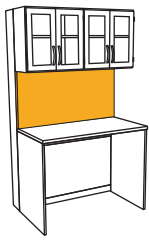
(SPINEL)

**C0044 EMERY**

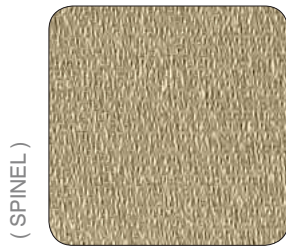


(SPINEL)

**C0045 GULDEN**



# fabric colors



( SPINEL )

**C0046 PERIDOT**



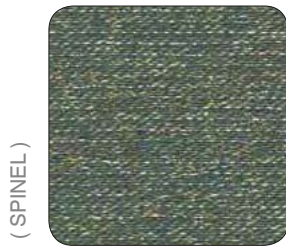
( SPINEL )

**C0047 OBSIDIAN**



( SPINEL )

**C0048 TIGER EYE**



( SPINEL )

**C0049 TOURMALINE**



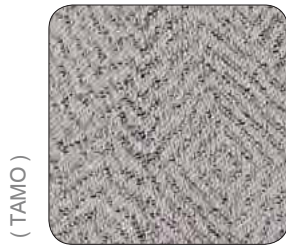
( SPINEL )

**C0050 SANDSTONE**



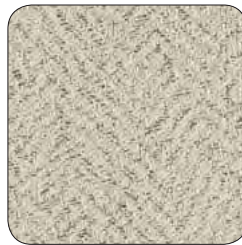
( SPINEL )

**C0051 SMOKEY QUARTZ**



( TAMO )

**C0052 ASH**



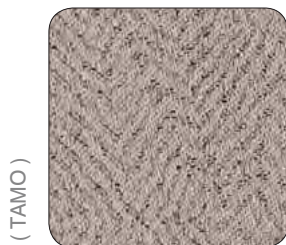
( TAMO )

**C0053 BAMBOO**



( TAMO )

**C0054 BARLEY**



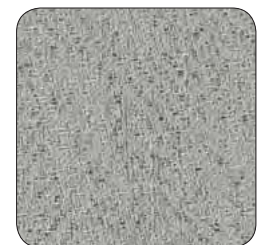
( TAMO )

**C0055 CAPPUCCINO**



( TAMO )

**C0056 GLACIER**



( TAMO )

**C0057 GRAVEL**



( TAMO )

**C0058 SQUASH**



( ZIRCONIA )

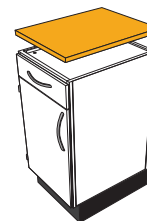
**C0059 OBSIDIAN**



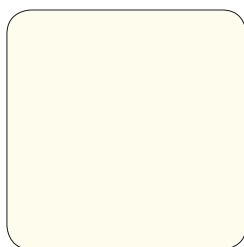
( ZIRCONIA )

**C0060 SAPPHIRE**

# trespa<sup>®</sup> toplab colors



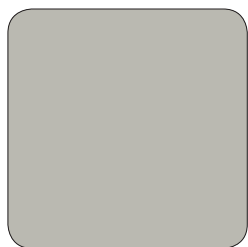
R0001



R0002



R0003



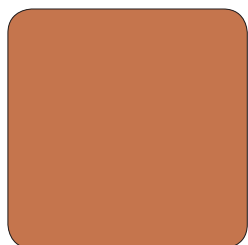
R0004



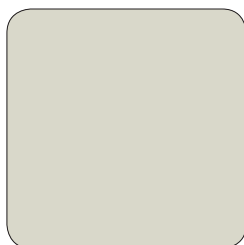
R0005



R0006



R0007



R0008



R0009



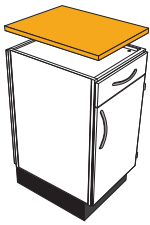
R0050



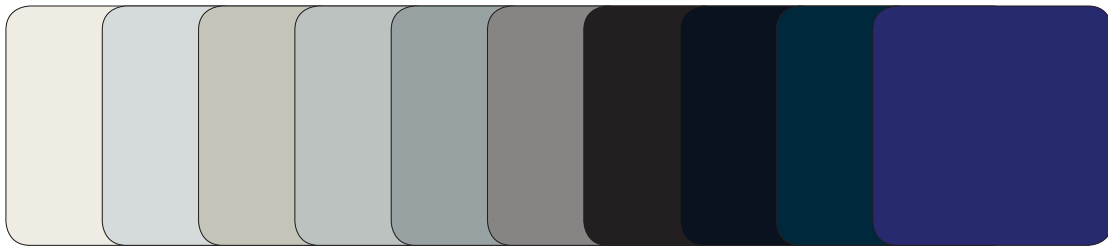
R0051



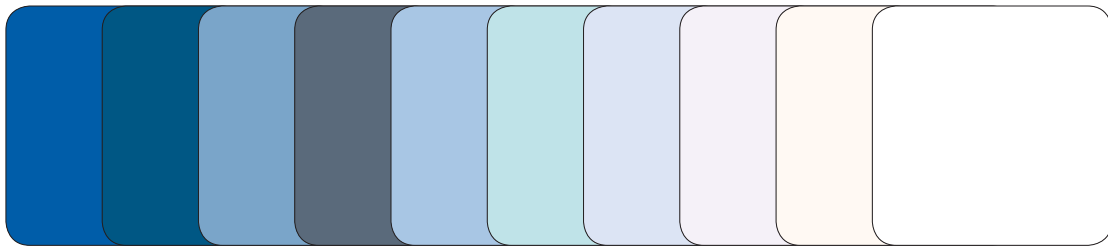
R0052



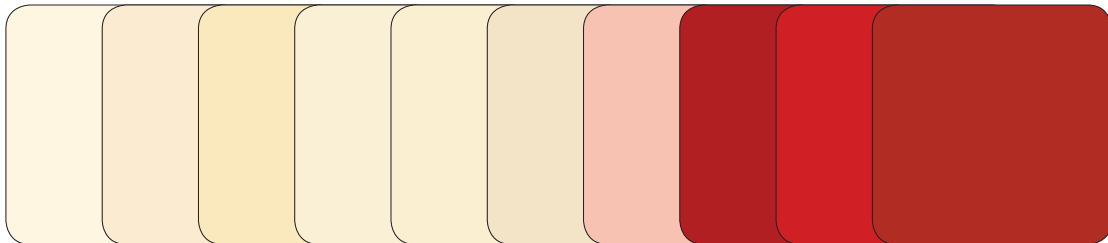
# trespa® athlon colors



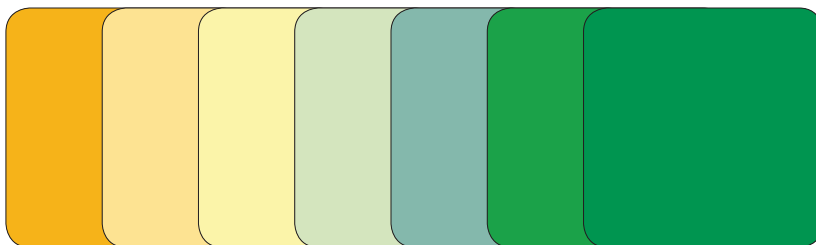
R0100 R0101 R0102 R0103 R0104 R0105 R0106 R0107 R0108 R0109



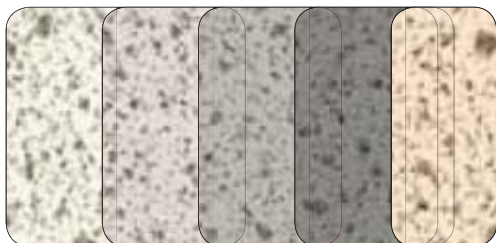
R0110 R0111 R0112 R0113 R0114 R0115 R0116 R0117 R0118 R0119



R0120 R0121 R0122 R0123 R0124 R0125 R0126 R0127 R0128 R0129



R0130 R0131 R0132 R0133 R0134 R0135 R0136



R0200 R0201 R0202 R0203 R0204

