

# FlexConsoles



**SOUTHWESTSOLUTIONSGROUP**

[www.SouthwestSolutions.com](http://www.SouthwestSolutions.com) | [info@southwestsolutions.com](mailto:info@southwestsolutions.com) | 1-800-803-1083

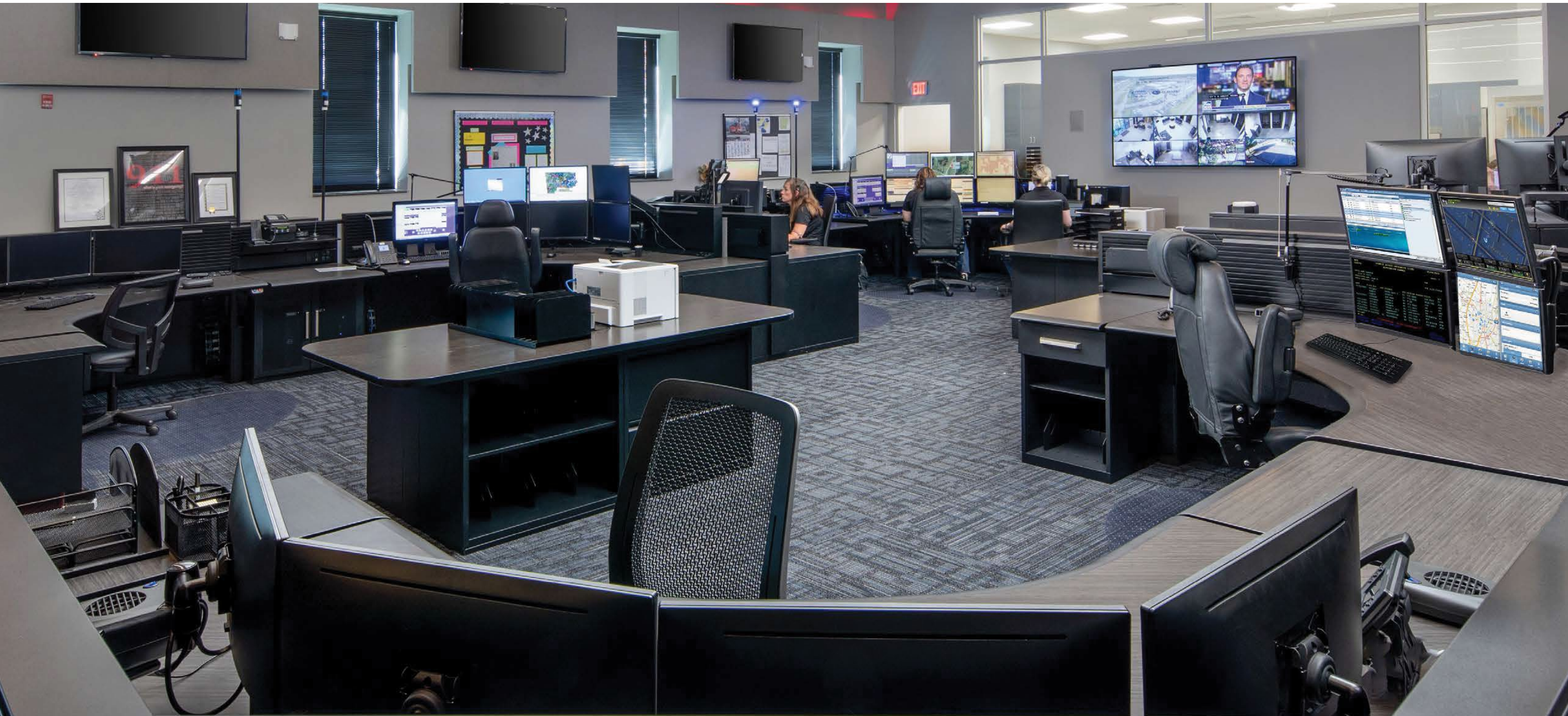


## THE FLEX ADVANTAGE

Console furniture designed to directly support your team's communication, health and engagement goals.

SOUTHWESTSOLUTIONSGROUP

Choose from a variety of shapes and sizes to create a workplace that meets your operator and technology needs, today and tomorrow.

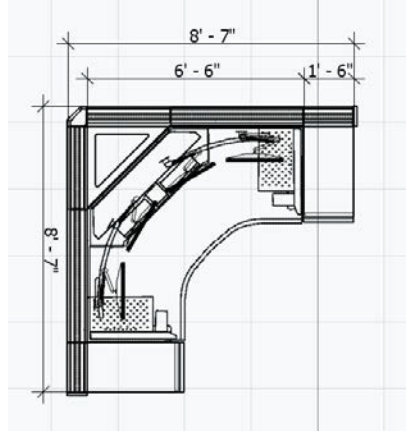




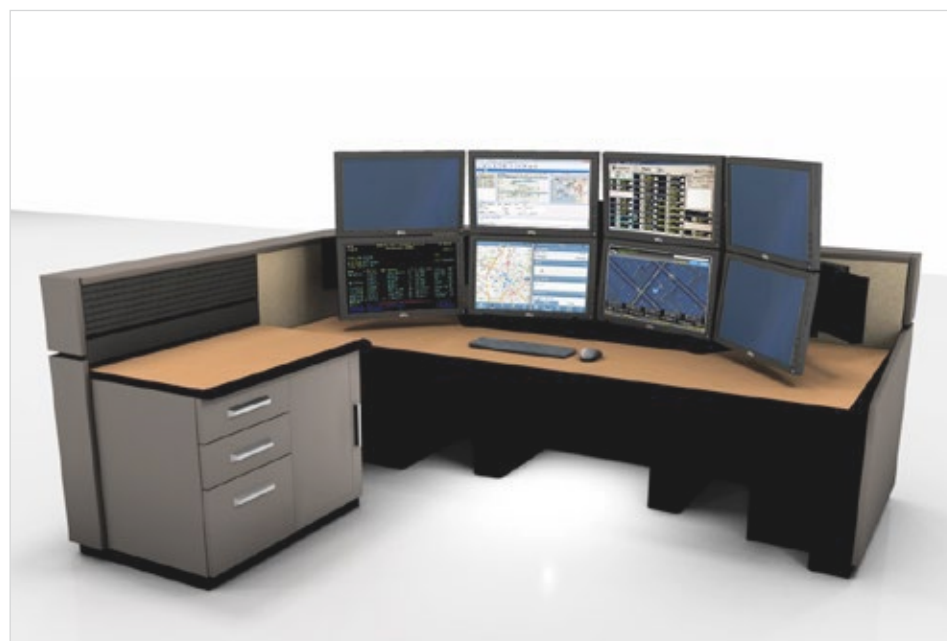
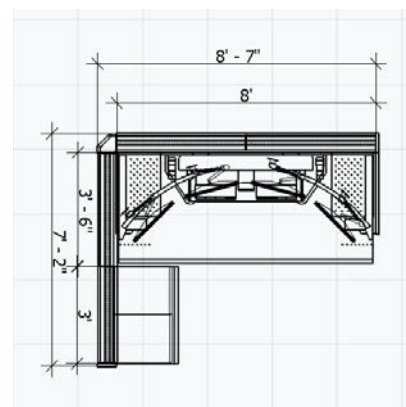
## GIVING YOU THE FREEDOM TO CHOOSE

Both corner and linear consoles consume a similar footprint which gives you the freedom to choose the style that is right for your team.

### 90° Corner Console

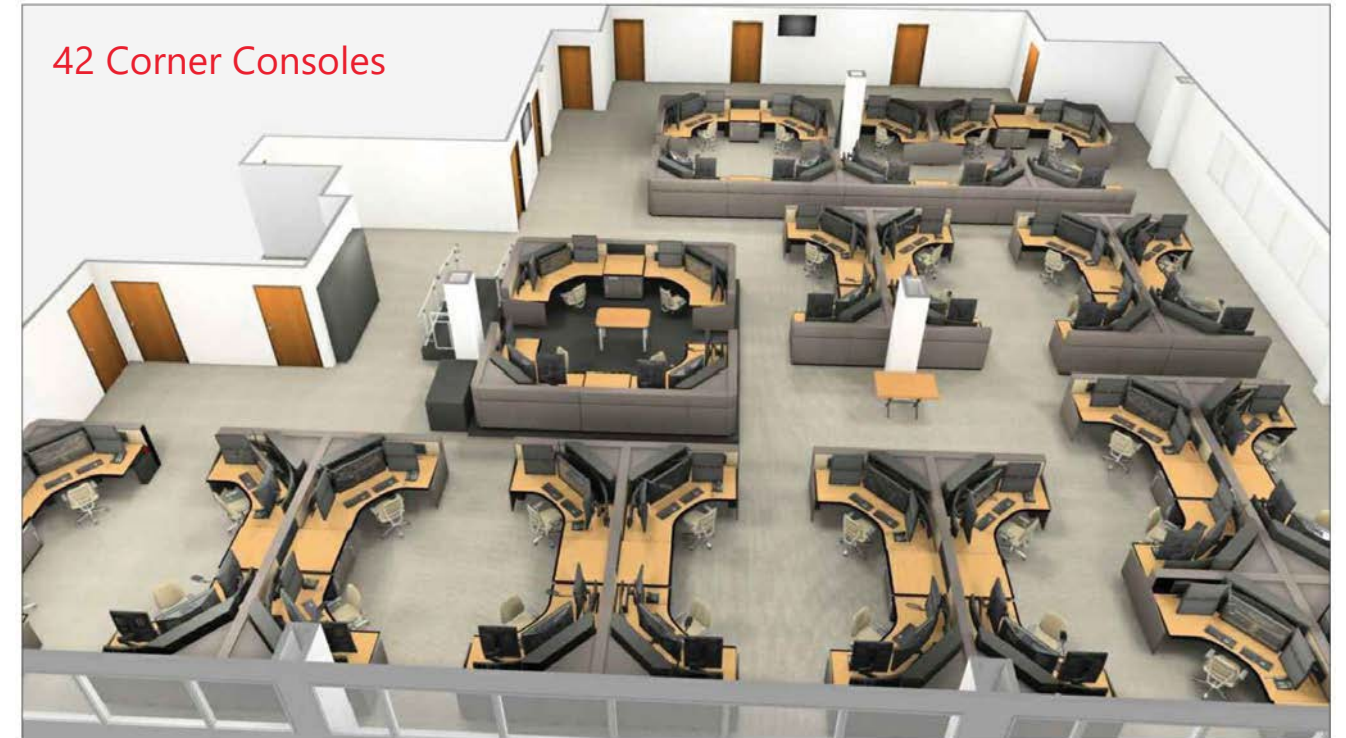


### Linear Console

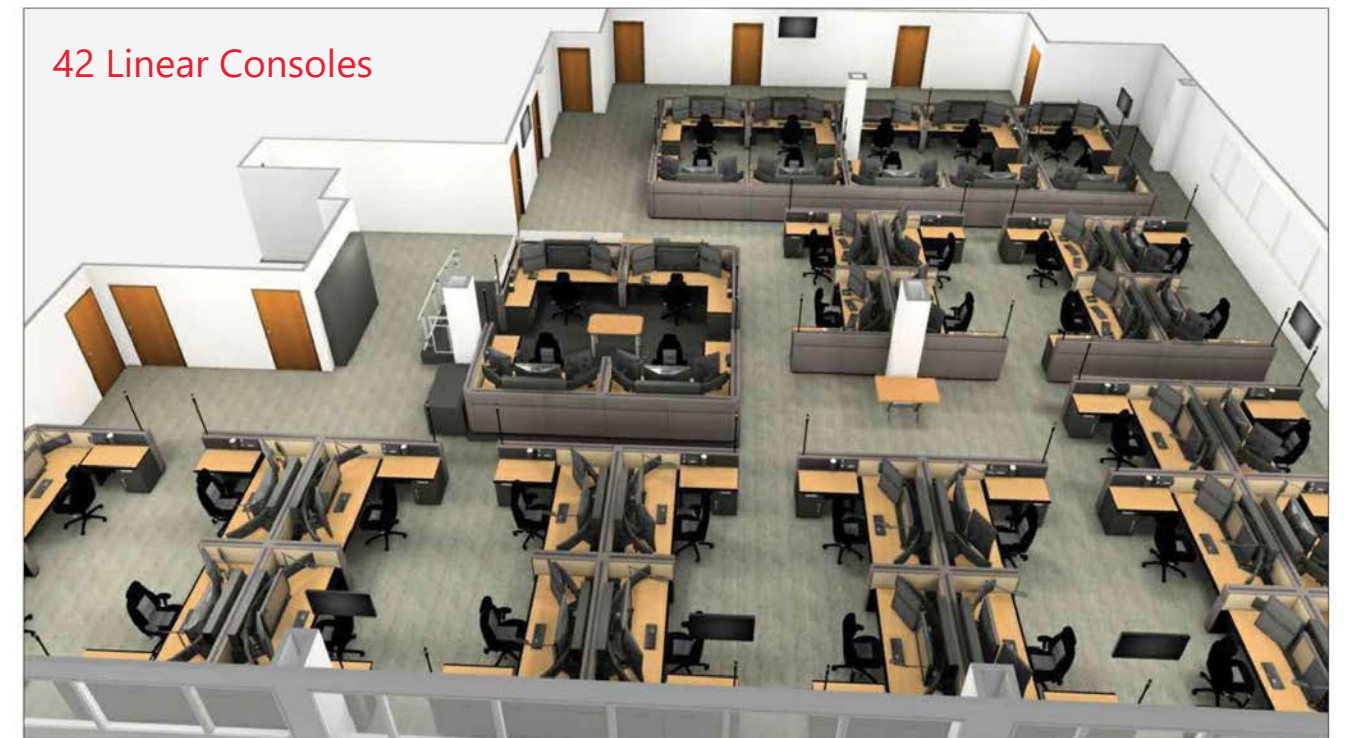


This side-by-side comparison shows 42 corner consoles and 42 linear consoles planned into the same space.

### 42 Corner Consoles



### 42 Linear Consoles



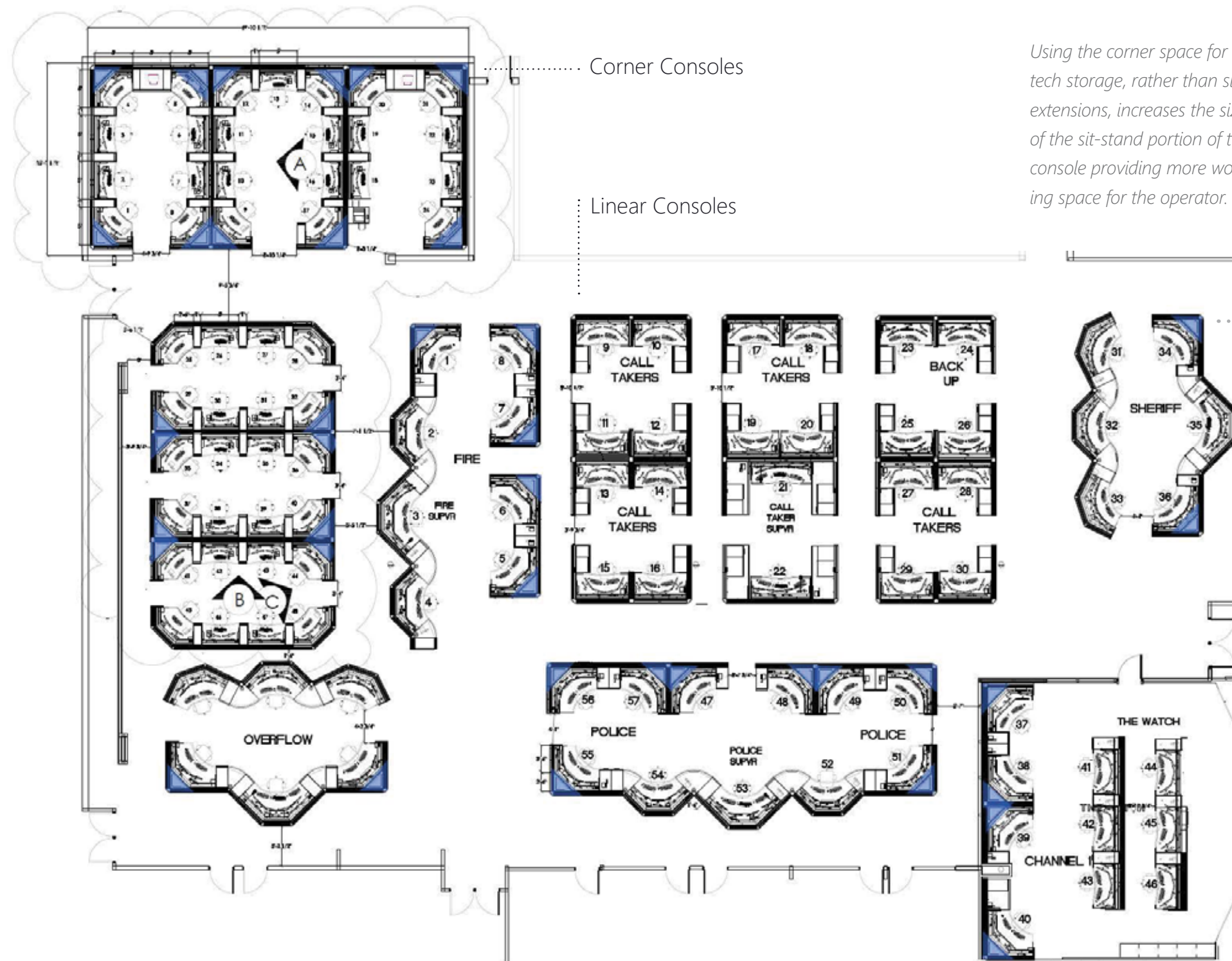


## MAXIMIZING SPACE AND WORK FLOW

For agencies with unique room architecture or dedicated response teams, consider planning with corner and linear consoles to improve use of space, traffic and communication flow.

## ZERO WASTE! SOUTHWESTSOLUTIONSGROUP

Russ Bassett 90° corner consoles make use of the back corner for technology and equipment storage. Zero wasted space means teams can choose a corner console and know they are getting a workstation that is comfortable and space efficient.



*Using the corner space for tech storage, rather than side extensions, increases the size of the sit-stand portion of the console providing more working space for the operator.*

*This consolidated agency selected a blend of console shapes and sizes to best support workflow and the varied technology requirements including the number of monitors and equipment storage.*



## SINGLE SURFACE, DUAL LIFT

Heavy duty lifting columns support a height adjustable surface. A second set of lifting columns support a height adjustable monitor array.

### Single Surface



An expansive work zone helps operators stay organized and provides plenty of room for side-by-side training.

### Ergonomic Benefits of Single Surface, Dual Lift



#### Height Adjustment

Promote musculo-skeletal health by accommodating the 95% male, the 5% female and everyone in between.

Adjusting the worksurface and monitor simultaneously or independently delivers ergonomic comfort and ease of use for the tallest or most petite team members.

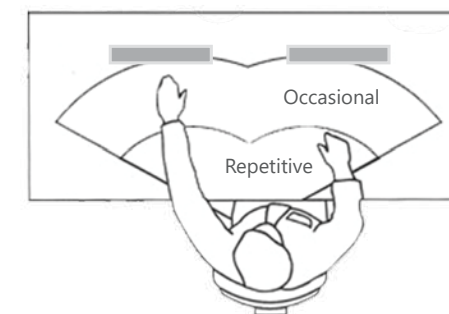
### Dual Lift



- 12" Monitor Height Adjustment
- 48.7" Standing Surface Height
- 26" Sit to Stand Range
- 22.6" Seated Surface Height

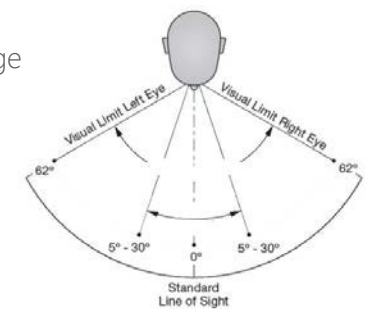
#### Reach Zones

To mitigate repetitive twisting and stretching, user controls are located within the dispatcher's primary reach zone.



#### Monitor Viewing

The curved Slatwall Monitor Array's range of height and focal depth adjustment promotes healthy viewing distance and angle, reducing eye strain and neck tension.





# USER INTERFACE

Whether your team prefers cockpit-style positioning or a more linear approach to the work surface, Flex has you covered.

## Corner

The single wrap-around surface is flanked by technology and/or personal storage.



..... SHARED FEATURES .....

- Monitor Array with 12" Monitor Height Adjustment
- Expansive Single Surface with 26" Sit to Stand Adjustment Range
- Unencumbered Knee Space

.....

## Customizable Dashboard

Located within easy reach, your console Dashboard comes with surface height and monitor height adjustment controls. You may add up to six additional cartridges.

Accessory Options:

- Dimmable Task Light
- Quick-Connect USB Ports
- Personal Comfort System Controls
- Convenience Power
- Situational Awareness Alert
- Ambient Lighting Dimmer



Both console styles share a set of features that help operators remain comfortable and attentive.

## Linear

A linear work zone allows operators to spread out and makes side-by-side training more comfortable.



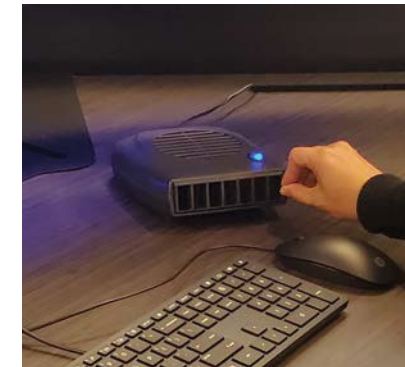
.....

- The Endure comfort edge is directly molded to the substrate for a watertight seal and ultimate durability - no marring, no curling, no peeling.
- Add optional Personal or Technical Storage Returns

..... SHARED FEATURES .....

## Universal Personal Comfort System

Cooling and heating at the console allows operators to achieve personalized comfort throughout their shift, helping reduce tension and boost focus.



The Personal Comfort System includes two (2) under-surface, tilting heaters and two (2) freestanding desktop fans with centralized Dashboard controls. All appliances are energy efficient and ultra-quiet.



# TECHNOLOGY INTEGRATION

Flex's tech integration foundation is the 7" deep, steel Technology Wall. The structure encircles the console and holds critical equipment.

## Equipment Storage

The Technology Wall, including the rear corner on 90° consoles, has ample capacity for mid-sized towers and equipment.



Optional cabinets placed alongside the console expand equipment capacity.

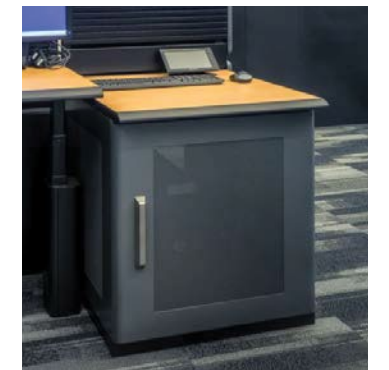
## Power, Data and Grounding

Power, data and grounding terminate within the Technology Wall.



## Additional Storage

All technology cabinets are passively cooled by design. Rear cable pass-through opens to the adjacent Technology Wall. Optional pull out shelf eases access to the back of PCs and equipment.



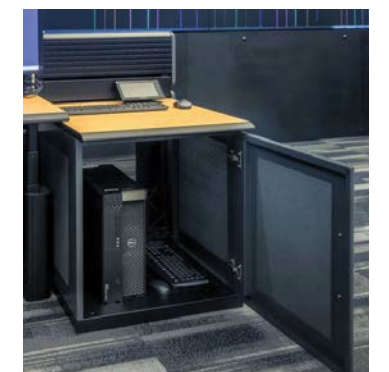
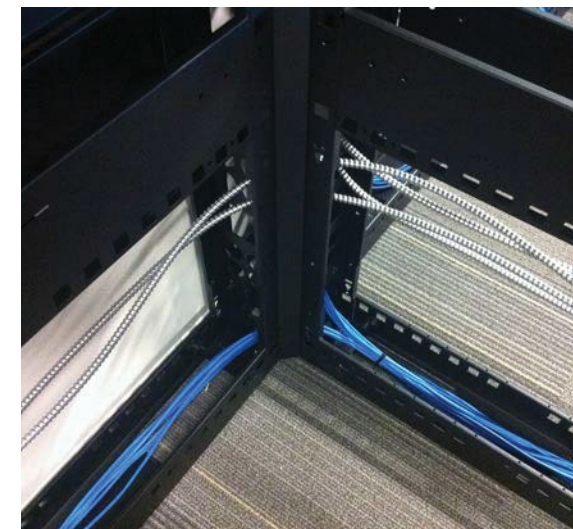
## Rack Mounting

The Technology Wall and ancillary technology storage cabinets are rack mount ready.



## Wire Management

High capacity cable chases and energy chains keep power and data cords protected from crowding and disconnection.



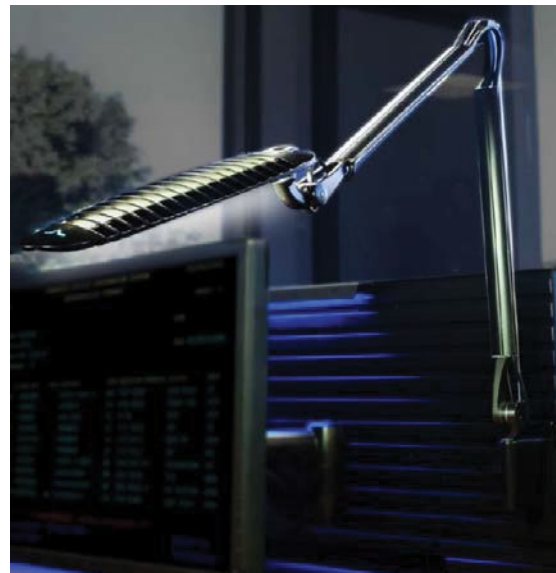


# ACCESSORIES, LIGHTING & RECOGNITION

Mission critical teams are most efficient when console workspaces are comfortable and organized.

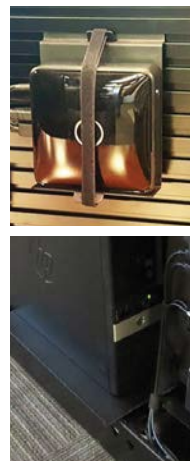
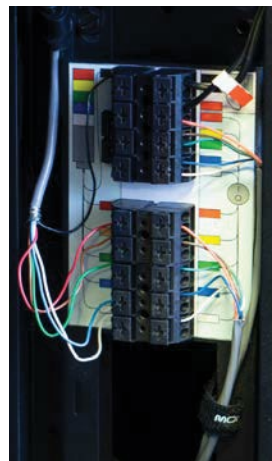
## User Amenities

Pictured clockwise are the slatwall mounted Task Light, Sanitation Station, Keyboard Taco (other Slatwall Tools available), and Situational Awareness Light with Position Sign.



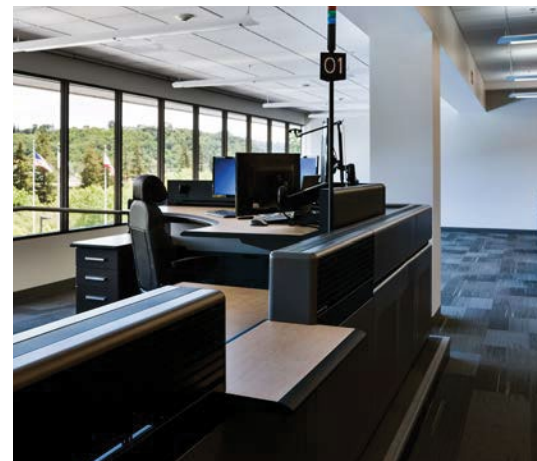
## Tech Integration

Simplify installation with the Situational Awareness Light Connection Kit, Data Termination Bracket, Micro PC Mounting Bracket, and Technology Wall PC Tray.



## Custom Solutions

Transaction counters and other unique solutions ease work flow and help teams stay connected.



## Ambient Lighting

Adjustable ambient lighting, above and below the console surface, complements conventional lighting with a calming blue tone. Blue LED lighting reduces monitor glare in ultra-bright and low light areas.



## Etched Glazing

Up-lit etched glass boosts agency pride and reinforces your agency's mission.



## Logo Panels

Logo panels add full-color badging for teams seeking additional way-finding and agency recognition.

