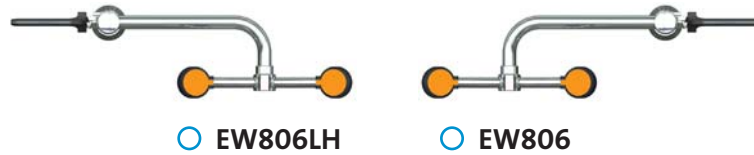


- **EW806** Eyewash, Deck Mounted 90° Swivel, Right Hand Mounting
- **EW806LH** Eyewash, Deck Mounted 90° Swivel, Left Hand Mounting



**APPLICATION:** Eyewash for mounting next to sink. Spray heads swivel 90 degrees from storage to operational position. Water flow is activated by flag handle.

**SPRAY HEAD ASSEMBLY:** Two GS-Plus™ spray heads. Each head has a “flip top” dust cover, internal flow control and filter to remove impurities from the water flow.

**VALVE:** 1/2" IPS chrome plated brass stay-open ball valve. Valve is US-made with chrome plated brass ball and TFE seals.

**MOUNTING:** Unit may be mounted on right side (EW806) or left side (EW806LH) of sink. Furnished with locknut and washer for securing unit to countertop.

**CONSTRUCTION:** Polished chrome plated brass.

**SUPPLY:** 1/2" NPT male inlet.

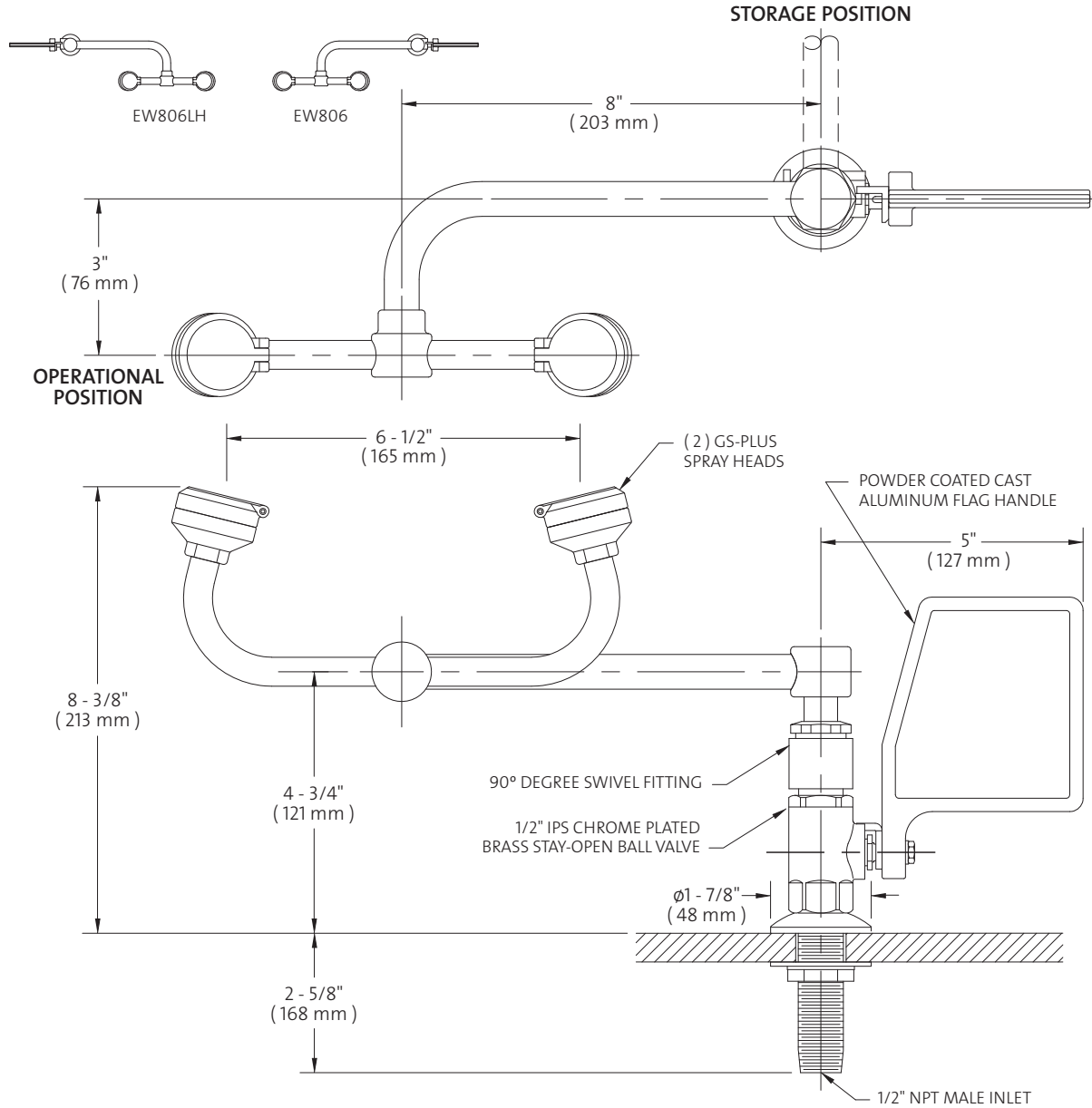
**SIGN:** ANSI-compliant identification sign.

**QUALITY ASSURANCE:** Unit is completely assembled and water tested prior to shipment.

#### Available Options

- **TMV** AP3600 thermostatic mixing valve precisely blends hot and cold water to deliver tepid water as required by ANSI Z358.1-2009. Refer to “Tempering Units” section for complete technical and product selection information.

- **EW806** Eyewash, Deck Mounted 90° Swivel, Right Hand Mounting
- **EW806LH** Eyewash, Deck Mounted 90° Swivel, Left Hand Mounting



**NOTES:**

1. EACH GS-PLUS SPRAY HEAD HAS A "FLIP-TOP" DUST COVER, INTERNAL FLOW CONTROL AND FILTER TO REMOVE IMPURITIES FROM THE WATER FLOW.
2. PROVIDE 7/8" (22 mm) DIA. MOUNTING HOLE IN DECK OR COUNTERTOP.

THIS SPACE FOR ARCHITECT/ENGINEER APPROVAL

Due to continuing product improvement, the information contained in this document is subject to change without notice. All dimensions are ± 1/4" (6mm).

ETL Listed 101496.  
 Units have been tested  
 to and comply with  
 ANSI Z358.1 - 2009



Sign Included

